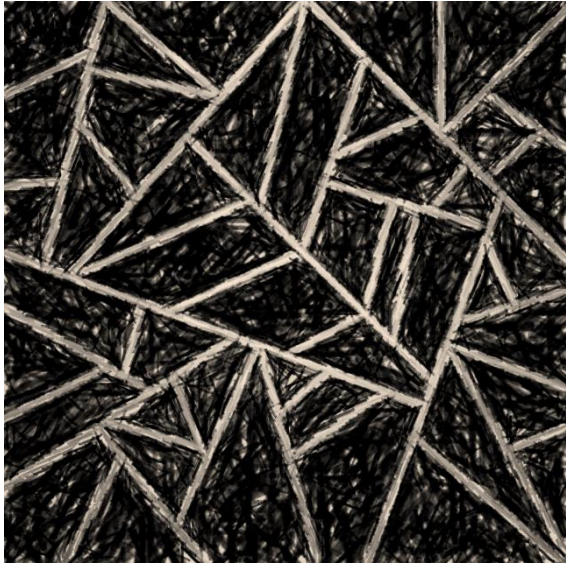


SLIDE PRESENTATION 1

HARBOR POINT

ASHLEY BACZKOWSKI



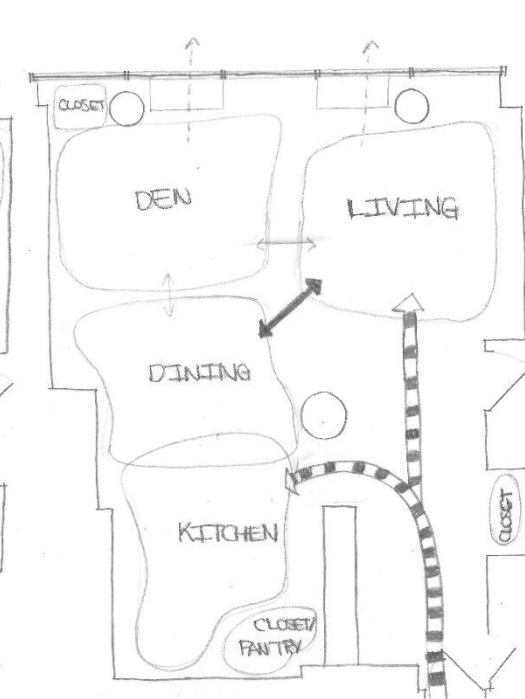
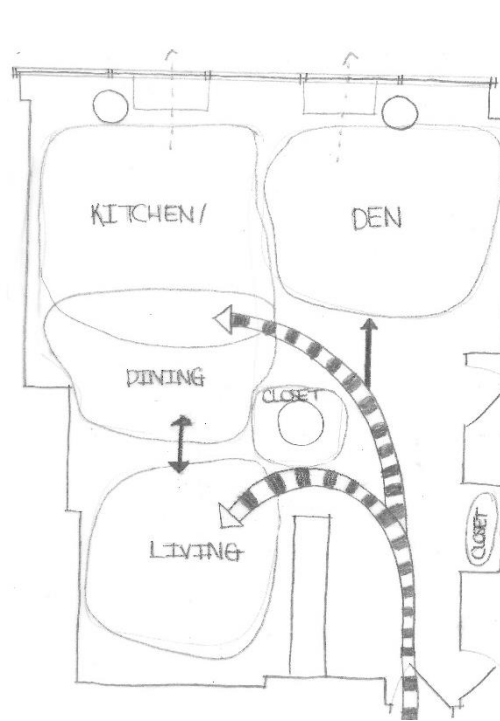
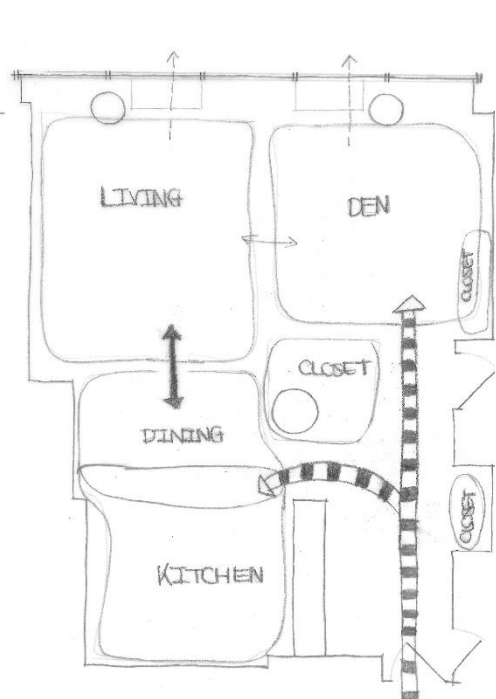
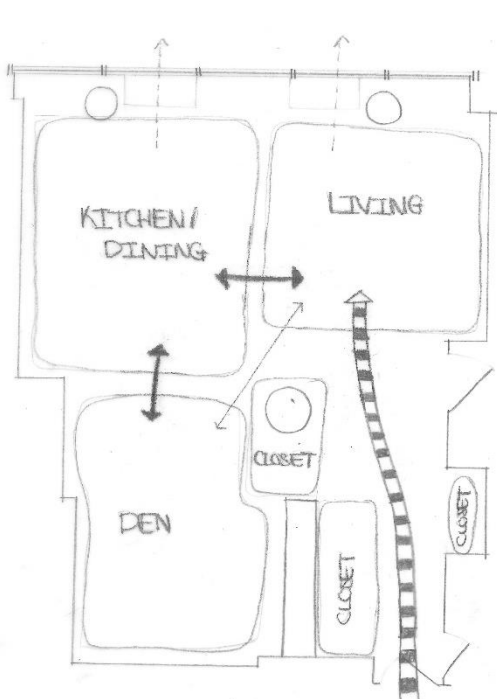
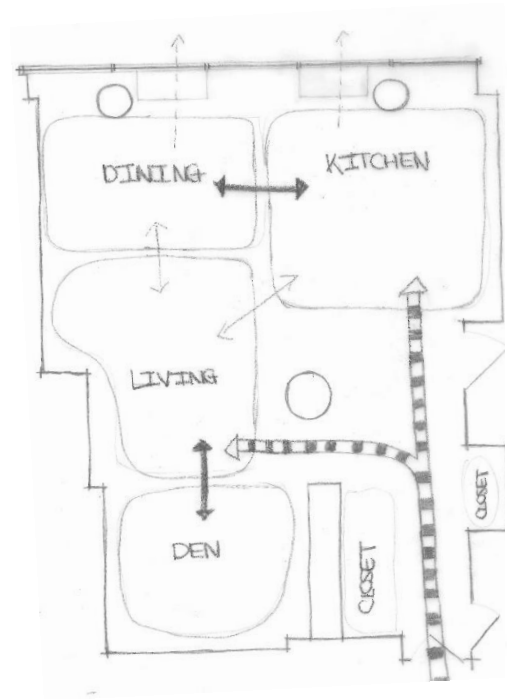
#1

#2

#3

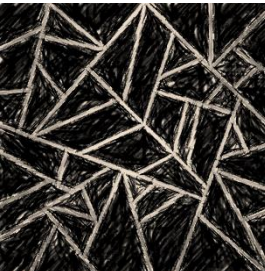
#4

#5



-  VIEW
-  MINOR TRAFFIC
-  INTERMEDIATE TRAFFIC
-  HEAVY TRAFFIC

5 BUBBLE DIAGRAMS



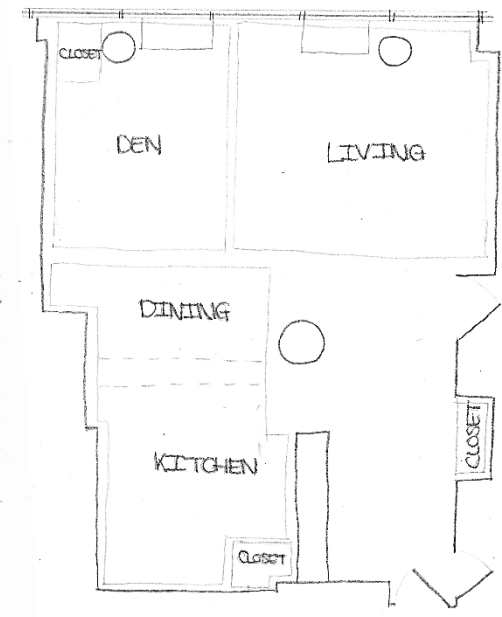
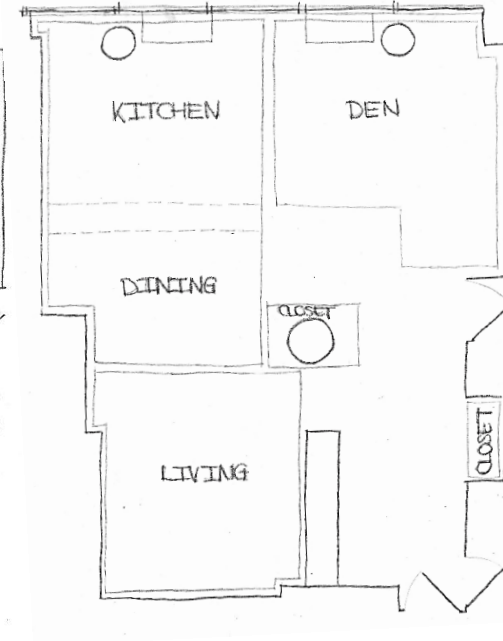
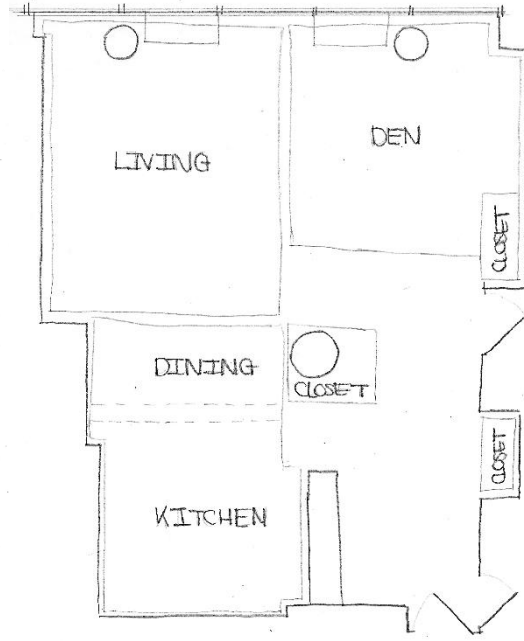
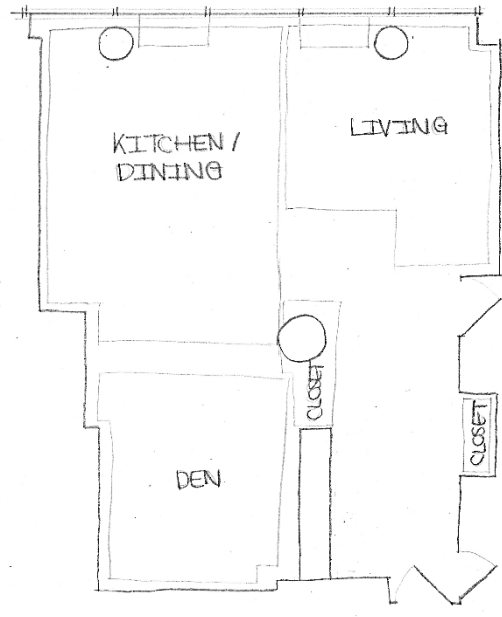
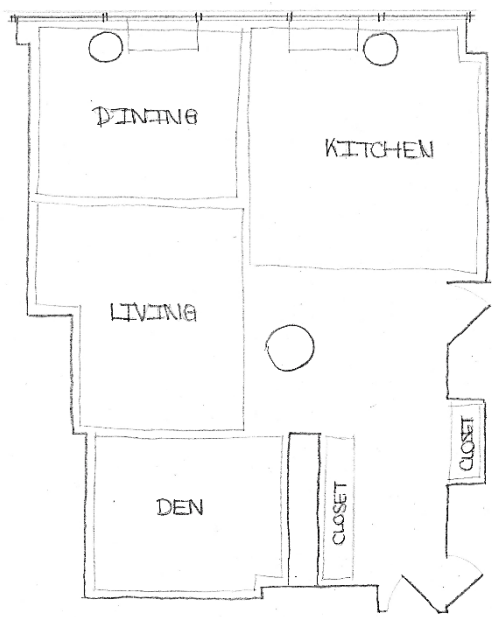
#1

#2

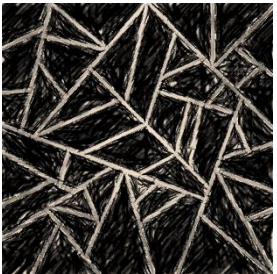
#3

#4

#5



5 BLOCK DIAGRAMS



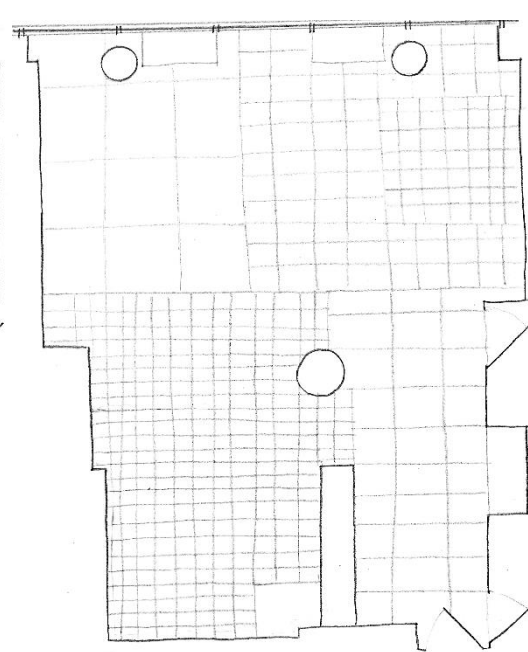
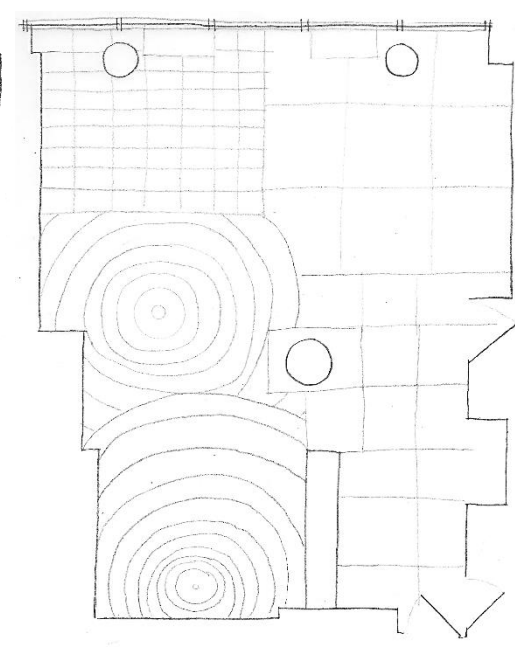
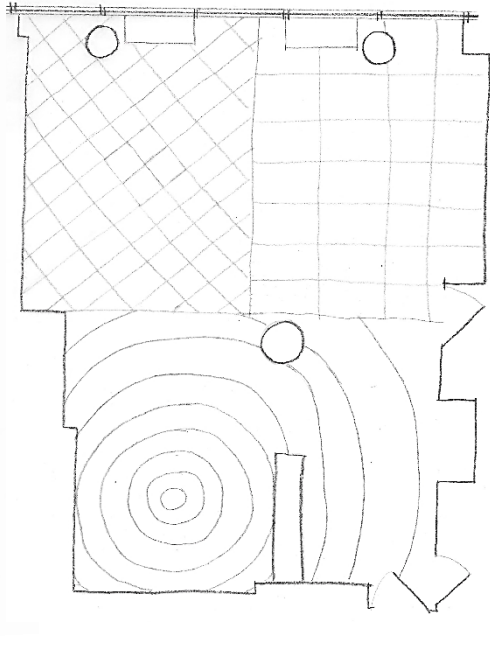
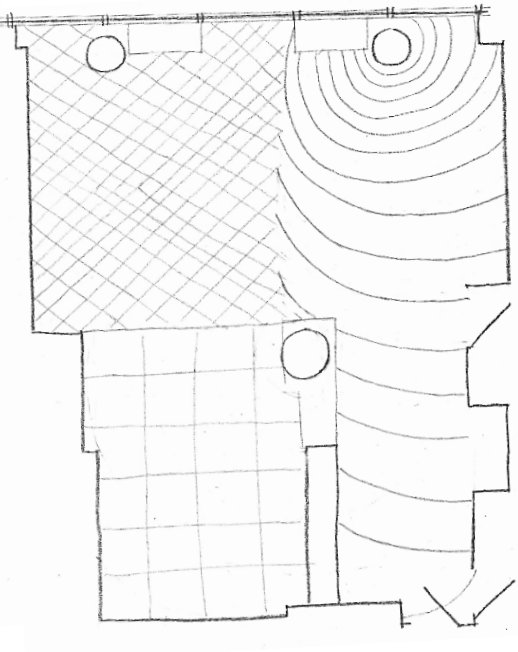
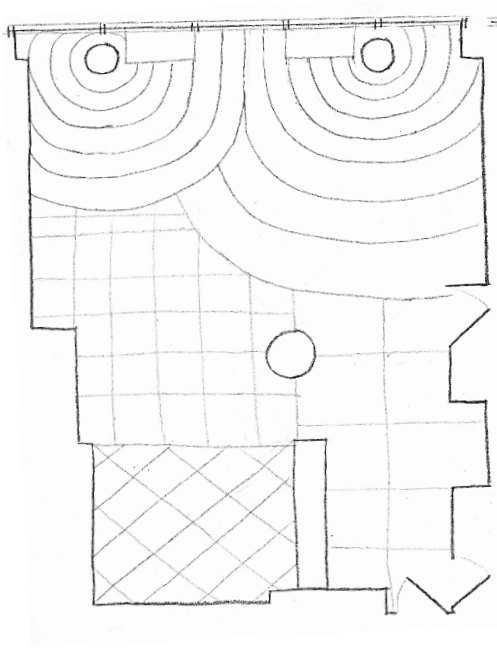
#1

#2

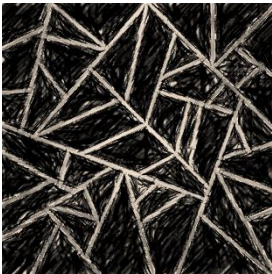
#3

#4

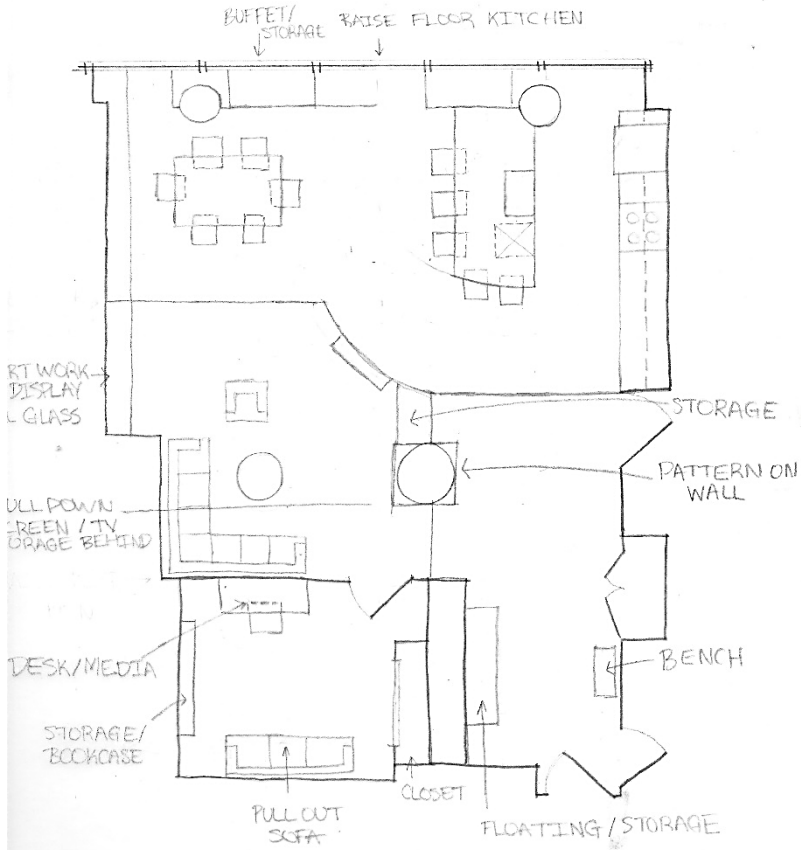
#5



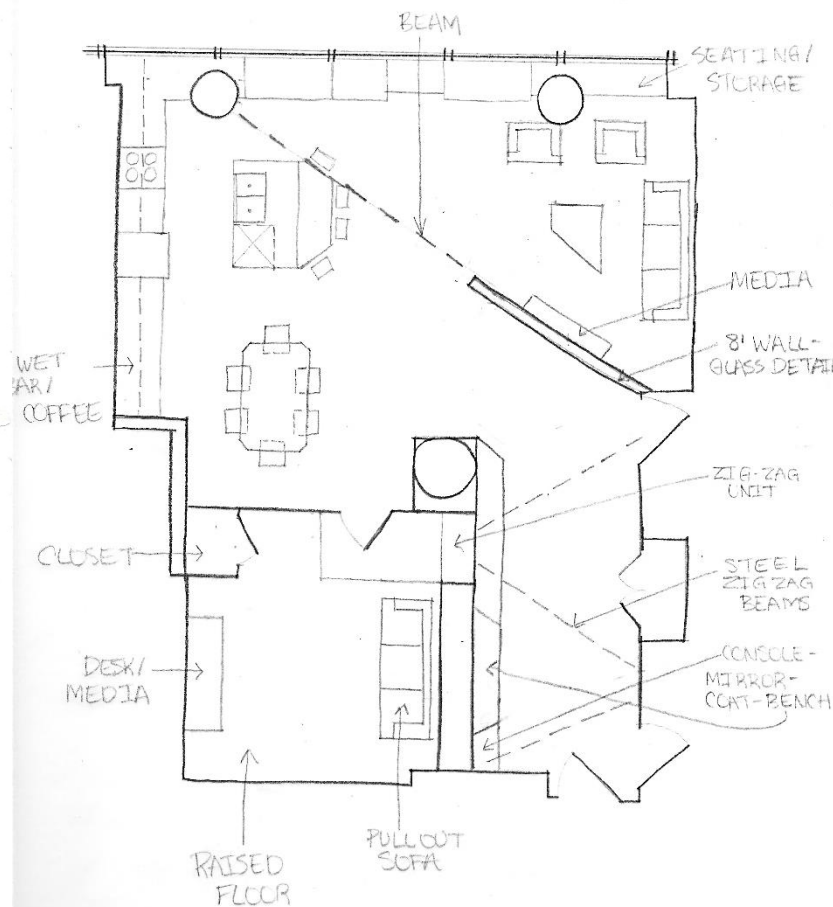
5 GRID DIAGRAMS



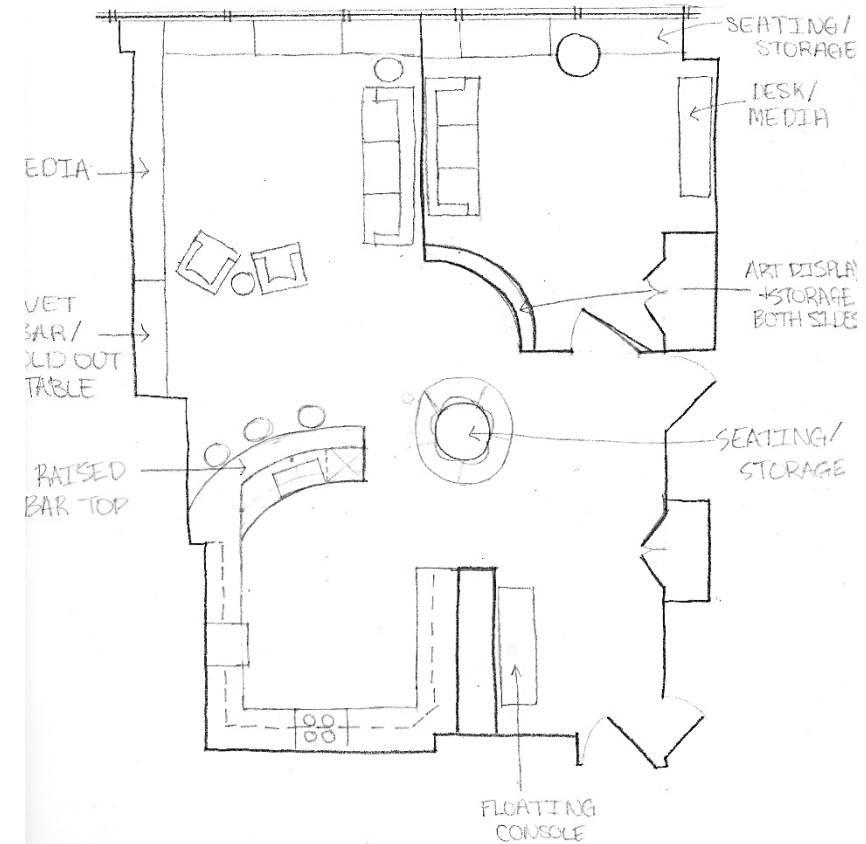
#1



#2



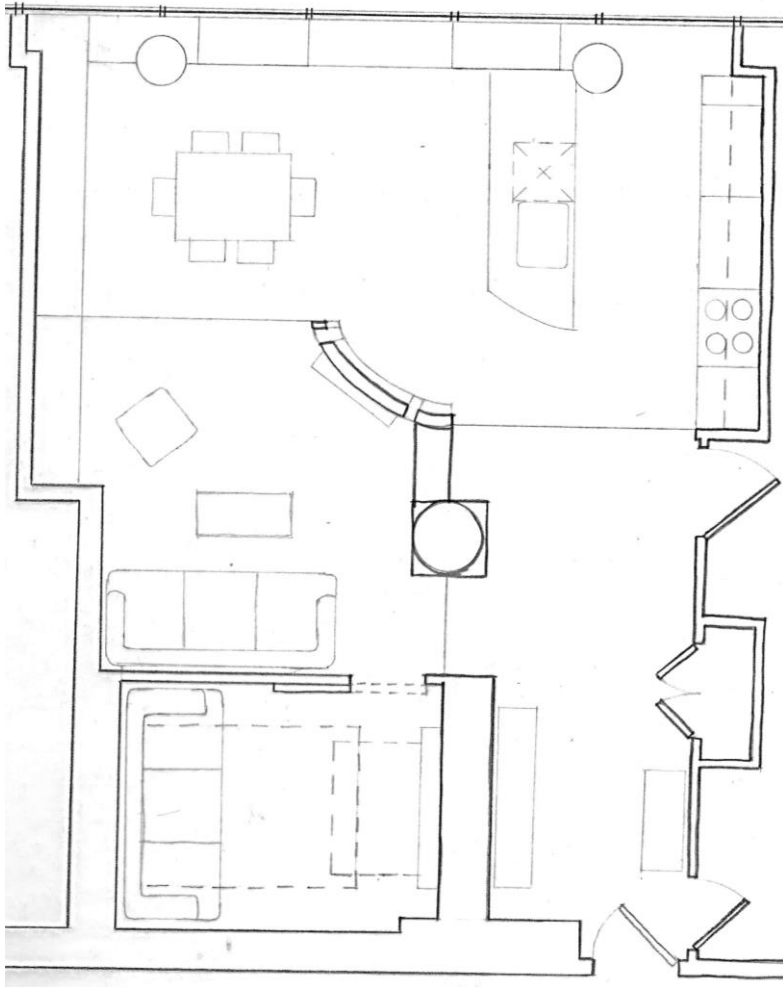
#3



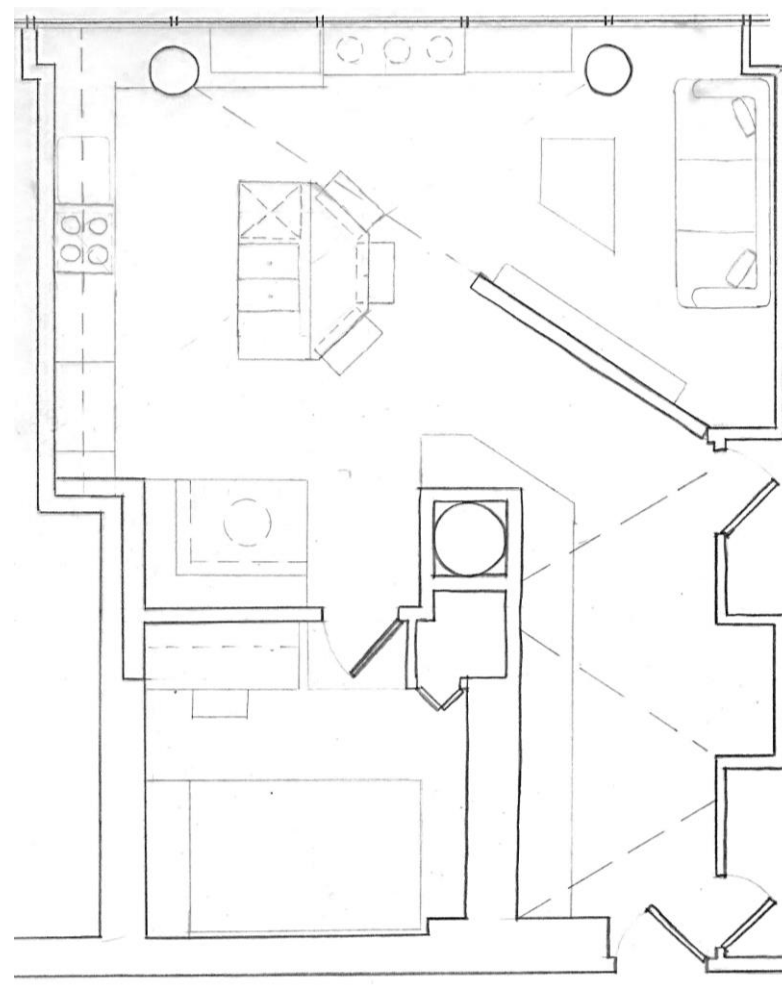
5 LOOSE DIAGRAMS



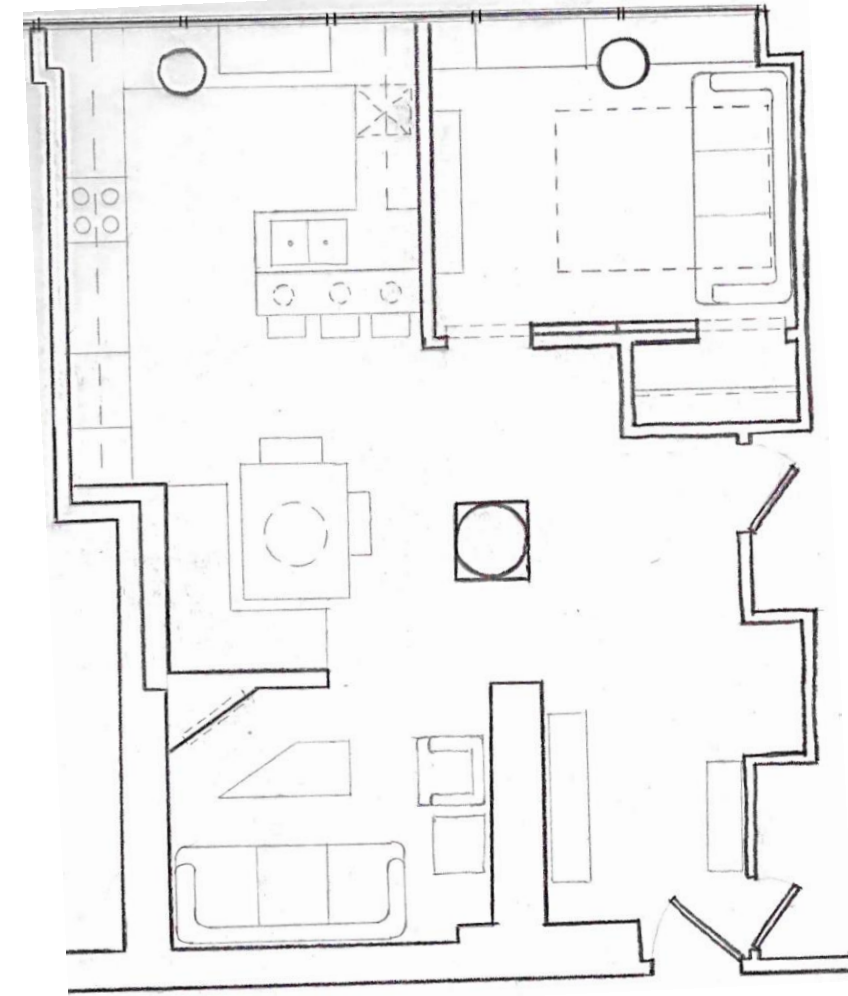
#1



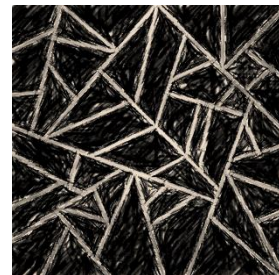
#2

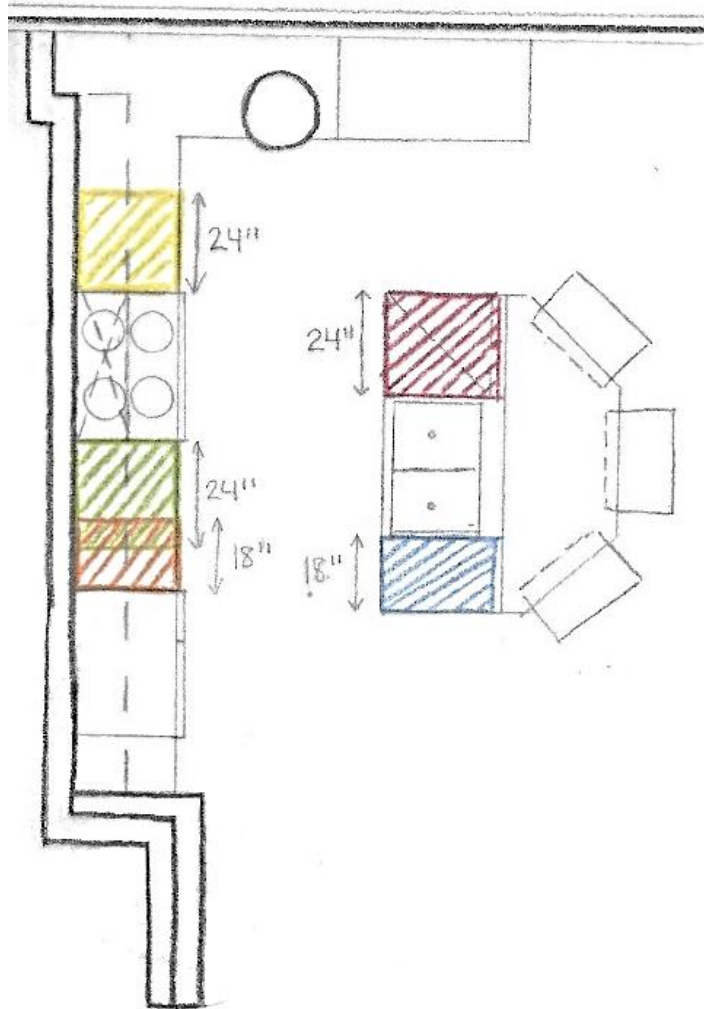


#4








3 PRELIMINARY FURNITURE PLANS

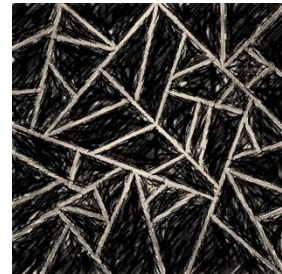


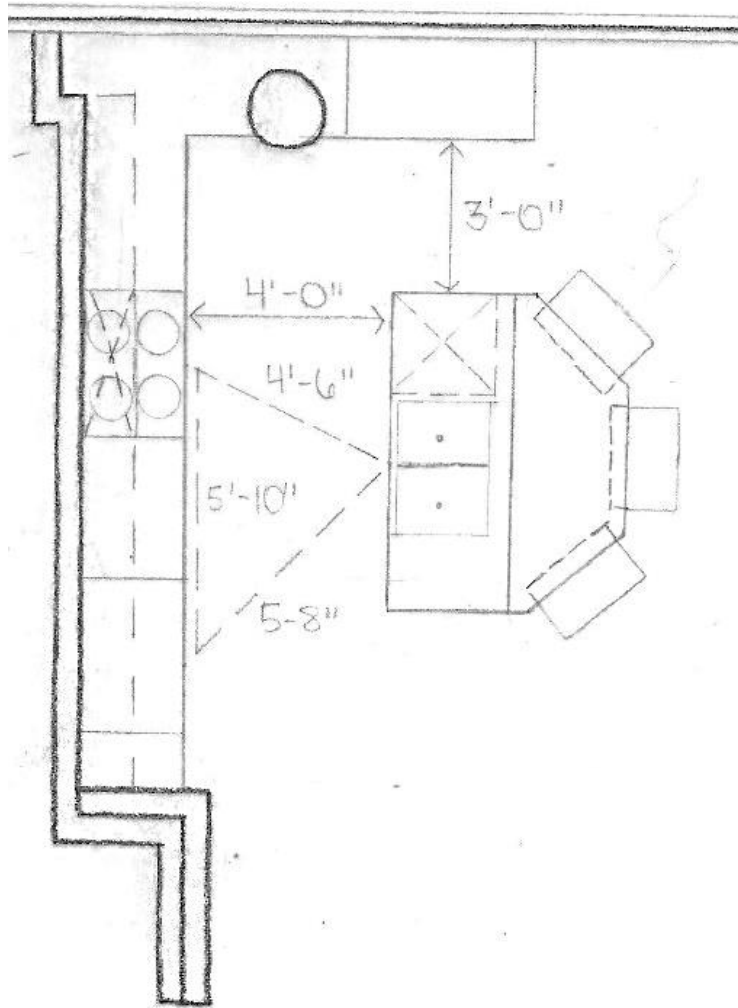


ADJACENT COUNTER SPACE

-  DISHWASHER
-  SINK-OPPOSITE SIDE OF DISHWASHER
-  MICROWAVE
-  STOVE/OVEN (COOKING RANGE)
-  REFRIGERATOR

1 ADJACENT KITCHEN COUNTER SPACE





REFINED KITCHEN WORK TRIANGLE

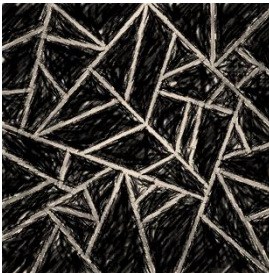
- Ⓐ SINK ↔ REFRIGERATOR
= 5'-8"
- Ⓑ REFRIGERATOR ↔ STOVE
= 5'-10"
- Ⓒ SINK ↔ STOVE
= 4'-6"

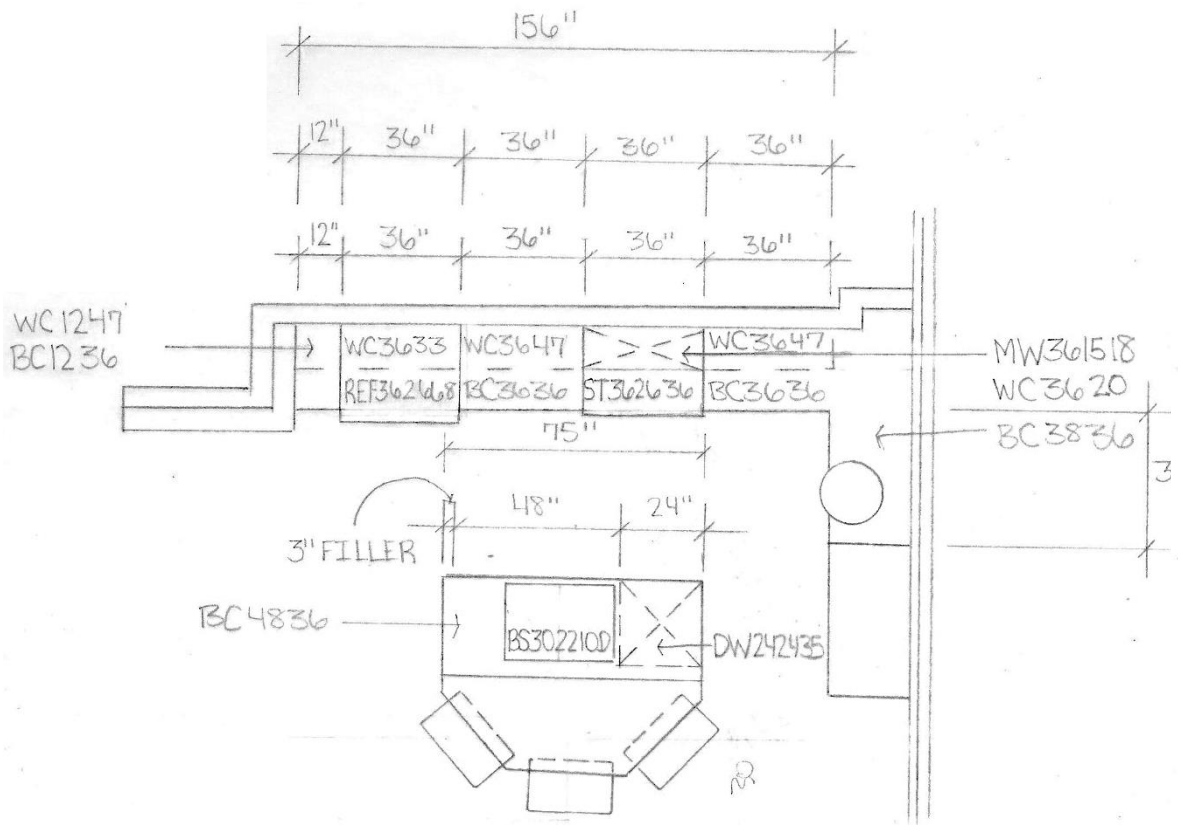
$$\Rightarrow A+B+C$$

$$\Rightarrow 5'-8'' + 5'-10'' = 4'-6''$$

$$\Rightarrow 16'-0''$$

1 REFINED KITCHEN





- REF362668
 - REFRIGERATOR
 - 36" WIDE
 - 26" DEEP
 - 68" HEIGHT
- ST362636
 - STOVE TOP/OVEN
 - 36" WIDE
 - 26" DEEP
 - 36" HEIGHT
- BS302210D
 - BASE SINK
 - 30" WIDE
 - 22" DEEP
 - 10" HEIGHT
- DW242435
 - DISHWASHER
 - 24" WIDE
 - 24" DEEP
 - 35" HEIGHT (MAX)
- MW361518
 - MICROWAVE
 - 36" WIDE
 - 15" DEEP
 - 18" HEIGHT
- BC1236
 - BASE CABINET
 - 12" WIDE
 - 36" HEIGHT
- WC1247
 - WALL CABINET
 - 12" WIDE
 - 47" HEIGHT
- WC3633
 - WALL CABINET
 - 36" WIDE
 - 33" HEIGHT
- WC3647
 - WALL CABINET
 - 36" WIDE
 - 47" HEIGHT
- BC3636
 - BASE CABINET
 - 36" WIDE
 - 36" HEIGHT
- BC3836
 - FAUX BASE CABINET
 - 38" WIDE
 - 36" HEIGHT
- BC4836
 - BASE CABINET
 - 48" WIDE
 - 36" HEIGHT
- MW361518
 - MICROWAVE
 - 36" WIDE
 - 15" DEEP
 - 18" HEIGHT
- WC3620
 - WALL CABINET
 - 36" WIDE
 - 20" HEIGHT
- BC3636
 - BASE CABINET
 - 36" WIDE
 - 36" HEIGHT
- WC3647
 - WALL CABINET
 - 36" WIDE
 - 47" HEIGHT
- BC3836
 - FAUX BASE CABINET
 - 38" WIDE
 - 36" HEIGHT

1 KITCHEN CONFIGURATION WITH CODES

