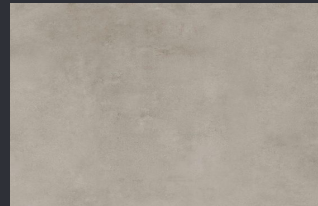
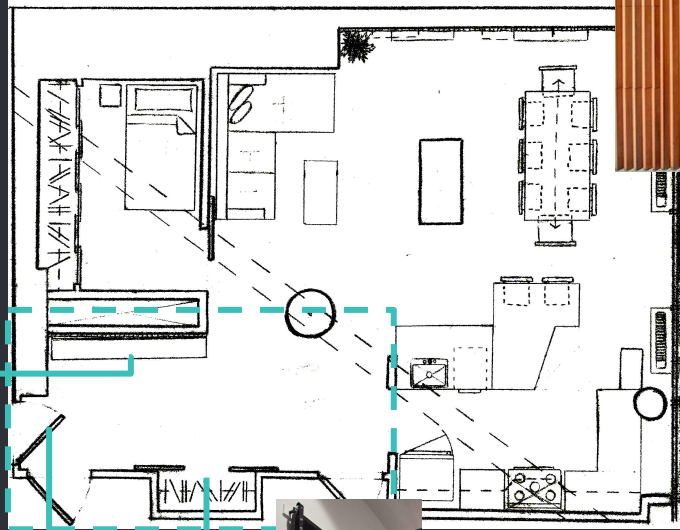
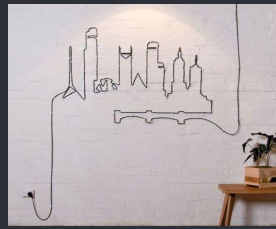




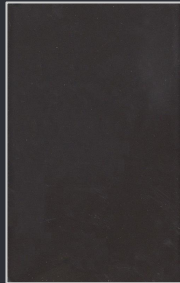
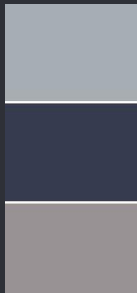
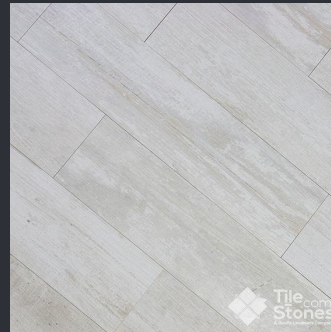
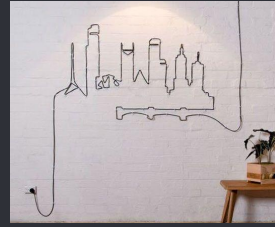
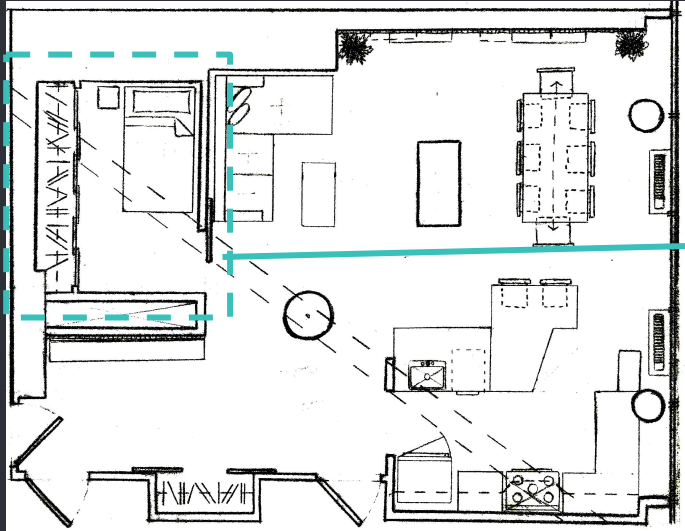
Harbor Point

Moriah Crozier

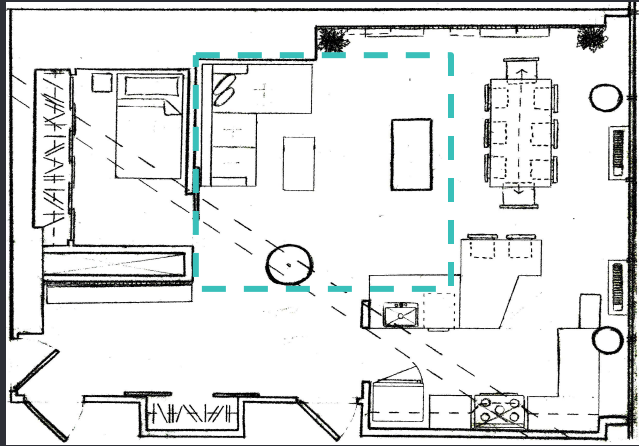
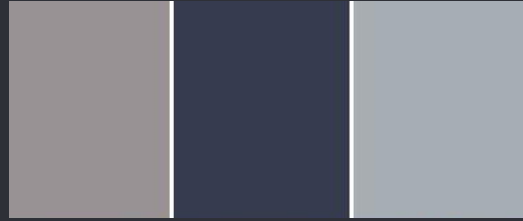
Foyer Concept - 300



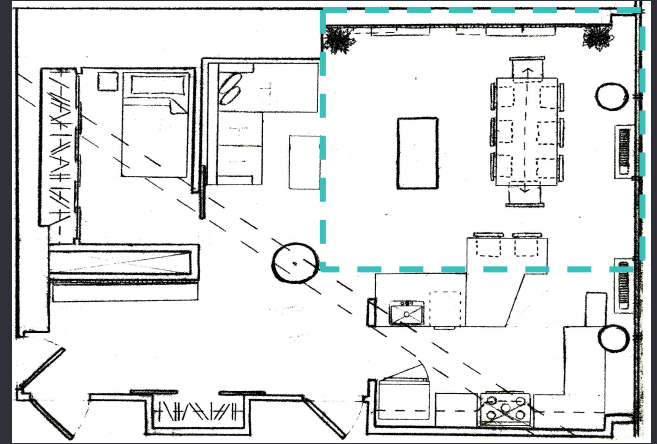
Den/Guest Room Concept - 301



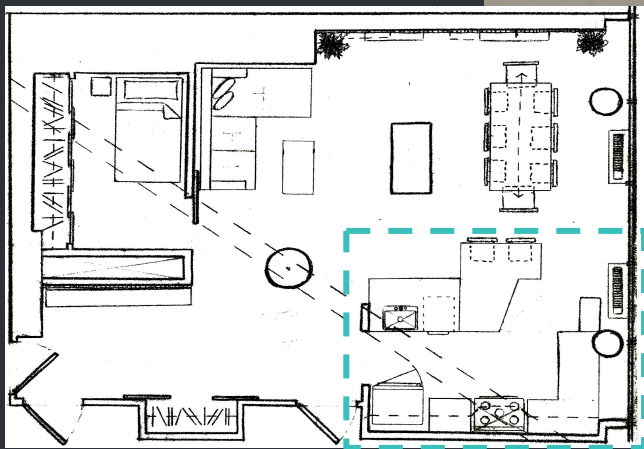
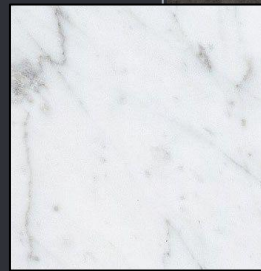
Living Room Concept - 302



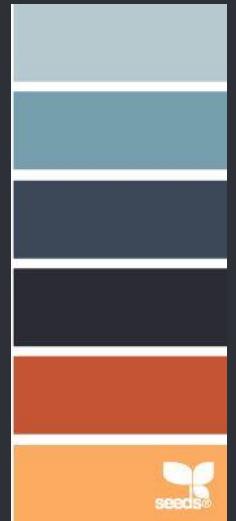
Dining Room Concept - 303



Kitchen Concept - 304



Materials & Finishes



Room Schedule

Room Number	Description
300	Foyer
301	Den
302	Living
303	Dining
304	Kitchen

Room Finishes Schedule

Room	Floor	Base	Wall	Ceiling	Ceiling Height	Remarks
Foyer	Polished Concrete	3" Simple	Paint	PTD. GYP. Board	10'	
Den	Diagonal Wooden Planks	3" Simple	Paint	PTD. GYP. Board	9'	1' Beam
Living	Polished Concrete	3" Simple	Paint	PTD. GYP. Board	10'	
Dining	Polished Concrete	3" Simple	Paint	PTD. GYP. Board	10'	
Kitchen	Ceramic Tile Planks	3" Simple	Paint	PTD. GYP. Board	9'	1' Beam

Materials & Finishes Schedule

Room	Mark	Material/Finish	Manufacturer	Color/Catalog No.	Remarks
300, 301, 302, 303	PT1	Paint w/ Matte Finish	Behr	M490-7	Shasta Lake
300, 301, 302, 303, 304	PT2	Paint w/ Matte Finish	Behr	N430-2	Nature's Reflection
301	WF	Prefinished Greywood Hardwood Flooring	Lumber Liquidators	10040435	Oceanside Oak Grey
304	T	Porcelain Tile	Lowes	Item #553878 Model #0600101	Natural Timber Ashwood Look
303, 304	C1	Concrete Wall and Flooring	Smith Paint Products	0A 830	Grey
300, 302, 303, 304	C2	Polished Concrete Floor	Smith Paint Products	0A 810	Natural
304	BC	Base Cabinet	Omega Cabinetry	Tarin	Walnut with Kodiak Finish
304	WC	Wall Cabinet	Omega Cabinetry	Tarin	Walnut with Kodiak Finish