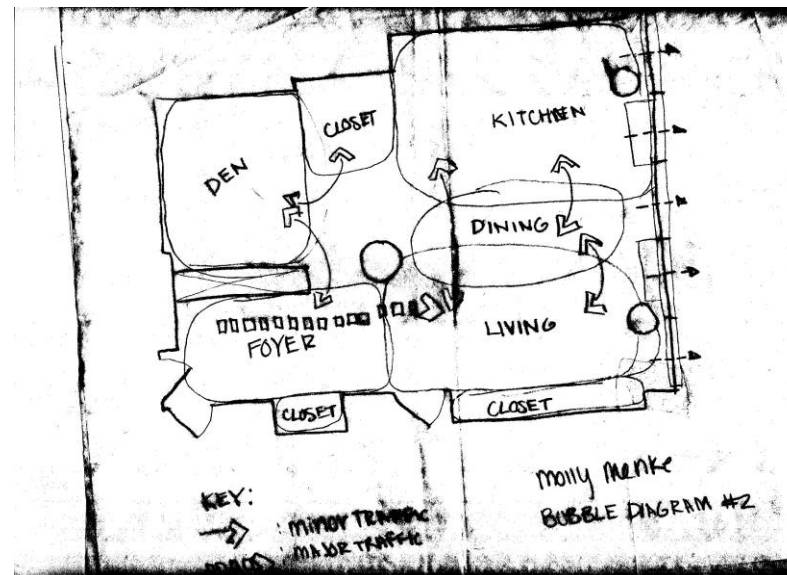
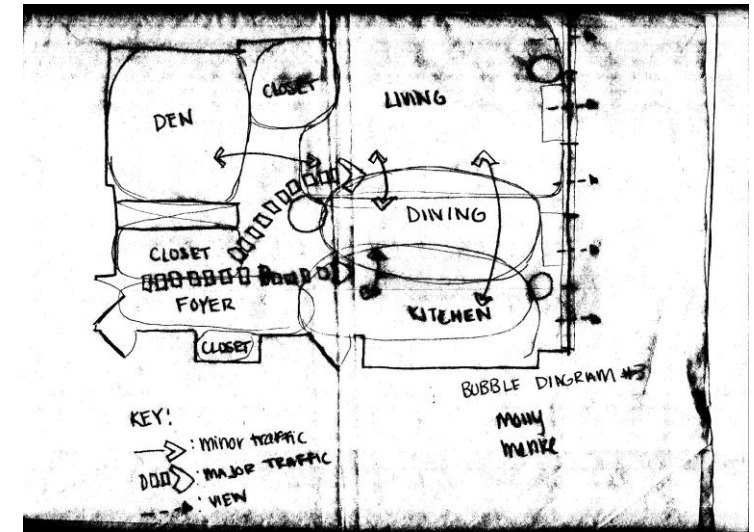
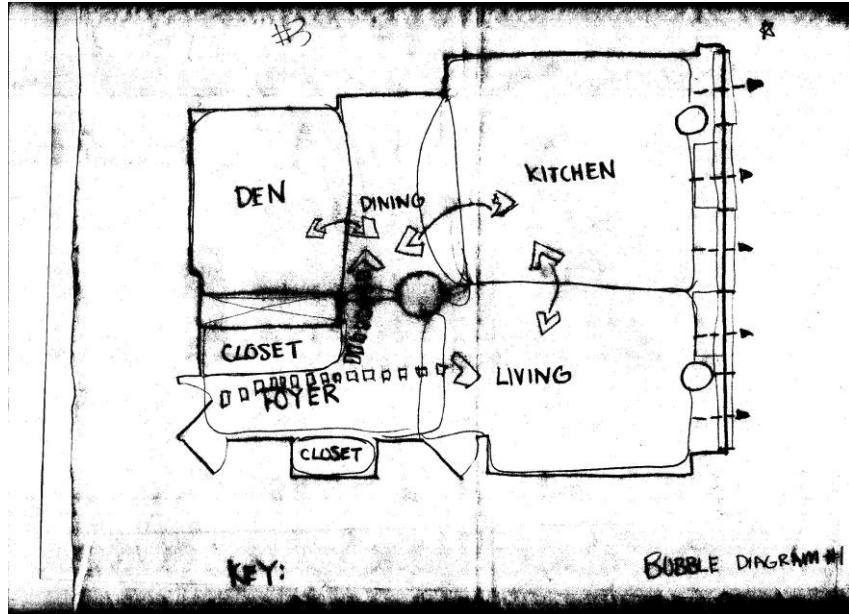




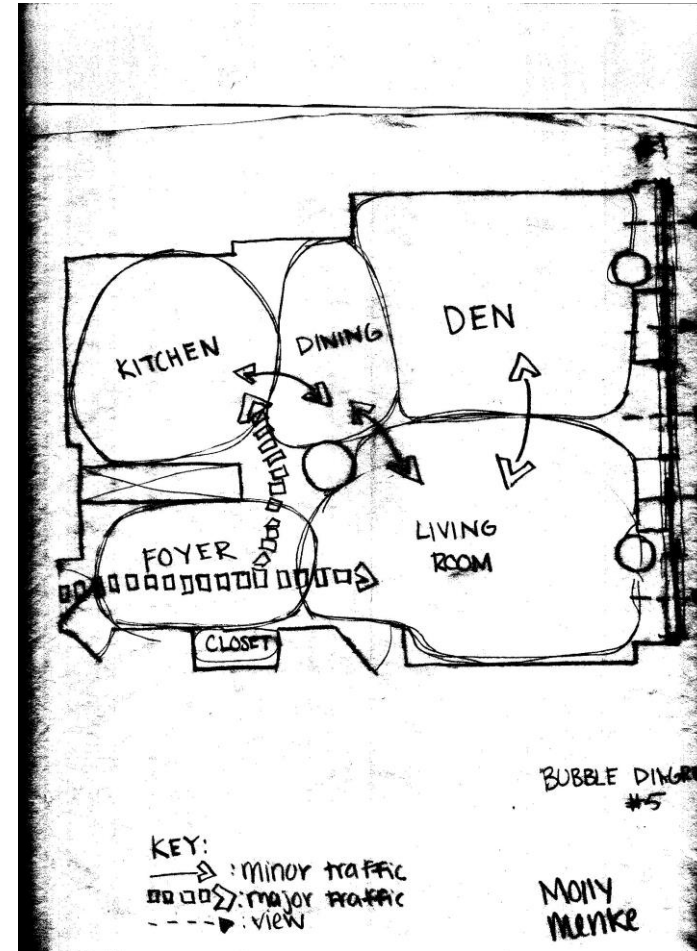
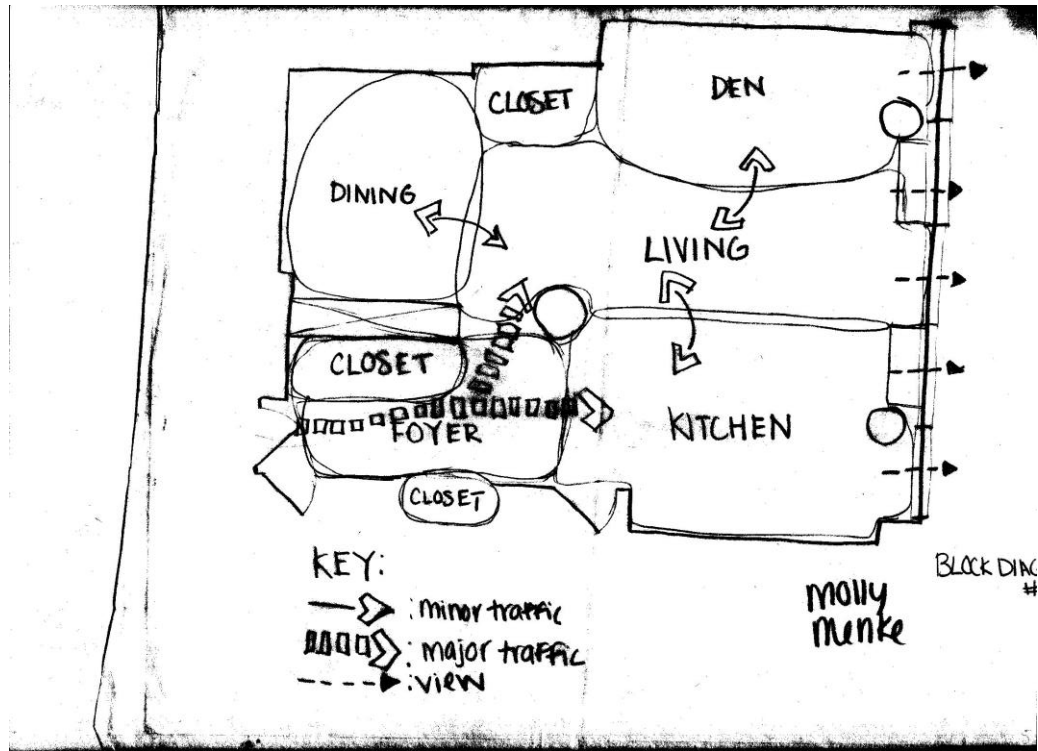
CONCEPTUAL DIAGRAMS

MOLLY MENKE

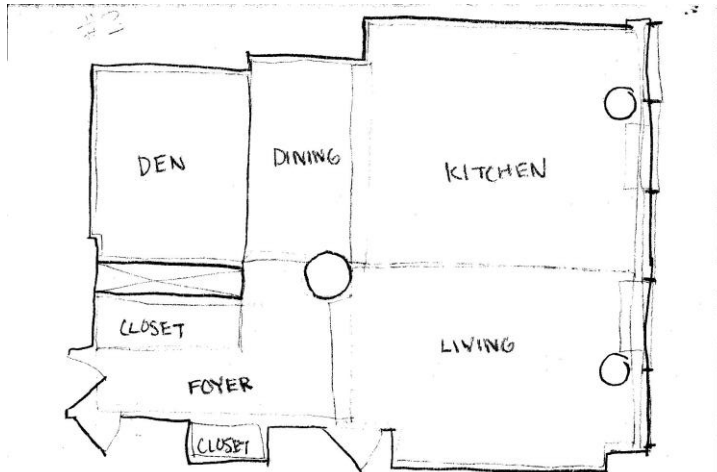
BUBBLE DIAGRAMS



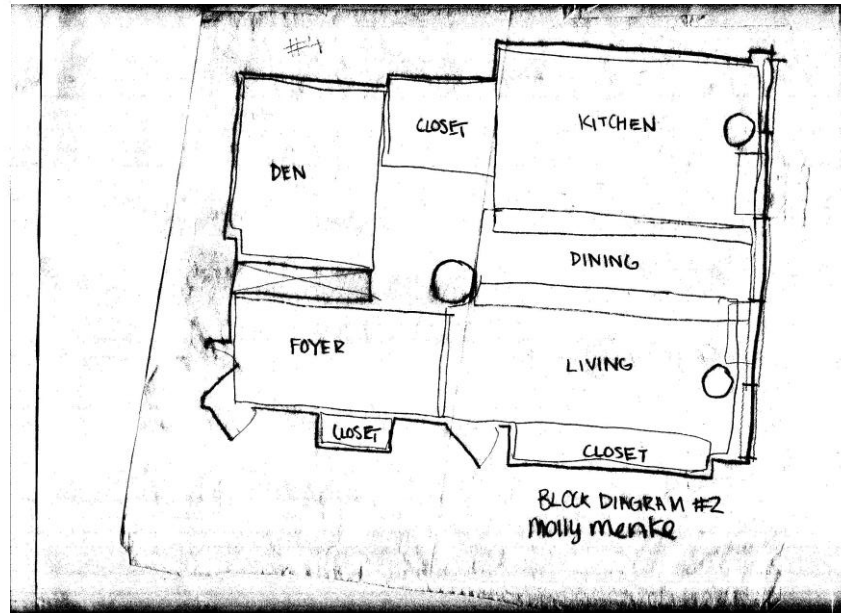
BUBBLE DIAGRAMS



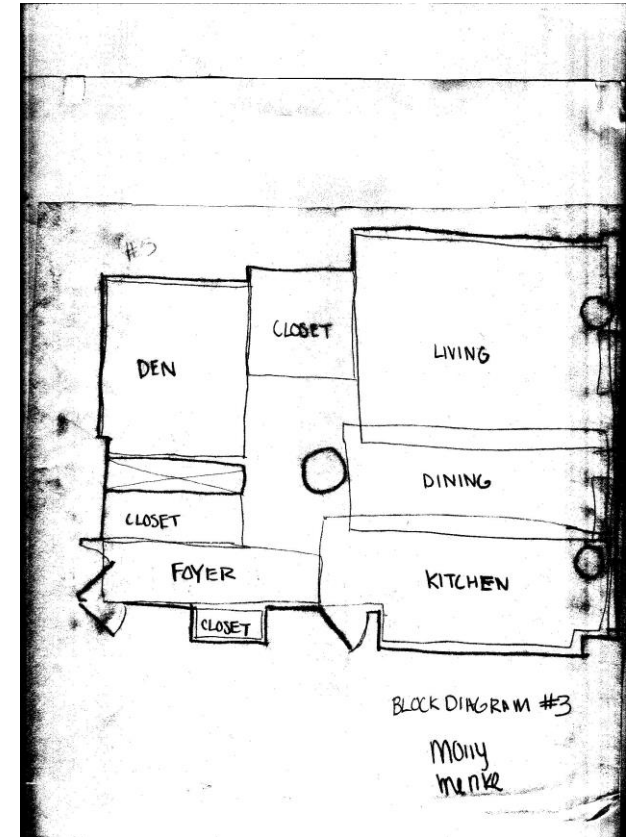
BLOCK DIAGRAMS



BLOCK DIAGRAM #1
MOLLY MENKE

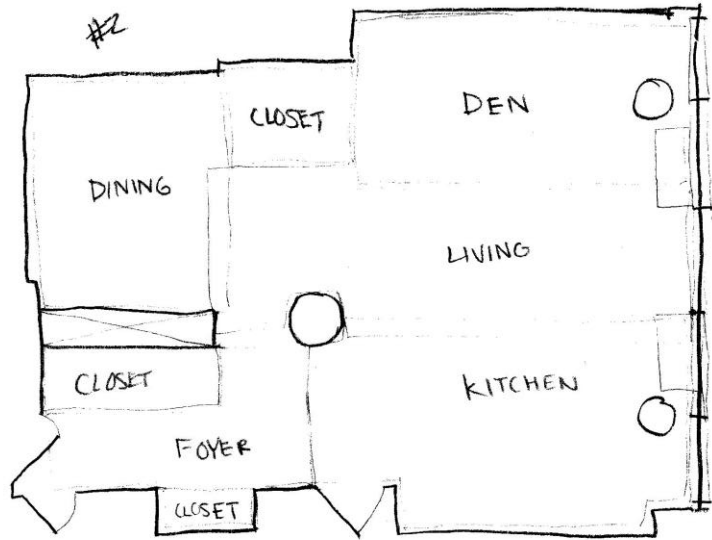


BLOCK DIAGRAM #2
MOLLY MENKE

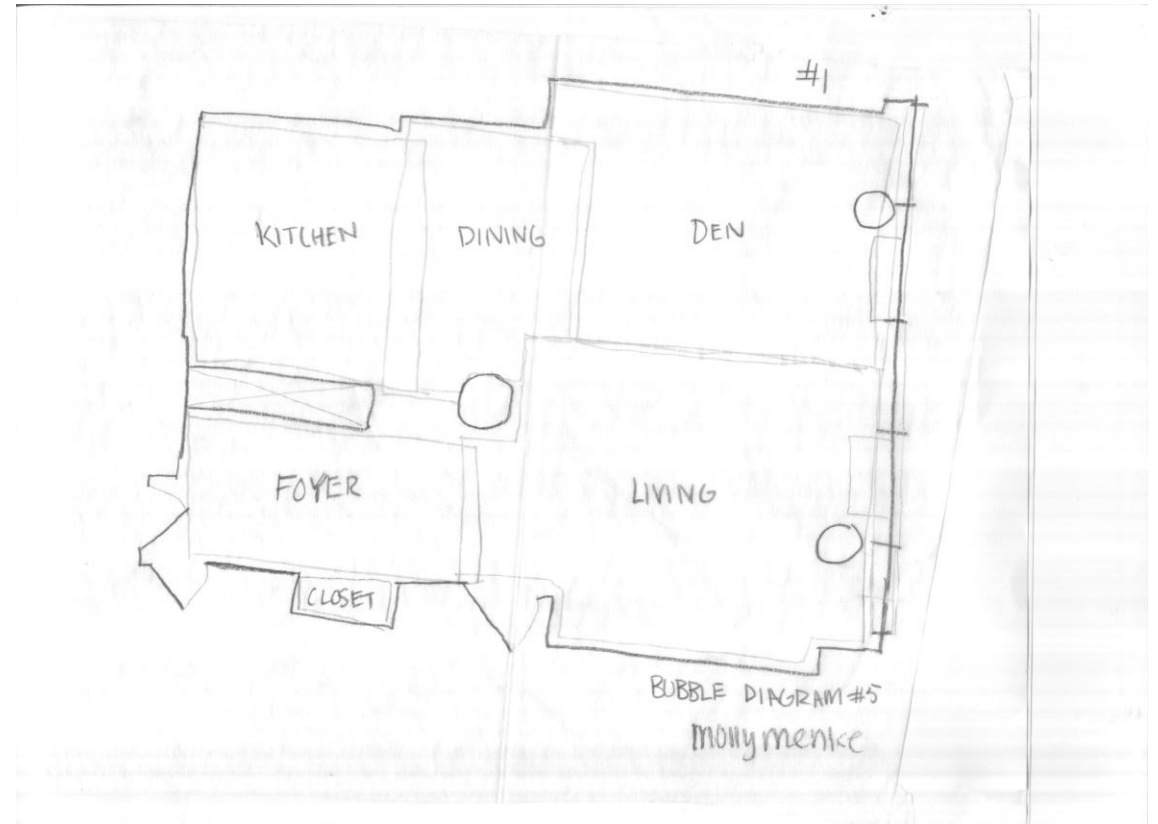


BLOCK DIAGRAM #3
MOLLY MENKE

BLOCK DIAGRAMS

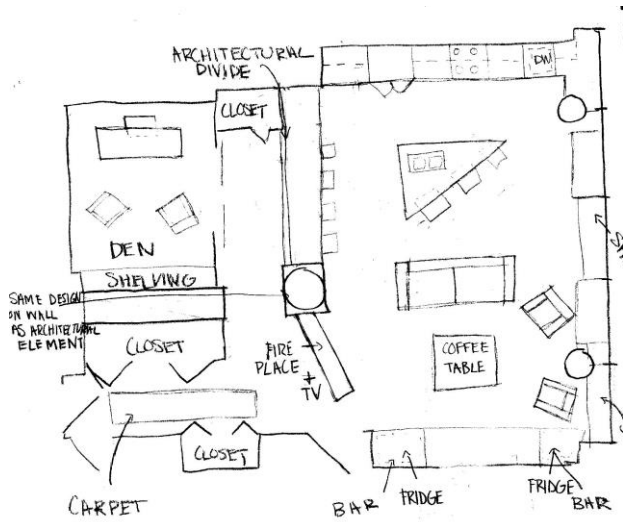


BLOCK DIAGRAM #4
Molly Menke

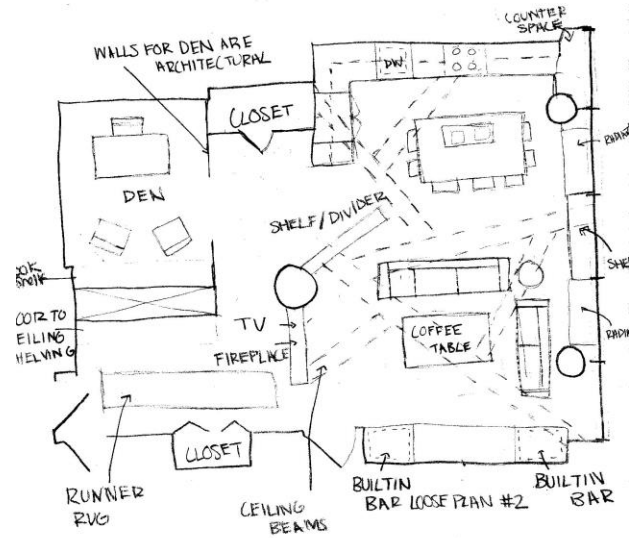


BUBBLE DIAGRAM #5
Molly Menke

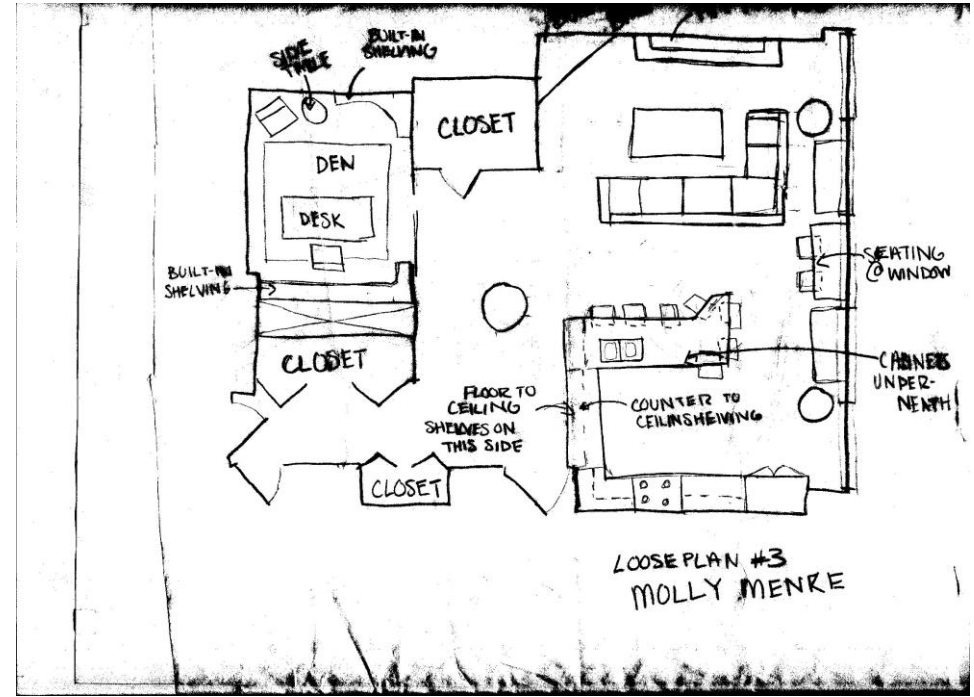
LOOSE DIAGRAMS



LOOSE PLAN #1
MOLLY MENKE

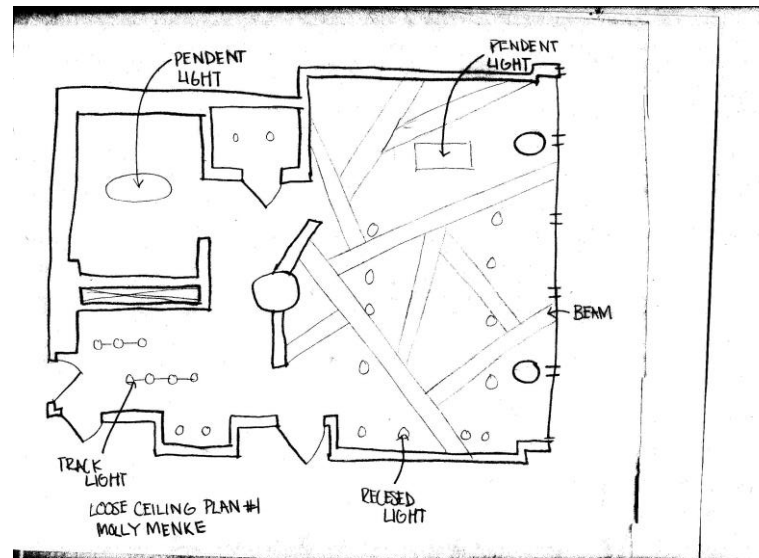
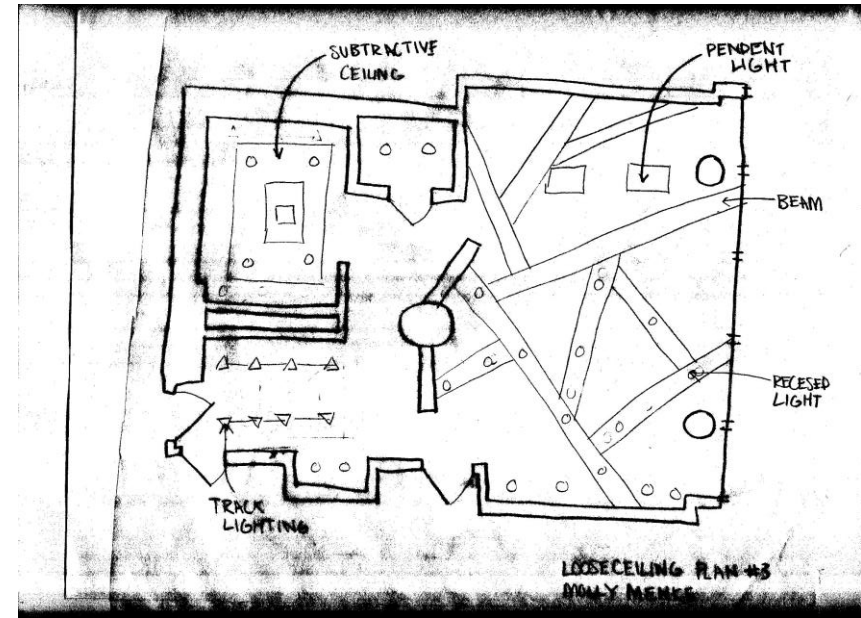
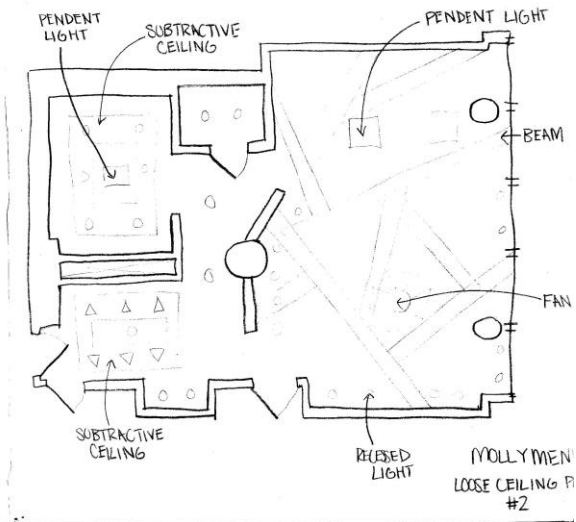


LOOSE PLAN #2
MOLLY MENKE

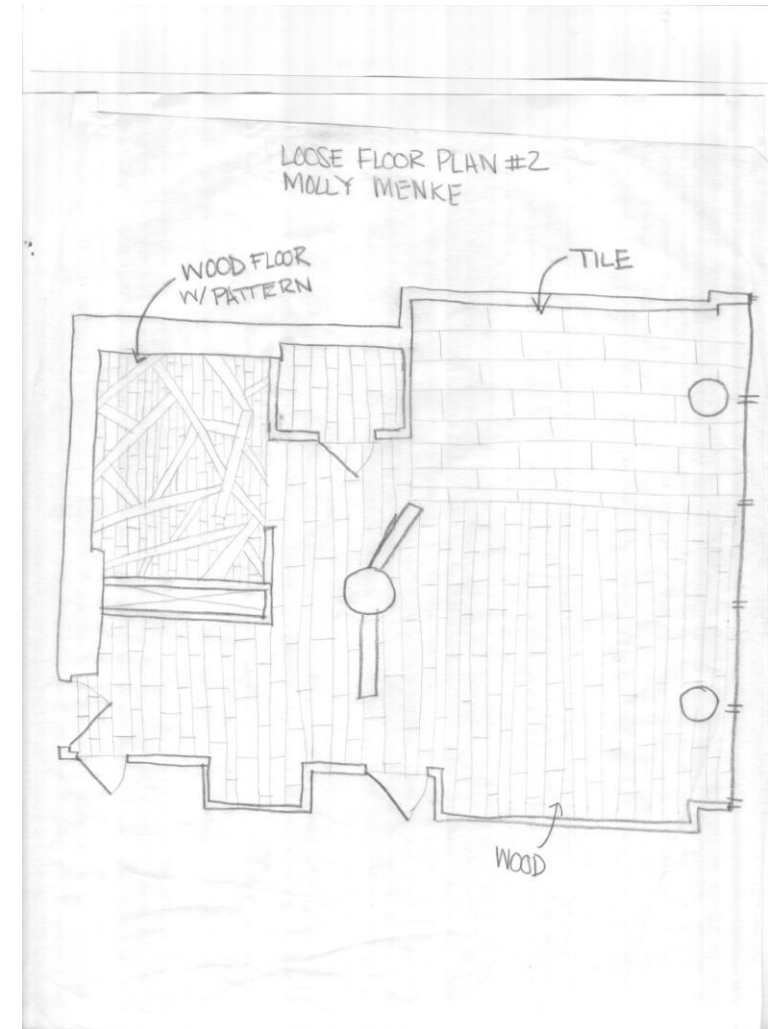
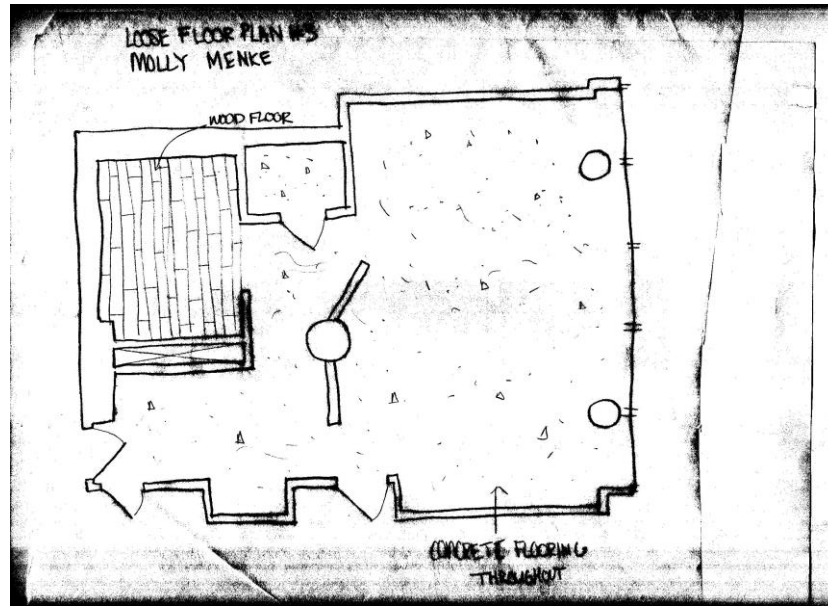
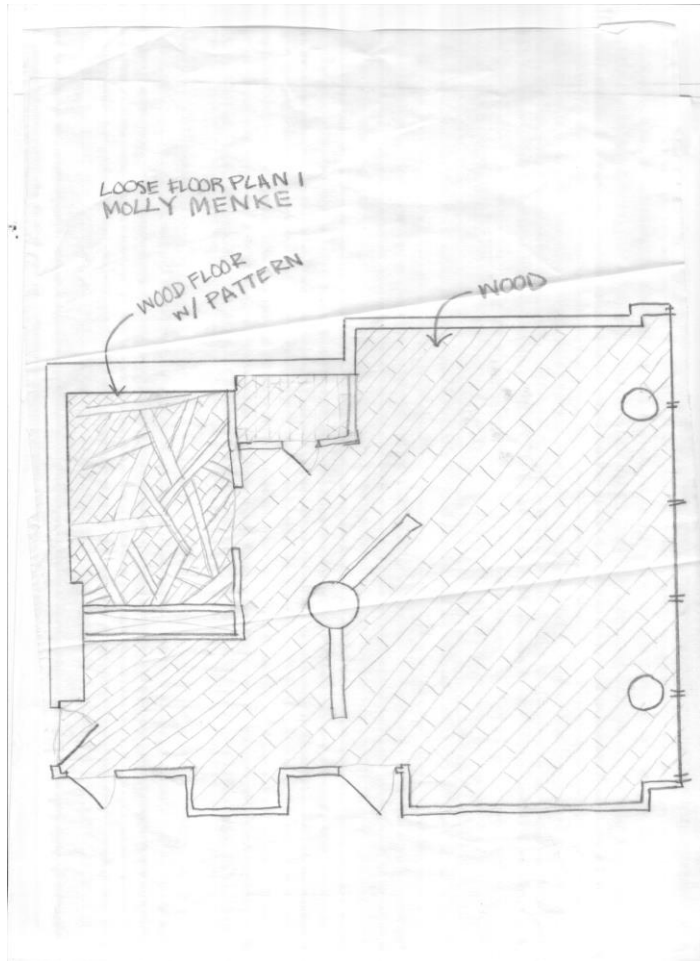


LOOSE PLAN #3
MOLLY MENKE

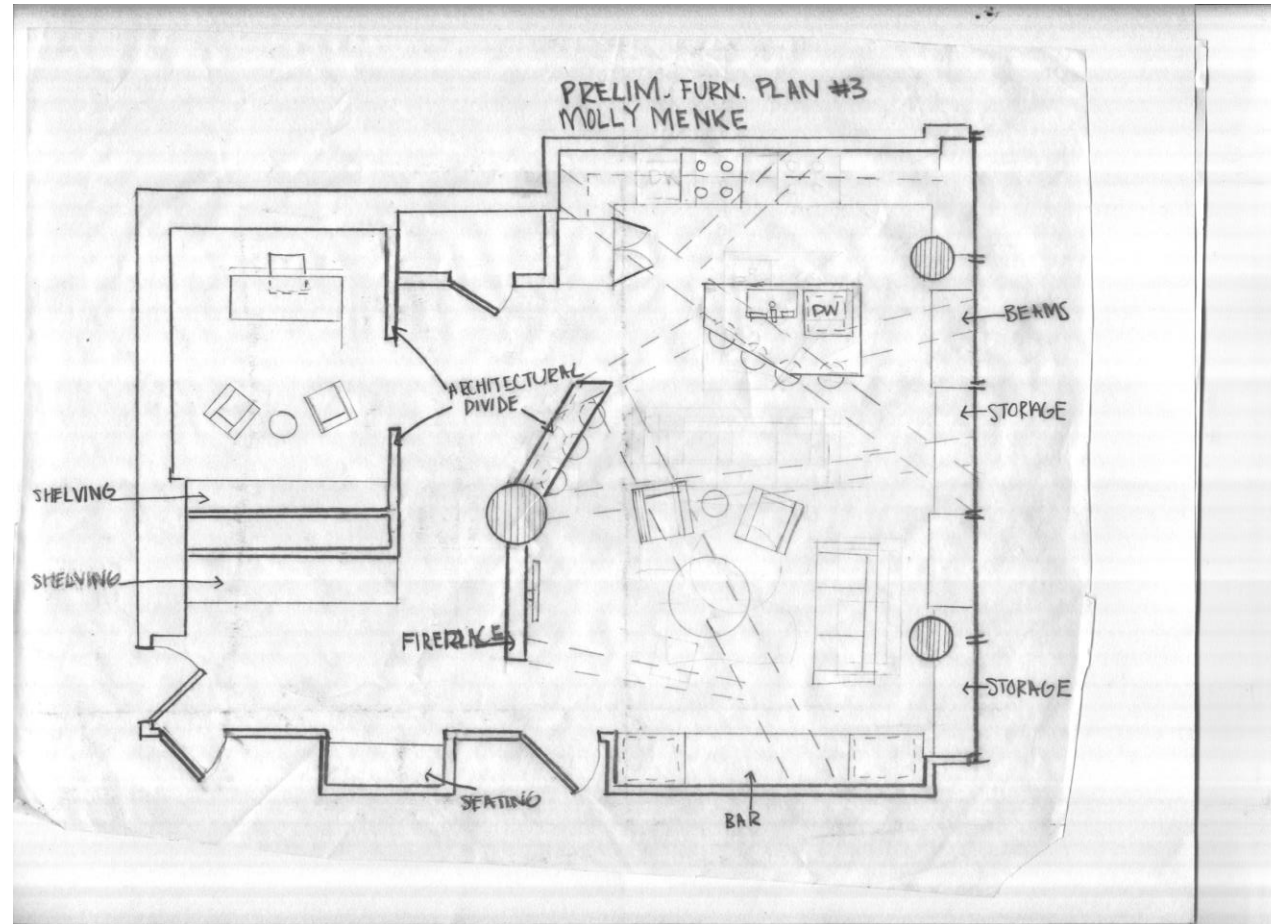
CEILING LAYOUTS



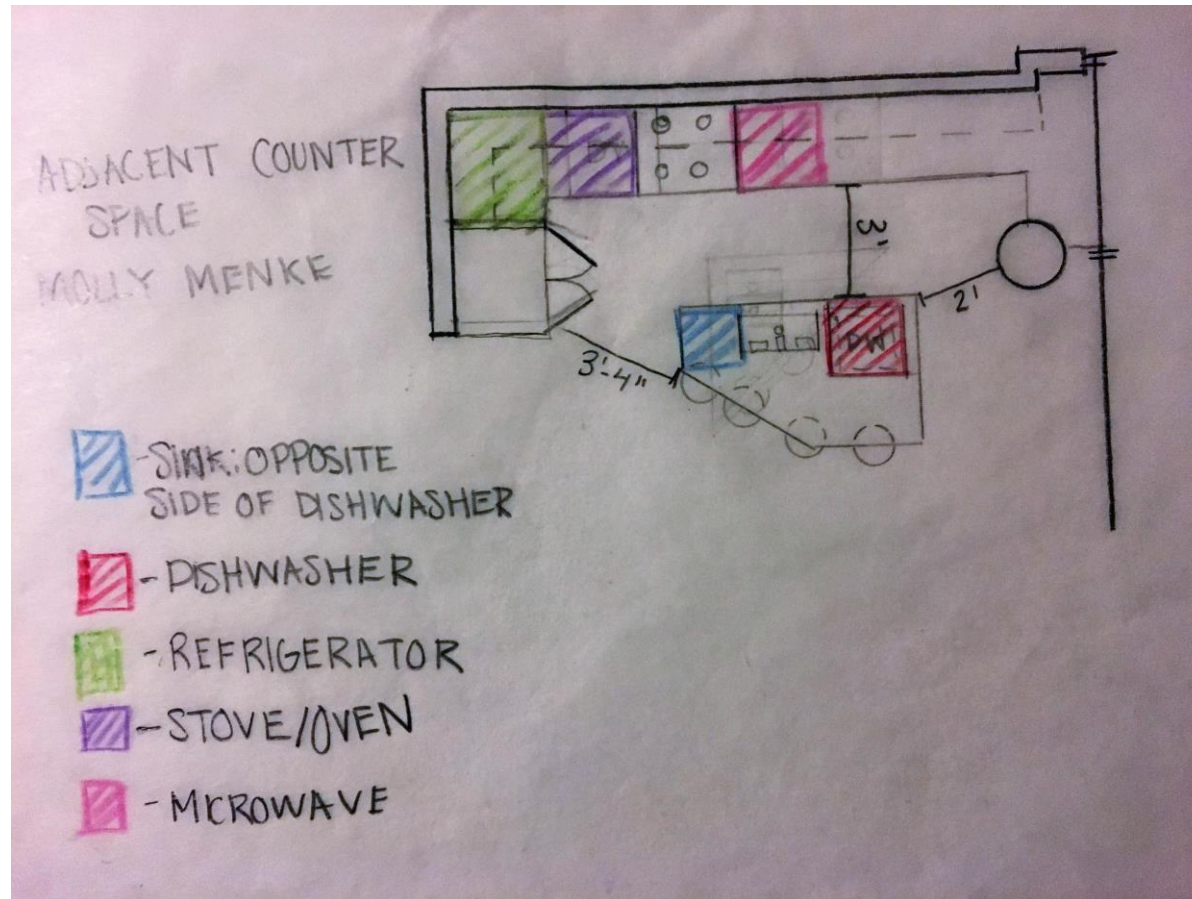
FLOOR DESIGN LAYOUTS



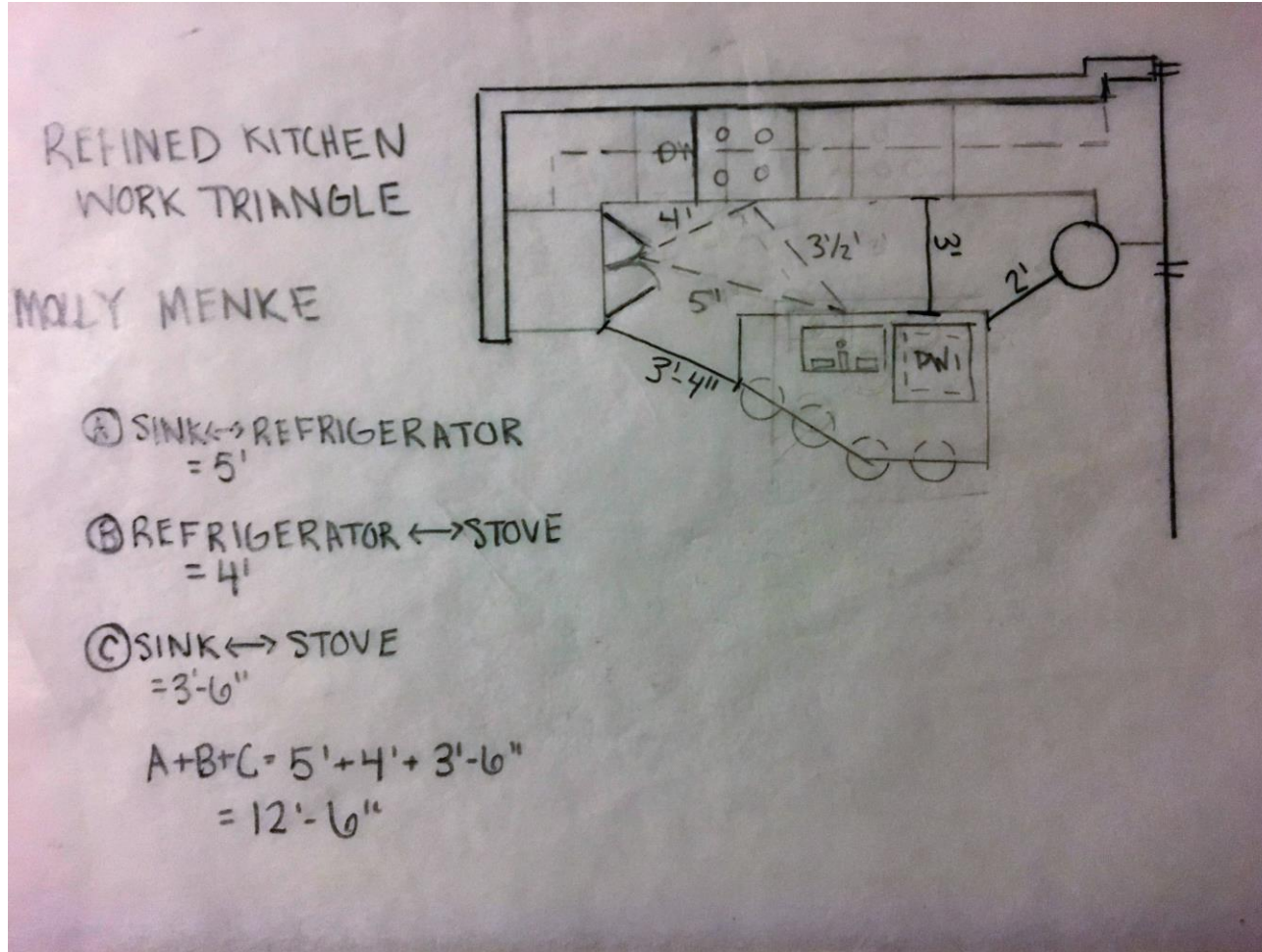
PRELIMINARY FURNITURE PLAN



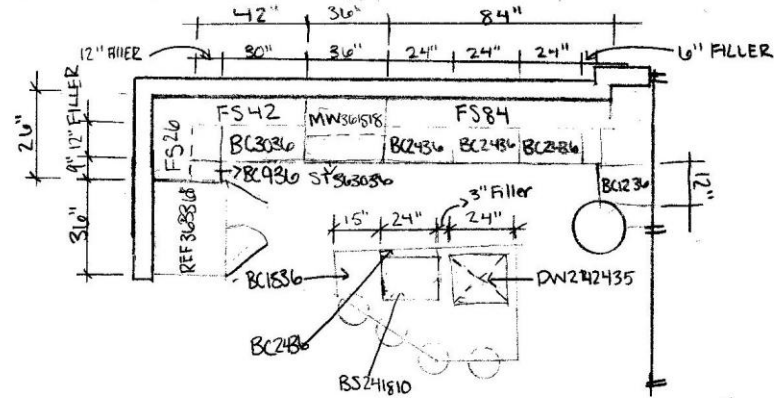
ADJACENT KITCHEN COUNTER SPACE



REFINE KITCHEN



KITCHEN CONFIGURATION WITH CODES



MOLLY MENKE
KITCHEN CONFIGURATION

- | | | | | |
|------------------------------------------------------------------|---------------------------------------------------------------------|-----------------------------------------------------------------|-------------------------------------------------------------|----------------------------------------------------------------|
| BC1236
-BASE CABINET
-12" WIDE
-36" HEIGHT | REF363335
-REFRIGERATOR
-36" WIDE
-33" DEEP
-68" HEIGHT | FS42
-FLOATING SHELF
-42" WIDE | ST363036
-STOVE
-36" WIDE
-30" DEEP
-36" HEIGHT | BC1536
-BASE CABINET
-15" WIDE
-36" HEIGHT |
| DW242435
-DISHWASHER
-24" WIDE
-24" DEEP
-35" HEIGHT | FS26
-FLOATING SHELF
-26" WIDE | BC3036
-BASE CABINET
-30" WIDE
-30" HEIGHT | FS84
-FLOATING SHELF
-84" WIDE | BC2436
-BASE CABINET
-24" WIDE
-36" HEIGHT |
| BC936
-BASE CABINET
-9" WIDE
-36" HEIGHT | BC936
-BASE CABINET
-9" WIDE
-36" HEIGHT | MW361518
-MICROWAVE
-36" WIDE
-15" DEEP
-18" HEIGHT | BC2436
-BASE CABINET
-24" WIDE
-36" HEIGHT | BS241810
-BASE SINK
-24" WIDE
-18" DEEP
-8" HEIGHT |