

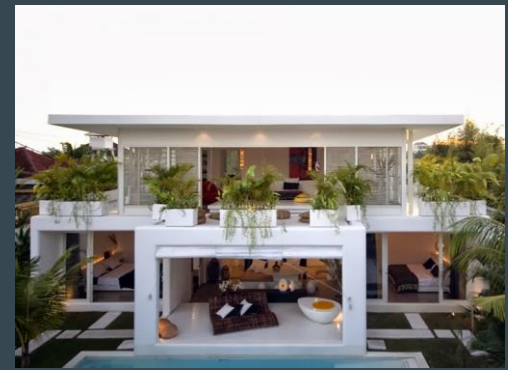
Malaysian Bungalow Precedent Study



Hannah Ohlsen. Peyton Taylor. Ellyn Menke

Balinese Modern Style

Balinese style combines traditional elements and the abundance of natural resources offered up by the land. The craftsmanship of the people is emphasized with quality built structures that bring together human, nature, and God. The designers make sure to use natural elements that complement the land. Features of modern balinese style homes include substantial garden areas and large open windows that allow the breeze to flow through the home and extend the living space to the outdoors. Balinese homes are also to be built around the 7 philosophies of design. Following these philosophies creates a tranquil home which is a staple of the balinese style.



FOOD

Malaysian food is generally spicy. Southeast Asian herbs and spices are blended with Middle Eastern and Chinese spices to get the unique flavor of Malaysian food. Many Malay curries are made with spices like coriander and cumin. Rice is a staple of Malaysian food. Sambal sauce is a condiment frequently used in Malaysia. It has a complex flavor that is described to be “earthy, spicy, and hot.”



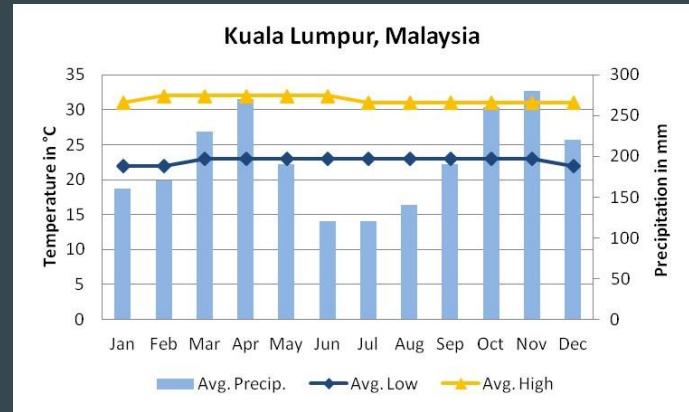
PEOPLE

Malaysian, or Standard Malay, is the official language of Malaysia. Generally men have more power than women in Malaysian society. Top authorities are usually male roles but segregation is not an issue among Malaysian people. Malaysia has a traditional society- Elders are highly respected, women are expected to dress modestly, etc.



Climate of Malaysia

Malaysia has a very tropical climate. High heat and high humidity are the norm as it is located on the equator. The temperatures in Malaysia reach an average of 82 degrees Fahrenheit and rarely fall below 68 degrees Fahrenheit, even at night. The forecast frequently calls for rain, however, mid-October through March is considered the rainy, or monsoon, season



Malaysian Culture

Malaysia is home to a wide variety of ethnicities thanks to its geography. The largest ethnic groups are the Malays, Chinese and Indians. These cultures, mixed with an abundance of other smaller cultures, have all influenced each other to create: Malaysian culture. Islam is the official religion of Malaysia but most of the world's religions are freely practiced here creating a very diverse community. In Malaysia, the arts are very important and help the people express their culture.





DRA House

Project Overview:

Residents: An extended Indonesian family

Location: Bali, Indonesia

Builder: D-Associates

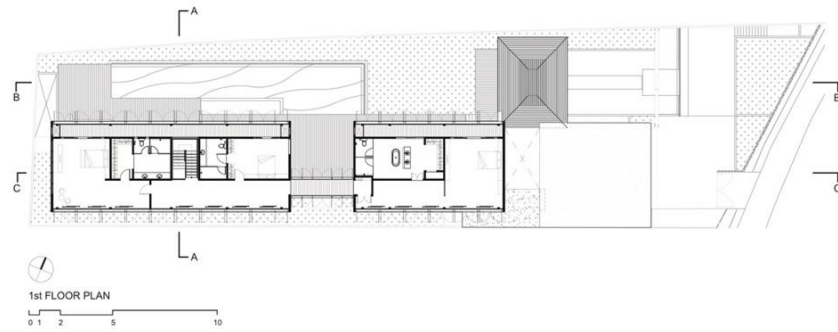
Area: 1,013 square meters

Year: 2016

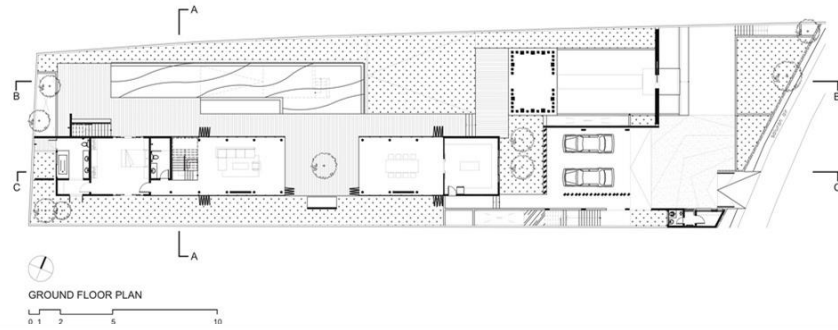
From the Architect...

“The villa is envisioned as a family retreat set in a tropical landscape, a contrast to their Jakarta living, while learning from a particular aspect of spatial configuration of Bali’s indigenous dwelling architecture: an emphasis in breaking up the volume of a house and in blurring the inside and outside spaces.” “the considerably tall massing of the main volume of the villa is set back and scaled down through a strategic configuration of the front part of the site where an enclosed carport area, a landscaped front yard (with a pond) and a foyer pavilion with a flat wooden roof act as a humble entry court to the house. Further toning down the volumetric composition, each of the structural elements are covered by a distinct natural building material.” “The main structure of the villa inside is divided into two volumes of space: the upper level area is configured as a floating dark wooden box sheltering over the lower level area, a contrastingly open and light transparent volume that acts as a platform of family living activities. This strategy again tones down the massing of the villa in order to maintain a sense of home and human scale. The heavy tone of the dark coloured ulin timber and plywood finishing of the upper volume introduces warmth into the villa from the strong tropical sun. The lower volume appears more as a platform of space that merges with the pool and the garden due to the lightness of its enclosing elements.” “This tall terrace space is a spatial bridge that connects the upper level and the lower level, the internal living spaces and the surrounding landscape. It amplifies a sense of lightness and openness into this otherwise large structure. By using the same finishing materials indoor and outdoor, the boundary between the inside and outside is blurred, maximising the family’s experiencing of retreating into the landscape of Bali.”

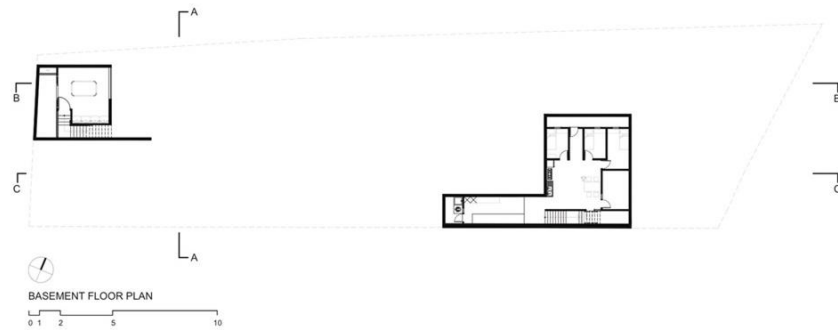
1st floor

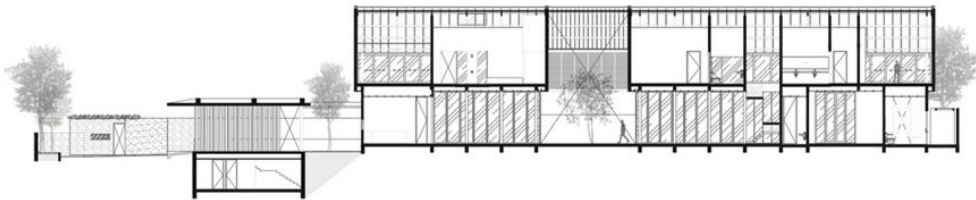


Ground floor

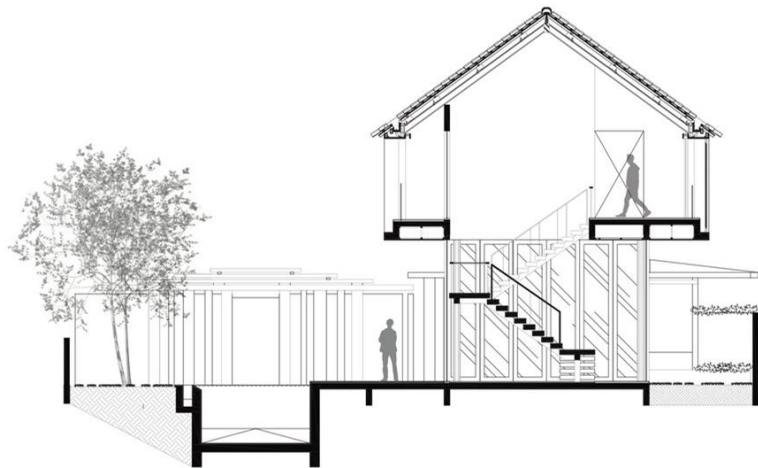


Basement

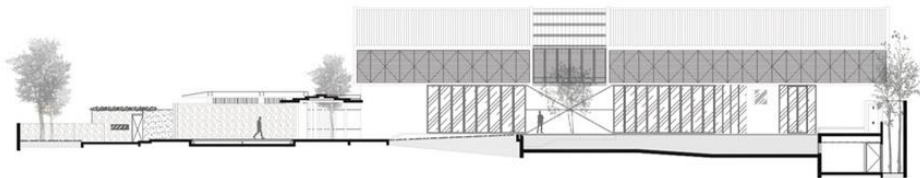




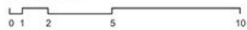
SECTION AA



SECTION CC



SECTION BB



Functionality:



The Dry Kitchen is mainly a show piece. This is an area where a homeowner can show off their wealth. You will have just a refrigerator, sink and microwave in this space. Not meant for messy cooking, small things like sandwich making happen here. Becomes more of a social gathering area.

The Wet Kitchen is more secluded where the cooking really takes place. Here is where the larger appliances are and the messes are made.

The Laundry Room needs to be an indoor/outdoor space because dryers aren't ideal with the amount of heat and sunshine. Clothes are to be hung outside to dry unless it's raining. The laundry area should be located just off the wet kitchen because they are both work areas that may get a little messy and unsightly.

Outdoor space is essential in Malaysian homes because so much of the home revolves around nature. The Malaysians like to use as much of their natural resources as possible so it is important to have outdoor space for living, entertaining and garden

Likes

&

Dislikes

So much outdoor living space

Open and airy

Use of wood to complement the surrounding forest

Modern design

Use of unique angles

Unique materials

Rooms split up.

May not be for everyone

Sustainable Materials

A small foyer space enclosed and supported by a row of recycled ulin timber (previously used as railway track sleepers).



Sources:

<http://www.worldtravelguide.net/malaysia/weather-climate-geography>

<http://www.theluxurysignature.com/2015/02/06/balinese-architecture-overview-and-design-philosophy/>

<http://www.wonderfulmalaysia.com/malaysia-climate-and-monsoon.htm>

<http://www.everyculture.com/Ja-Ma/Malaysia.html>

<http://www.malaysia.travel/en/sg/about-malaysia/culture-n-heritage>

<http://www.sbs.com.au/food/article/2008/07/01/about-malaysian-food>

<https://www.thespruce.com/malaysian-sambal-sauce-3030364>

<http://www.everyculture.com/Ja-Ma/Malaysia.html>

<https://www.tripadvisor.com/Travel-g293951-c4204/Malaysia:The.People.Of.Malaysia.html>

<http://www.everyculture.com/Ja-Ma/Malaysia.html>

<http://www.malaysia.travel/en/sg/about-malaysia/culture-n-heritage>

<http://www.archdaily.com/786122/dra-house-in-bali-d-associates>

<http://www.expatsingapore.com/forum/index.php?topic=913.0>