

MALAYSIAN BUNGALOW

Abbie Decker

PROJECT OVERVIEW

- LOCATION: MAG 5 @ Grandville USJ 1 Petaling Jaya, Selangor, Malaysia
- CLIENTS: Couple with 3 children
- SIZE: Approximately 6,500 sq ft

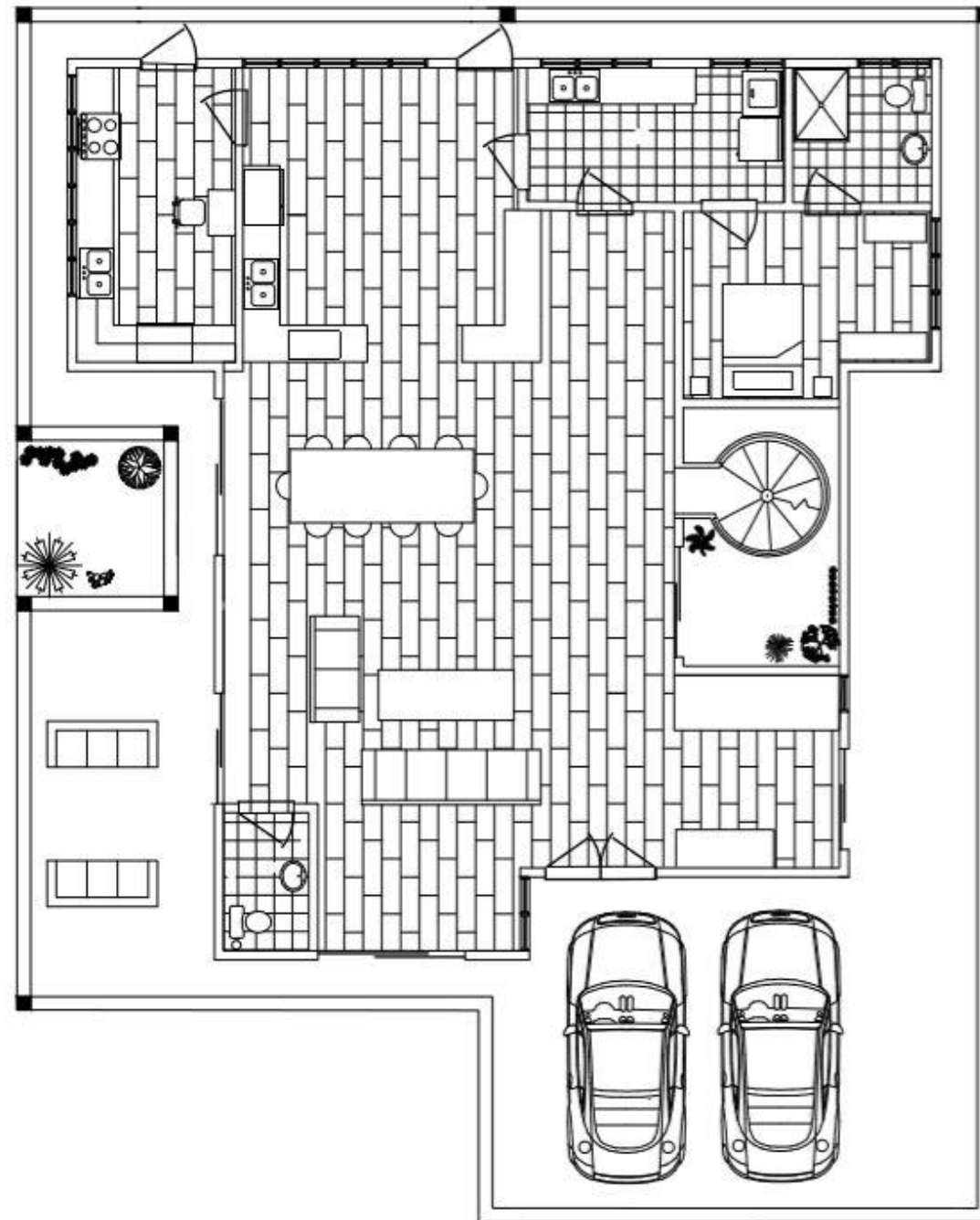
This family of 5 looking for an overall more functional design. Their wet and dry kitchens are too small, especially when hosting guests. Several rooms in the home have placement issues and the kaka's space is too large. The family wants a more aesthetically pleasing interior with a modern Balinese Style.



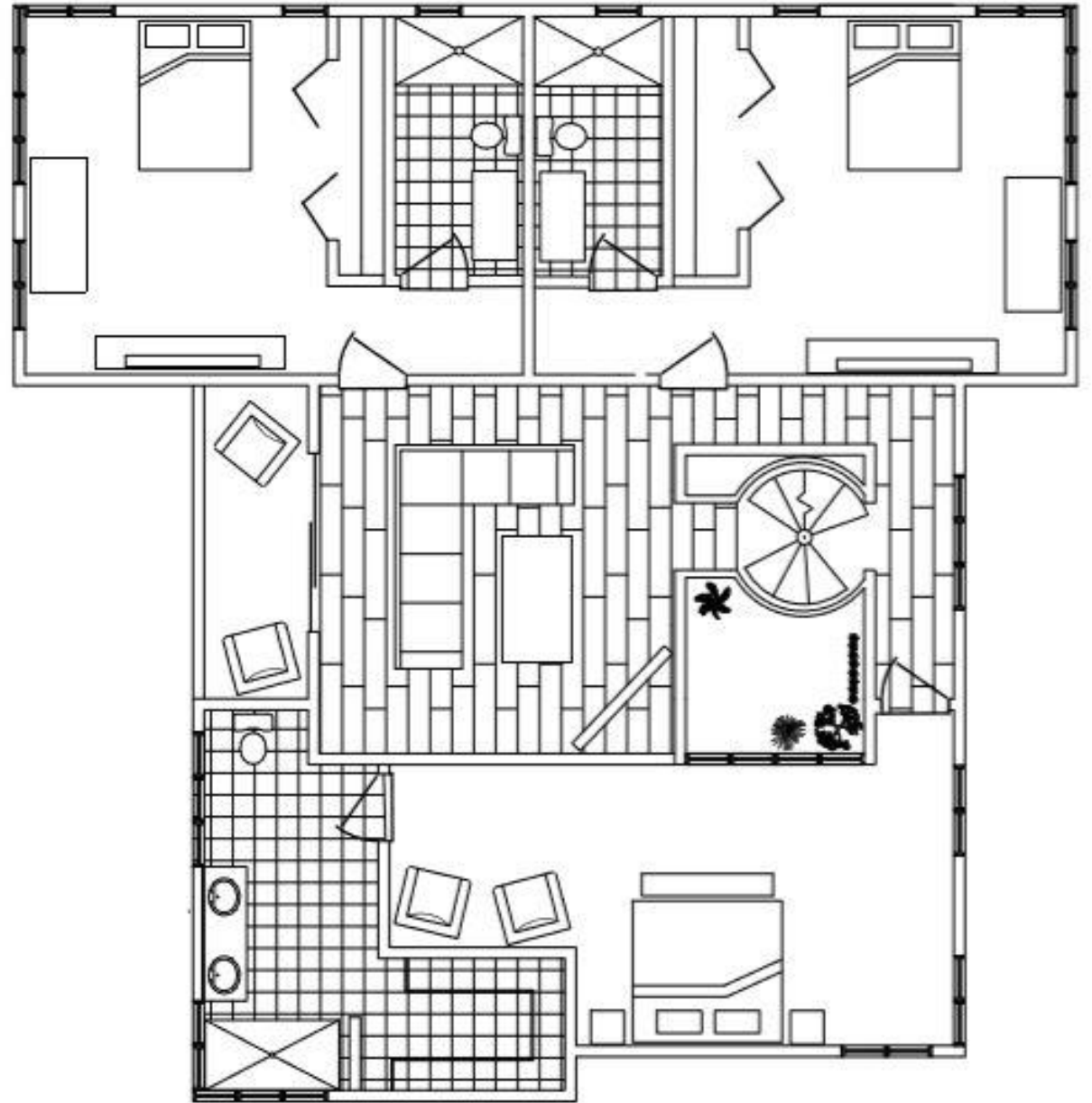
CONCEPT STATEMENT

To create a better space for this family, the layout of the lower floor will be completely rearranged to make better use of their space. A spiral stair case surrounded by an atrium will be the focal point of the home while also bringing in more light and greenery. The kitchens will be expanded and opened up to accommodate the family as well as their guests.

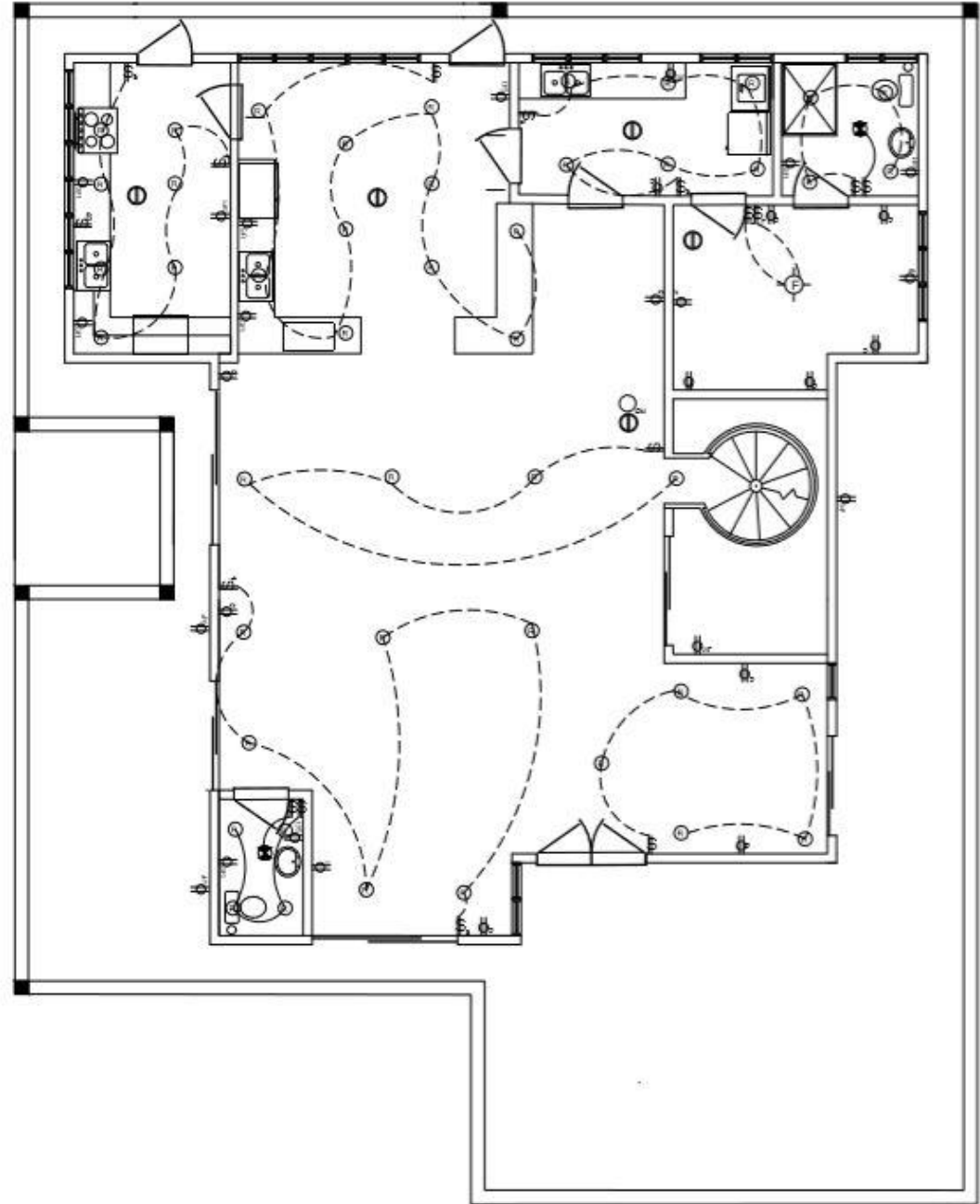
LOWER LEVEL FURNITURE PLAN



2ND LEVEL FURNITURE PLAN




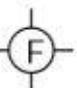



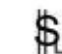

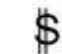




TELEPHONE & ELECTRICAL PLAN



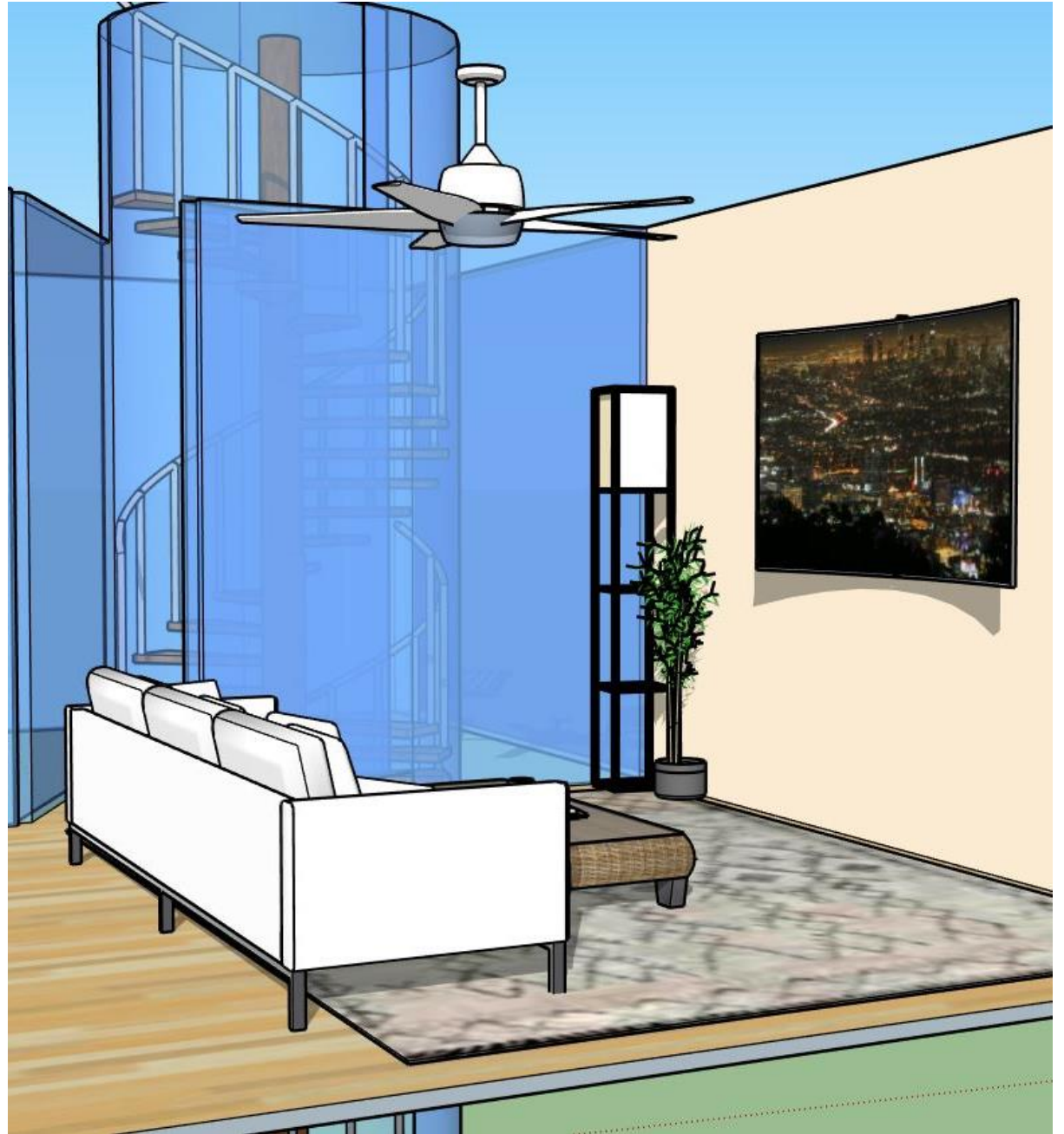
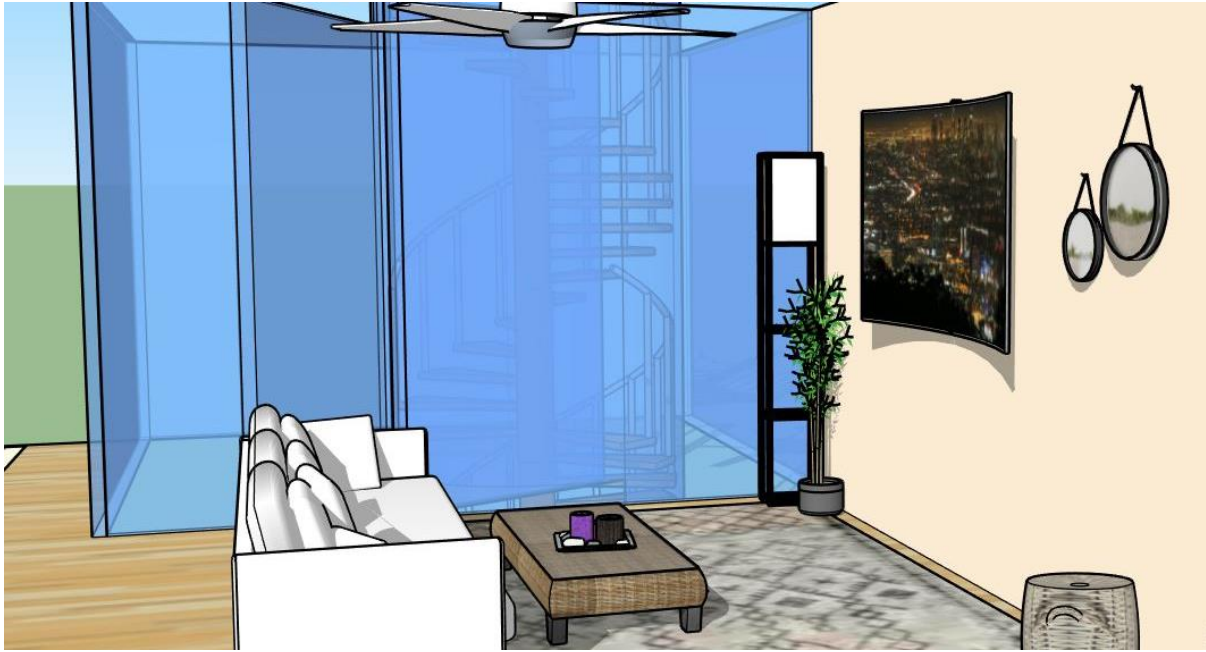
SYMBOLS LEGEND

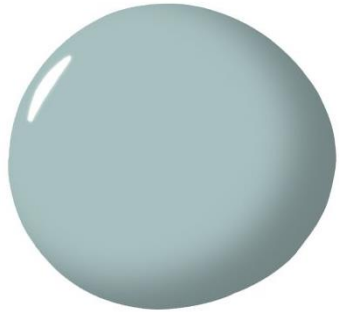
Legend

-  Duplex Outlet
-  Weather Proof Outlet
-  GFI Outlet
-  Ceiling Fan with lights
-  Recessed Light
-  Smoke Detector
-  Ceiling Fan Switch
-  Light Switch
-  Carbon Monoxide Detector
-  Switch
-  Garbage Disposal Switch
-  Light and Vent Combo



FAMILY ROOM CONCEPT BOARD





KITCHEN CONCEPT BOARD

