

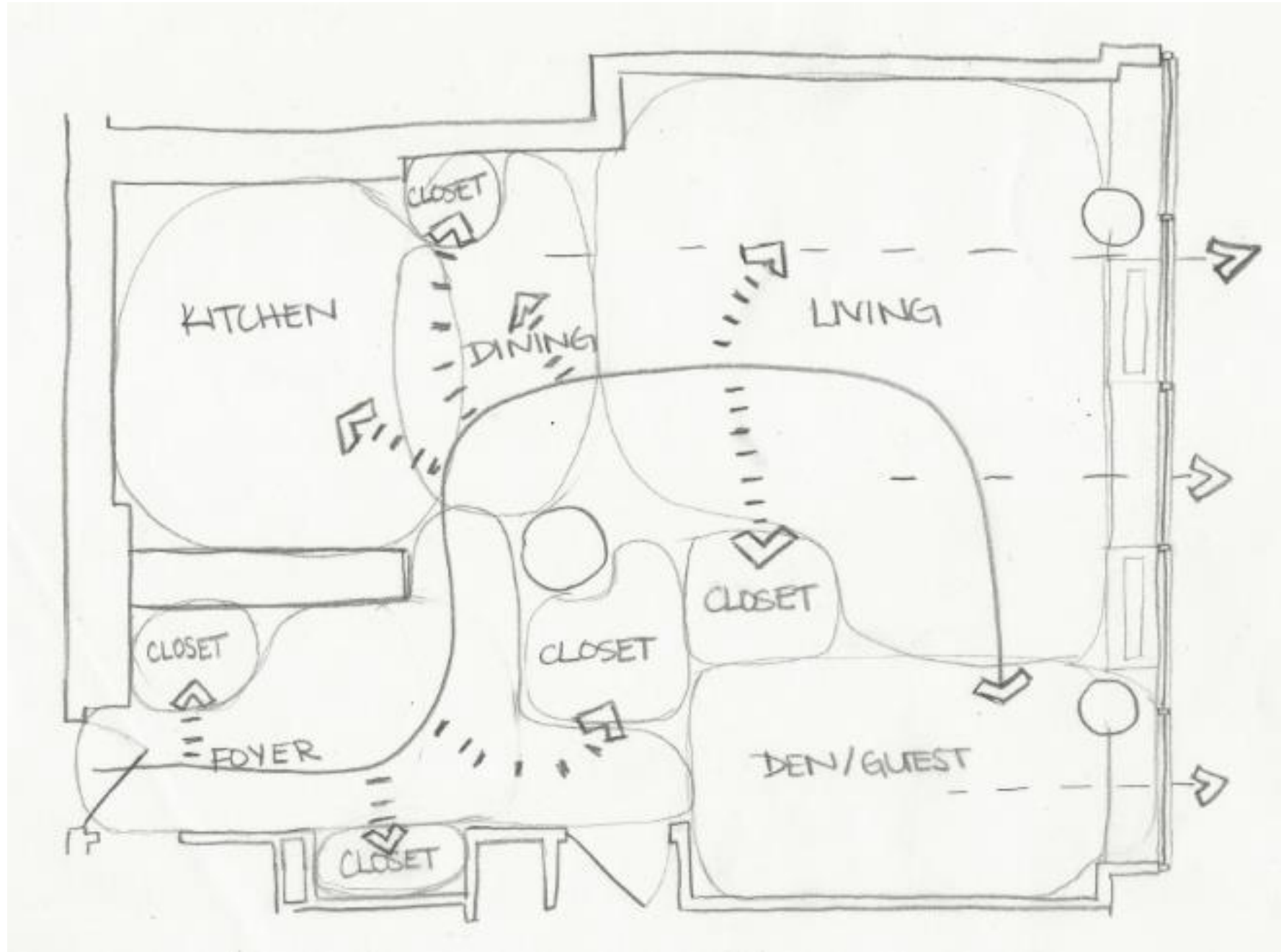
# HARBOR POINT



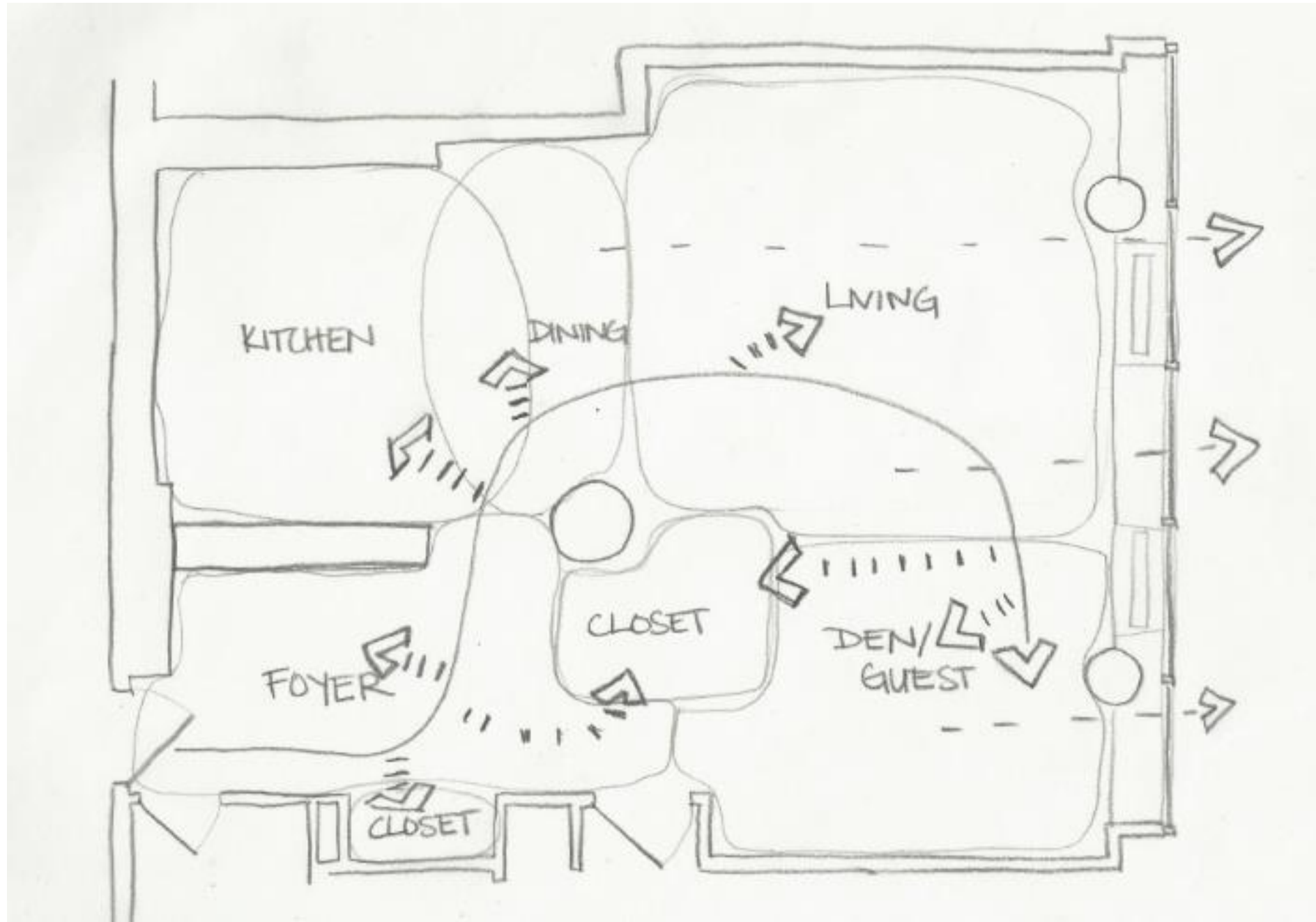
ANGIE BONK

5 BUBBLE, 5 BLOCK, 5 LOOSE, 3 PRELIMINARY FURNITURE PLANS,  
ADJACENT COUNTER SPACE, REFINED KITCHEN & KITCHEN  
CONFIGURATIONS

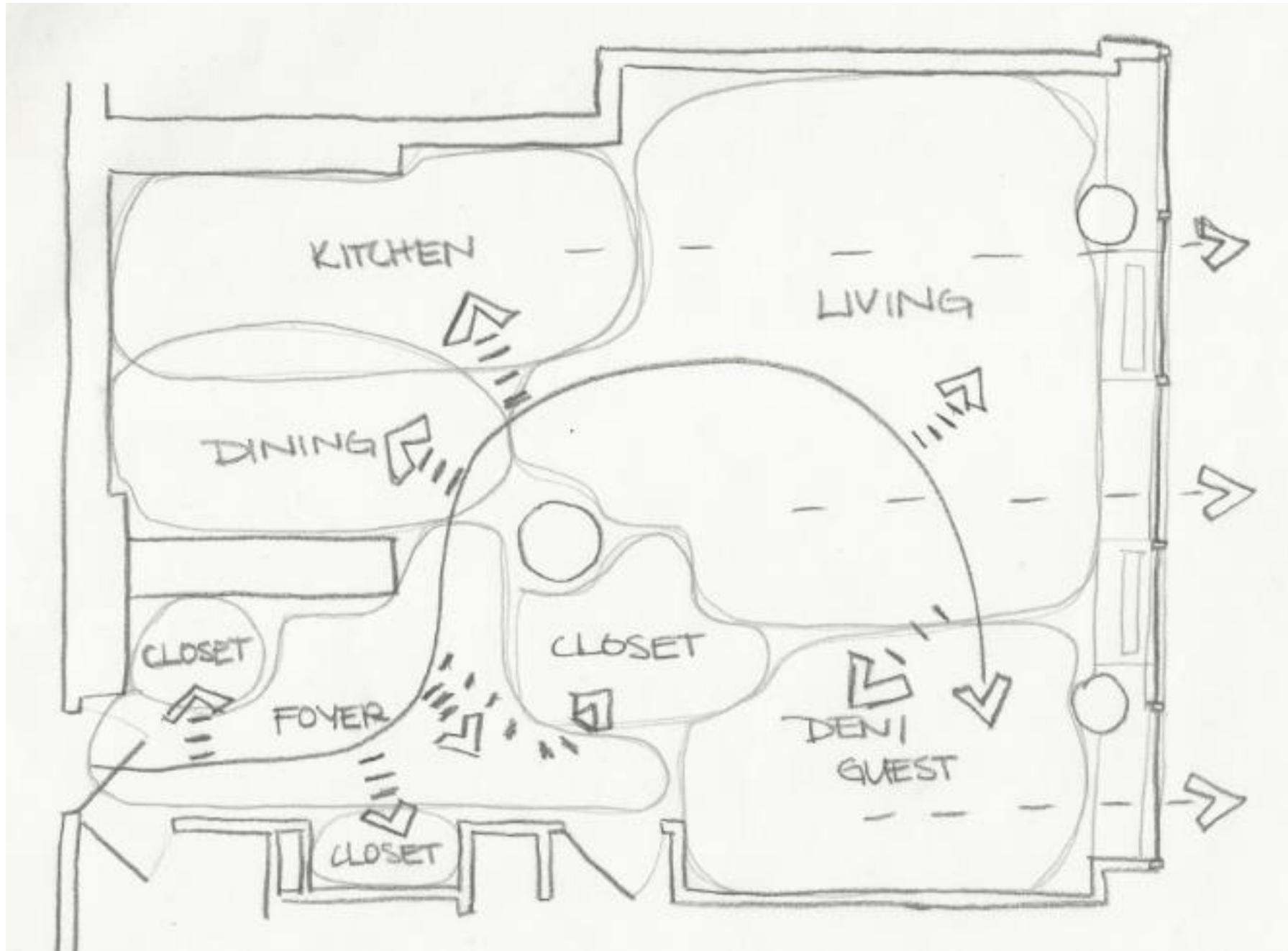
# BUBBLE DIAGRAM 1



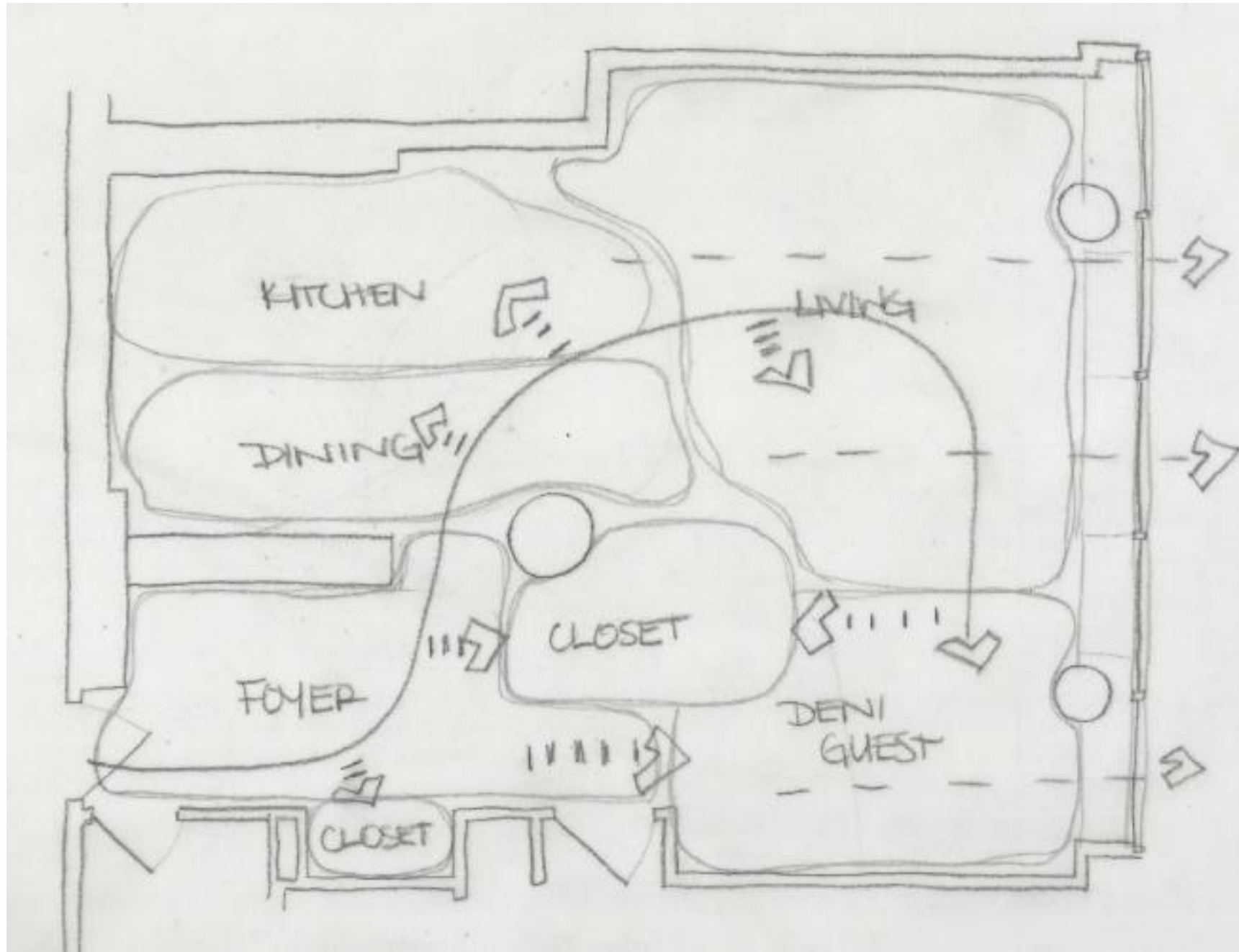
# BUBBLE DIAGRAM 2



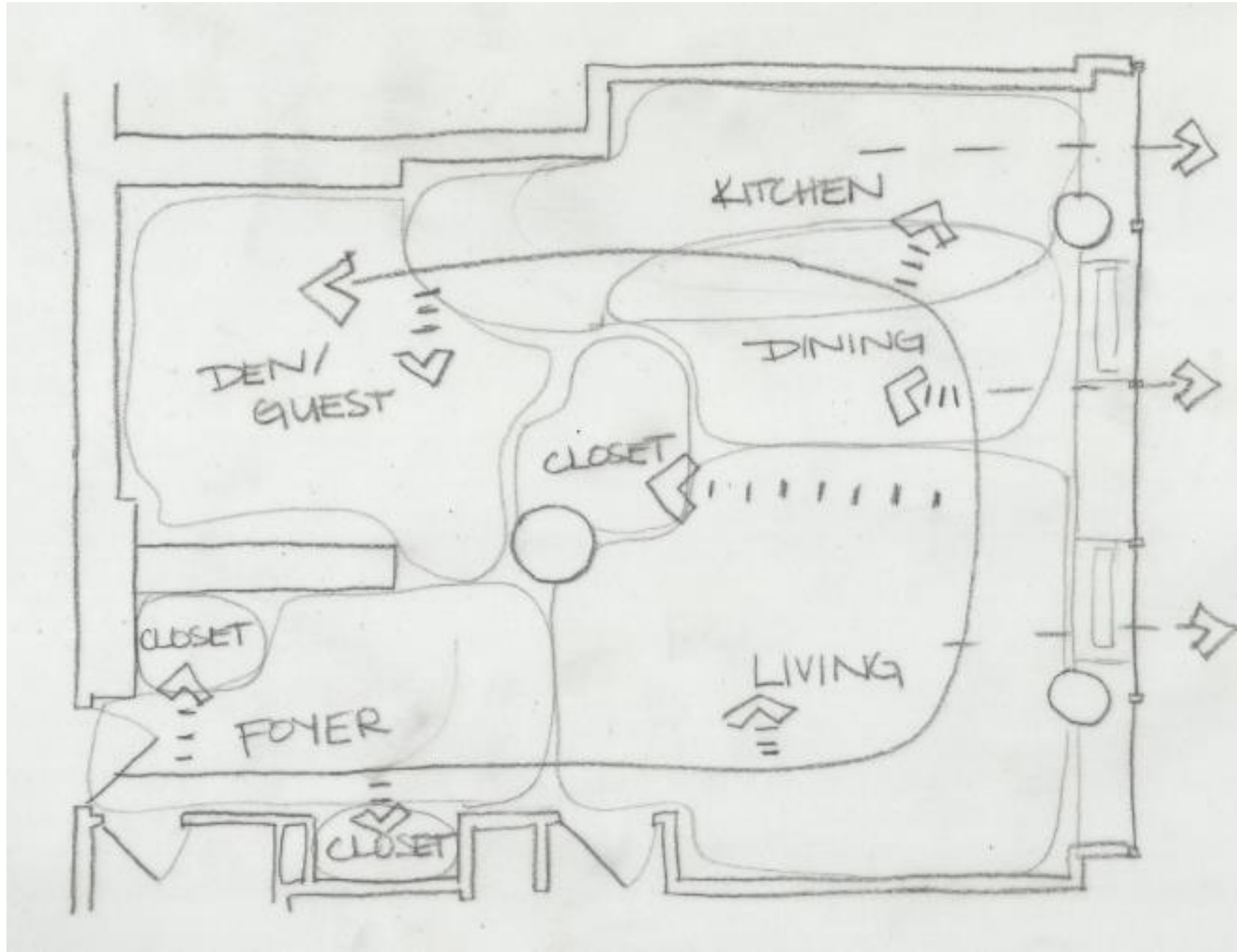
# BUBBLE DIAGRAM 3



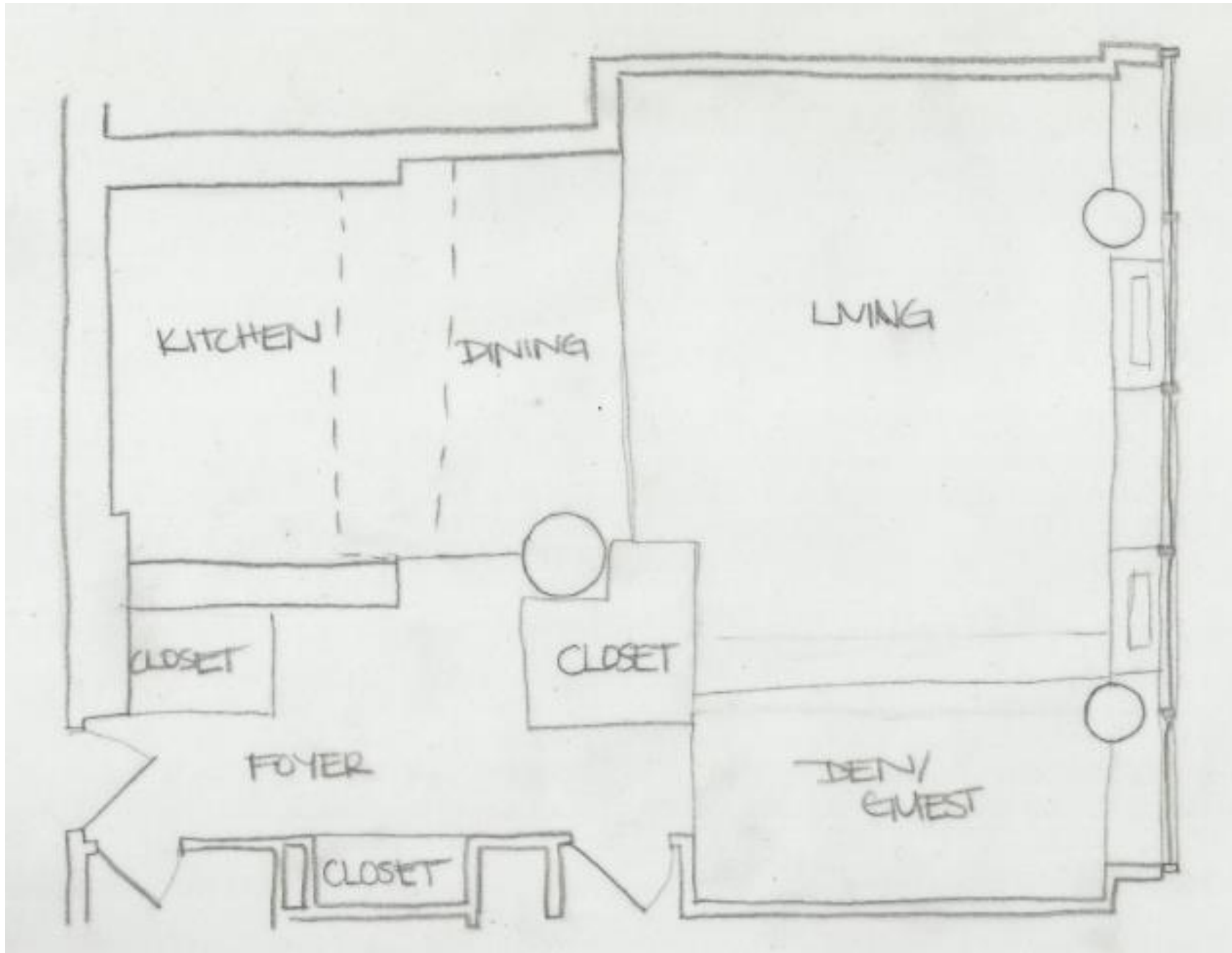
# BUBBLE DIAGRAM 4



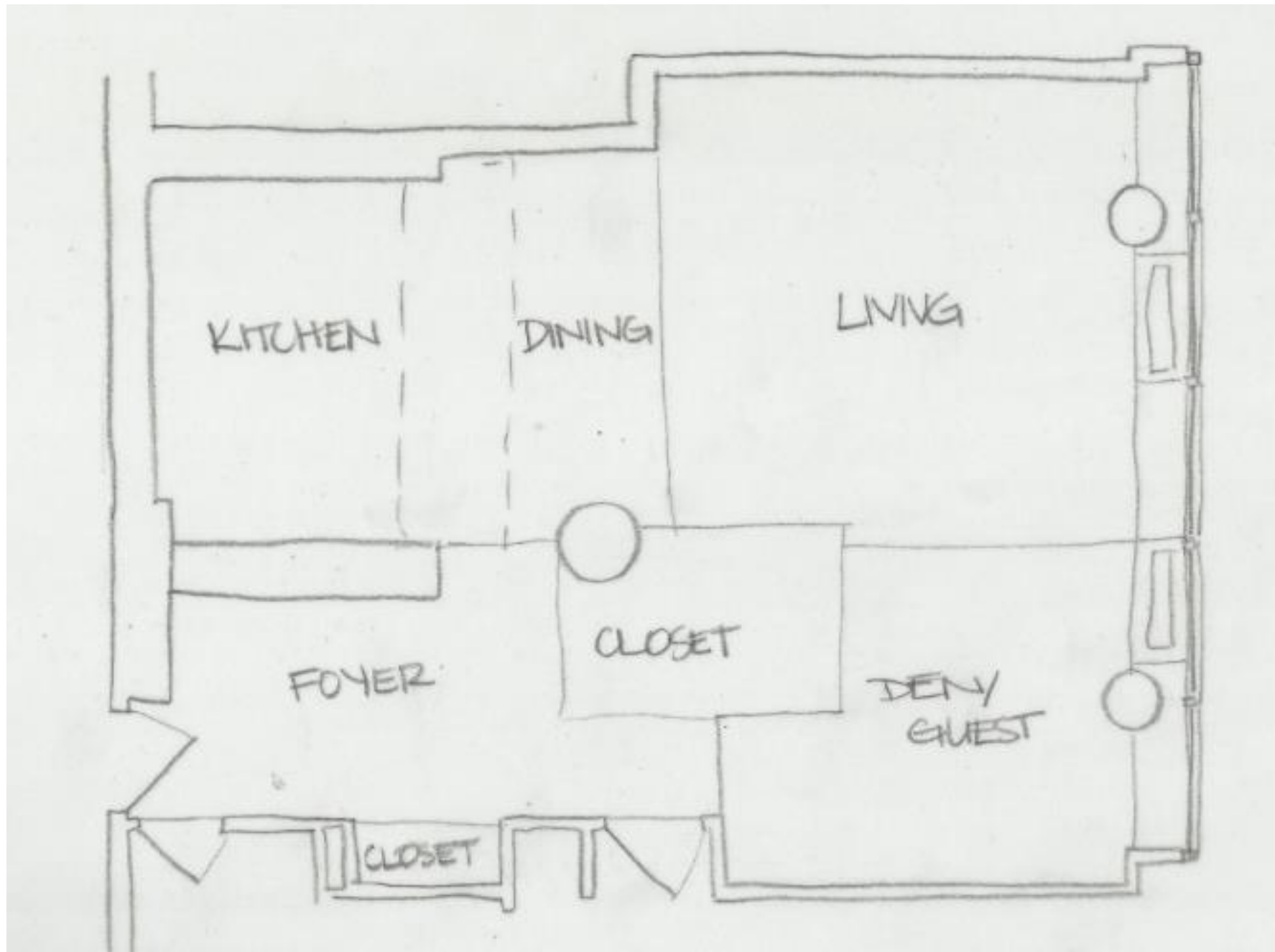
# BUBBLE DIAGRAM 5



# BLOCK DIAGRAM 1

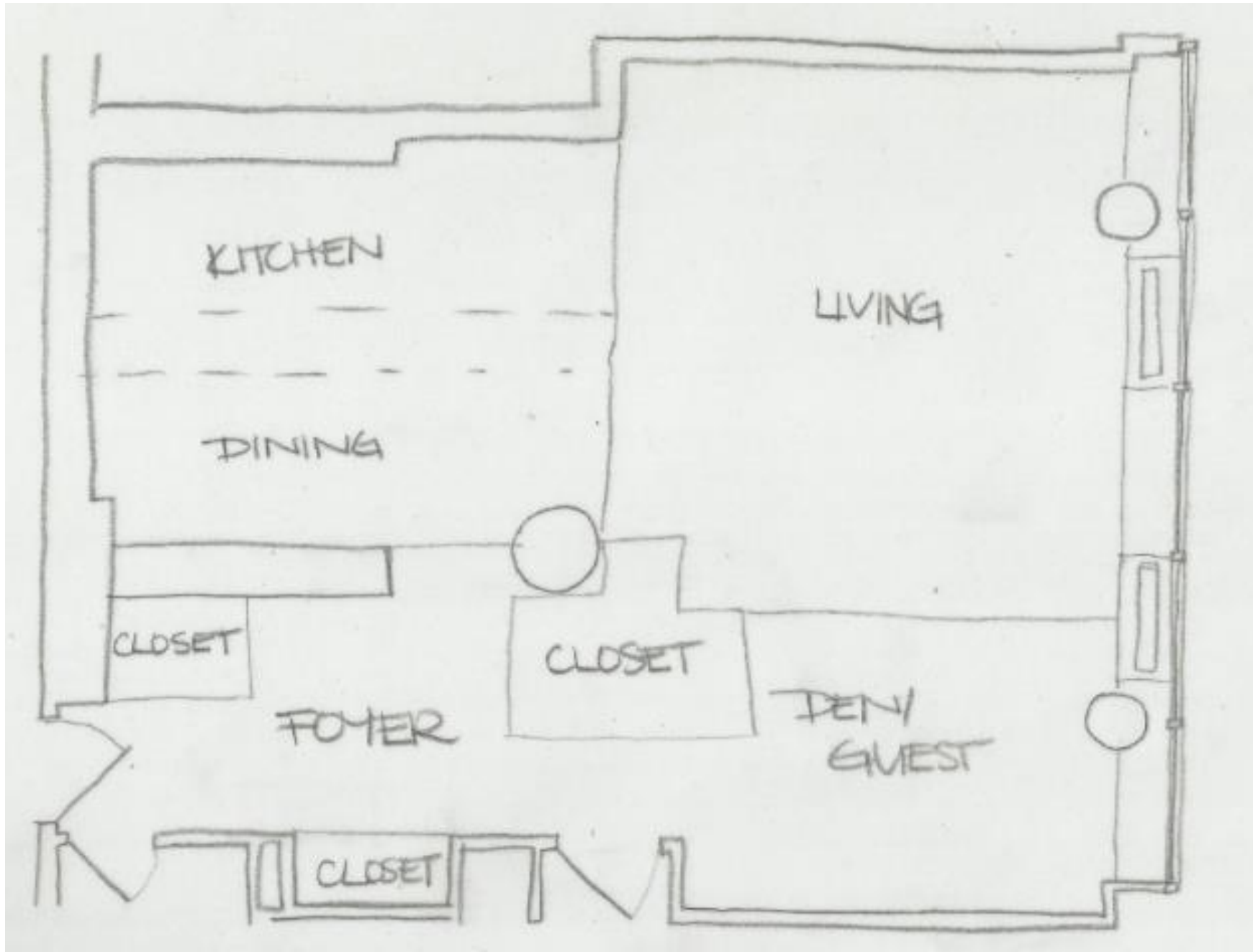


# BLOCK DIAGRAM 2

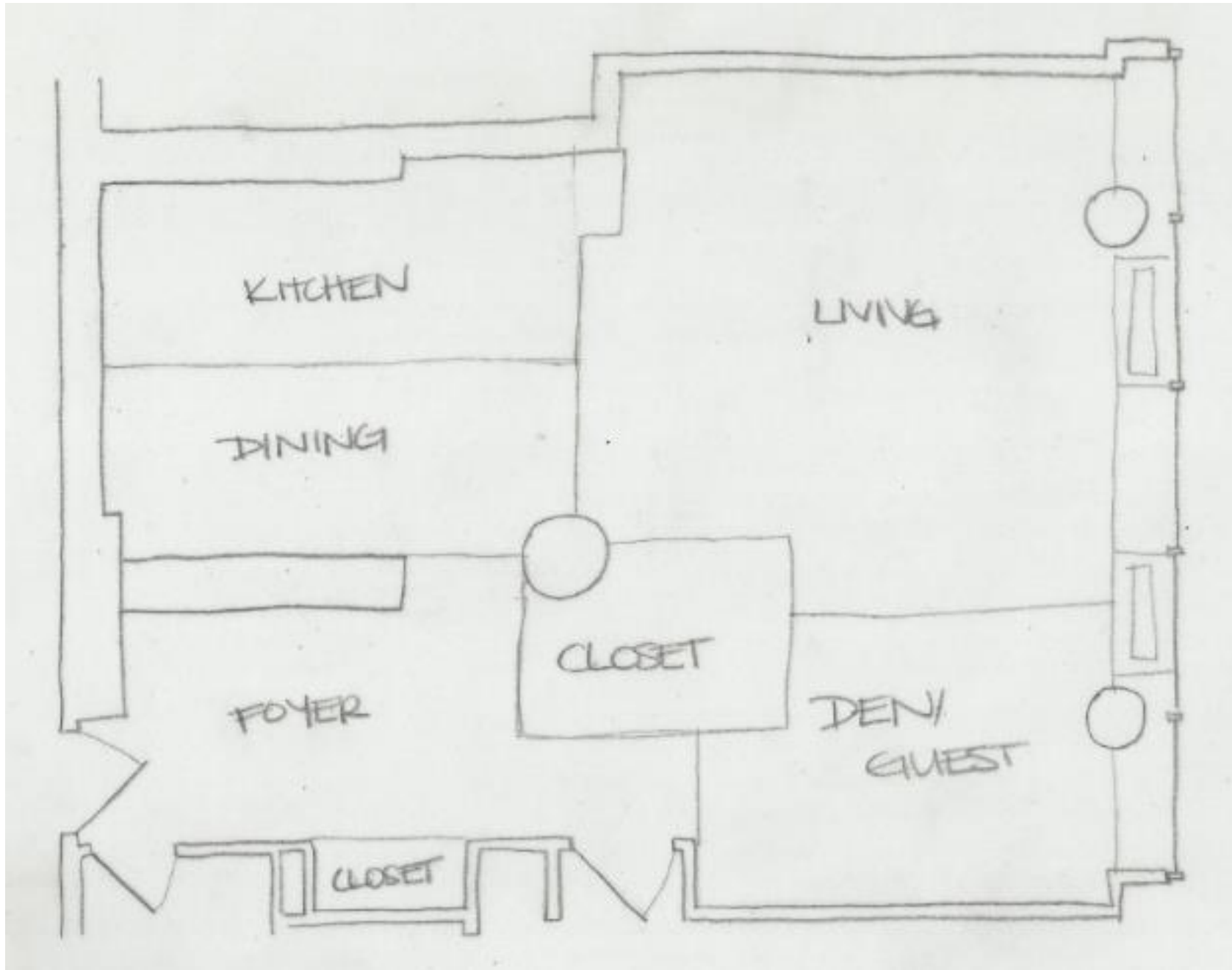




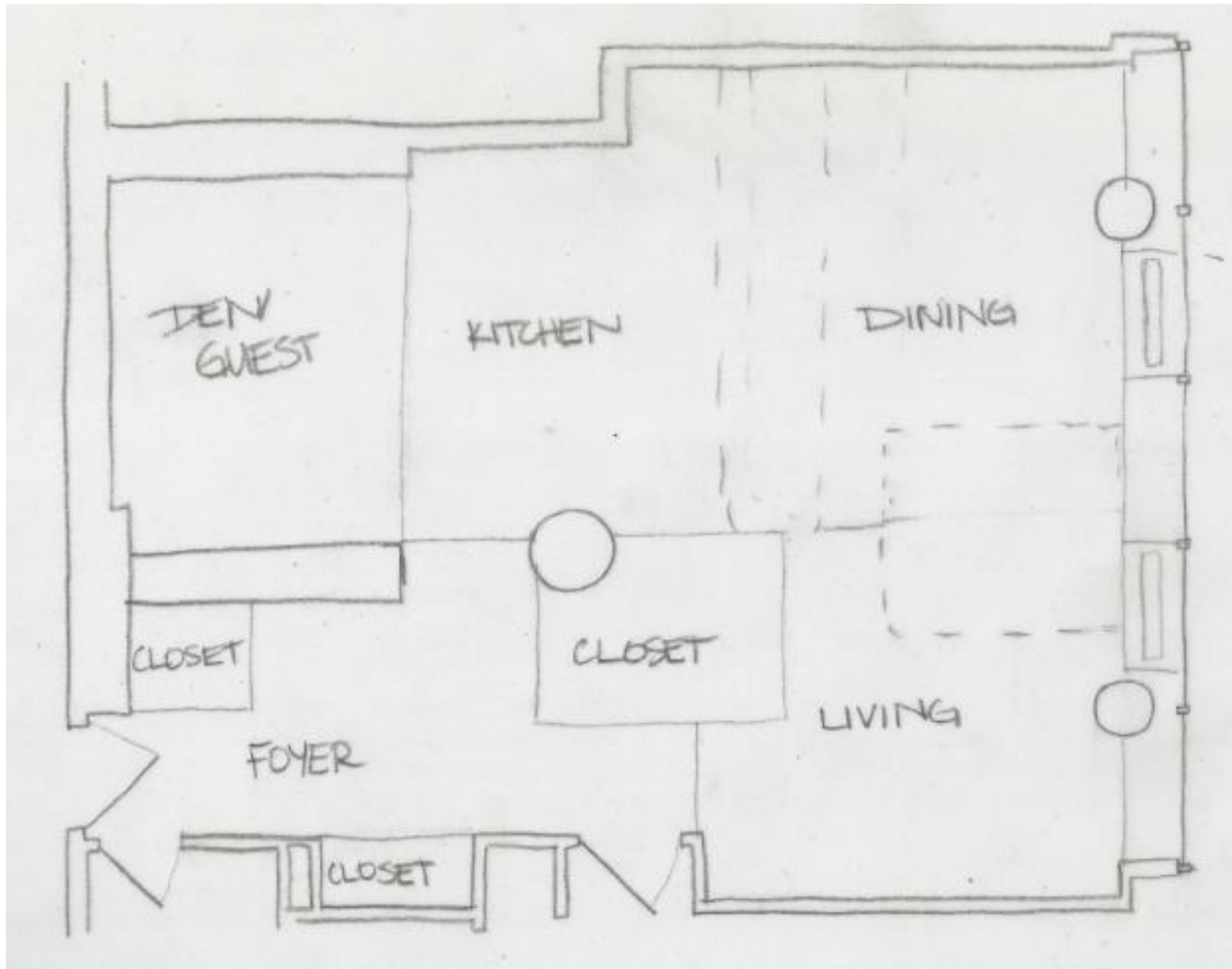
# BLOCK DIAGRAM 3



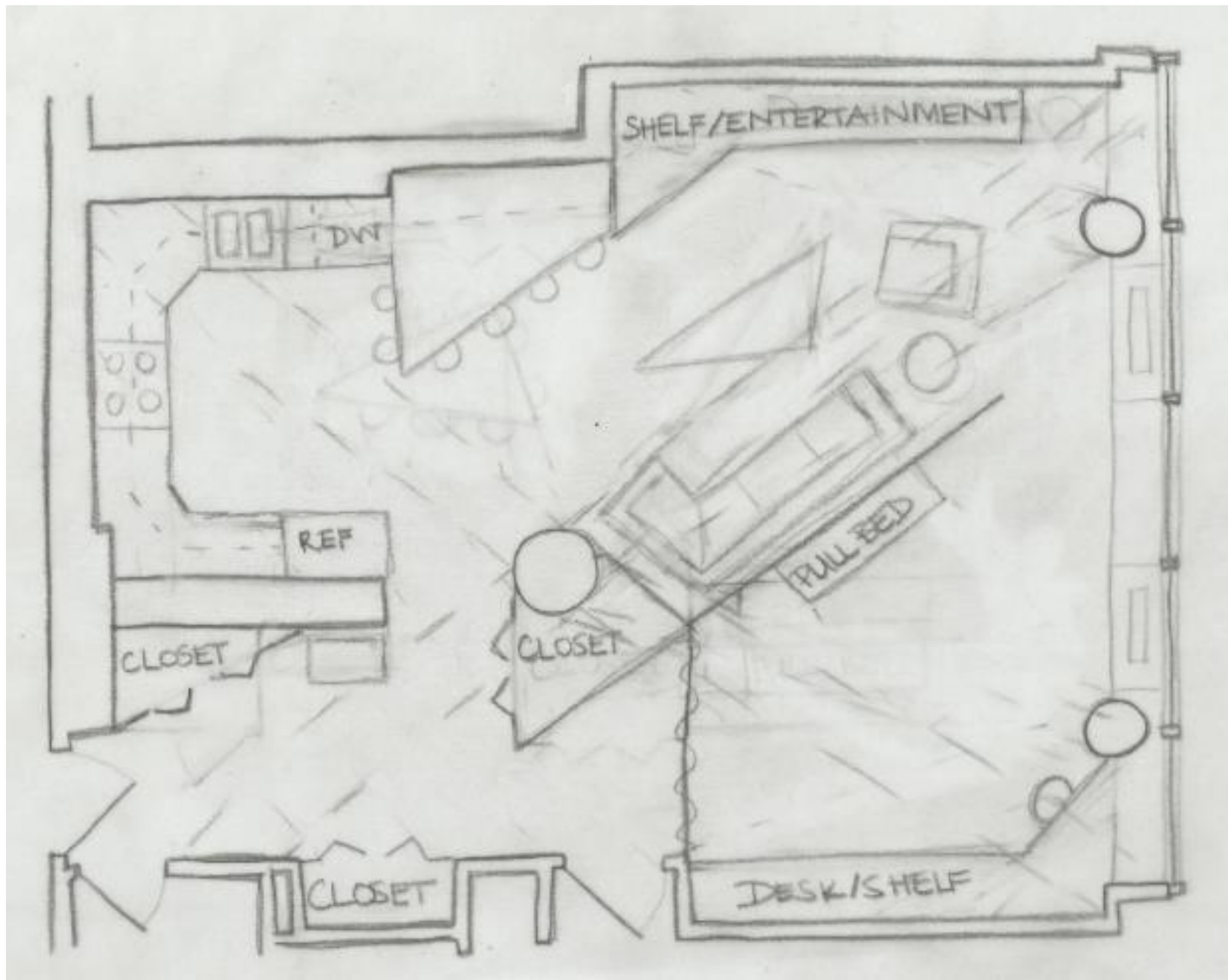
# BLOCK DIAGRAM 4



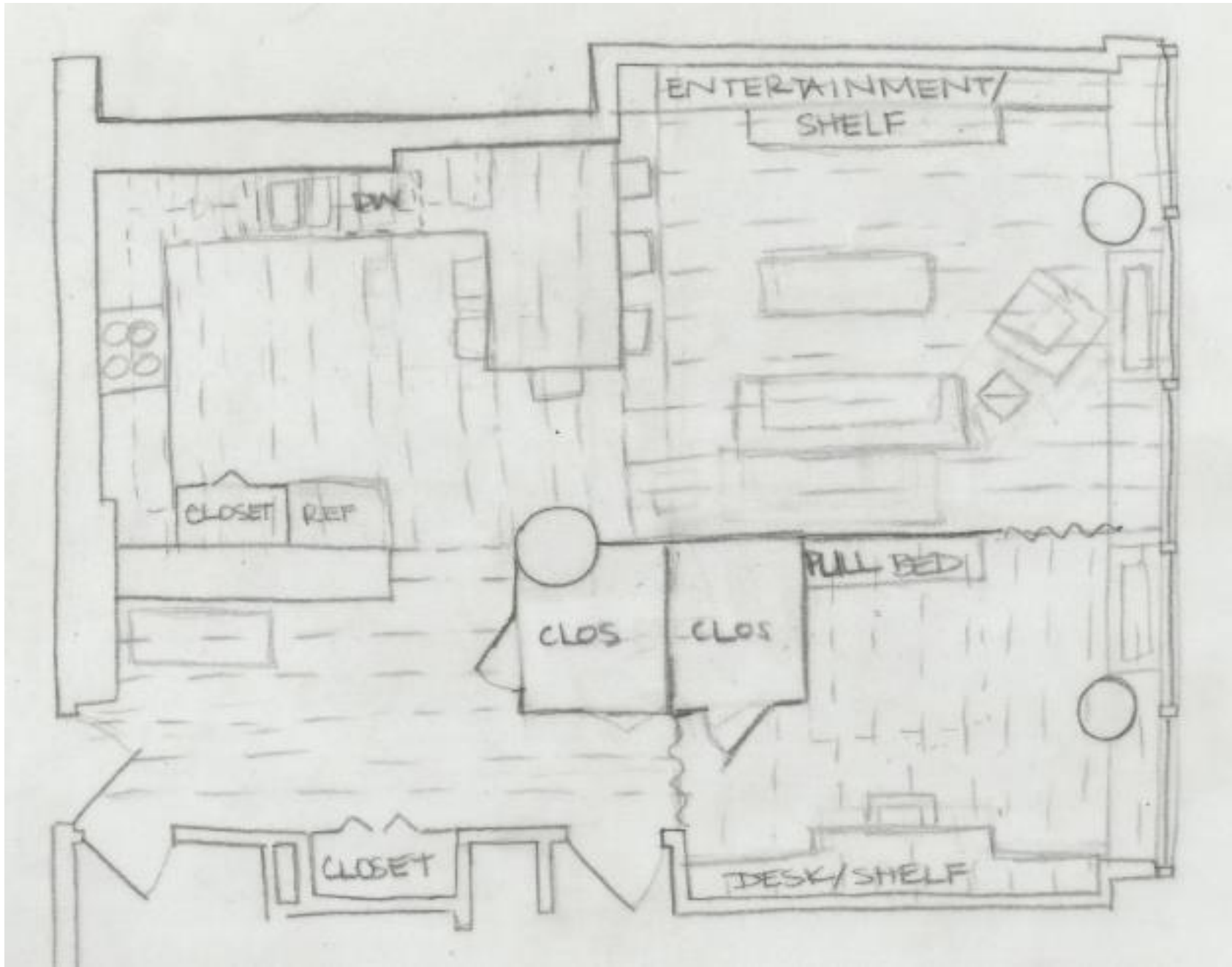
# BLOCK DIAGRAM 5



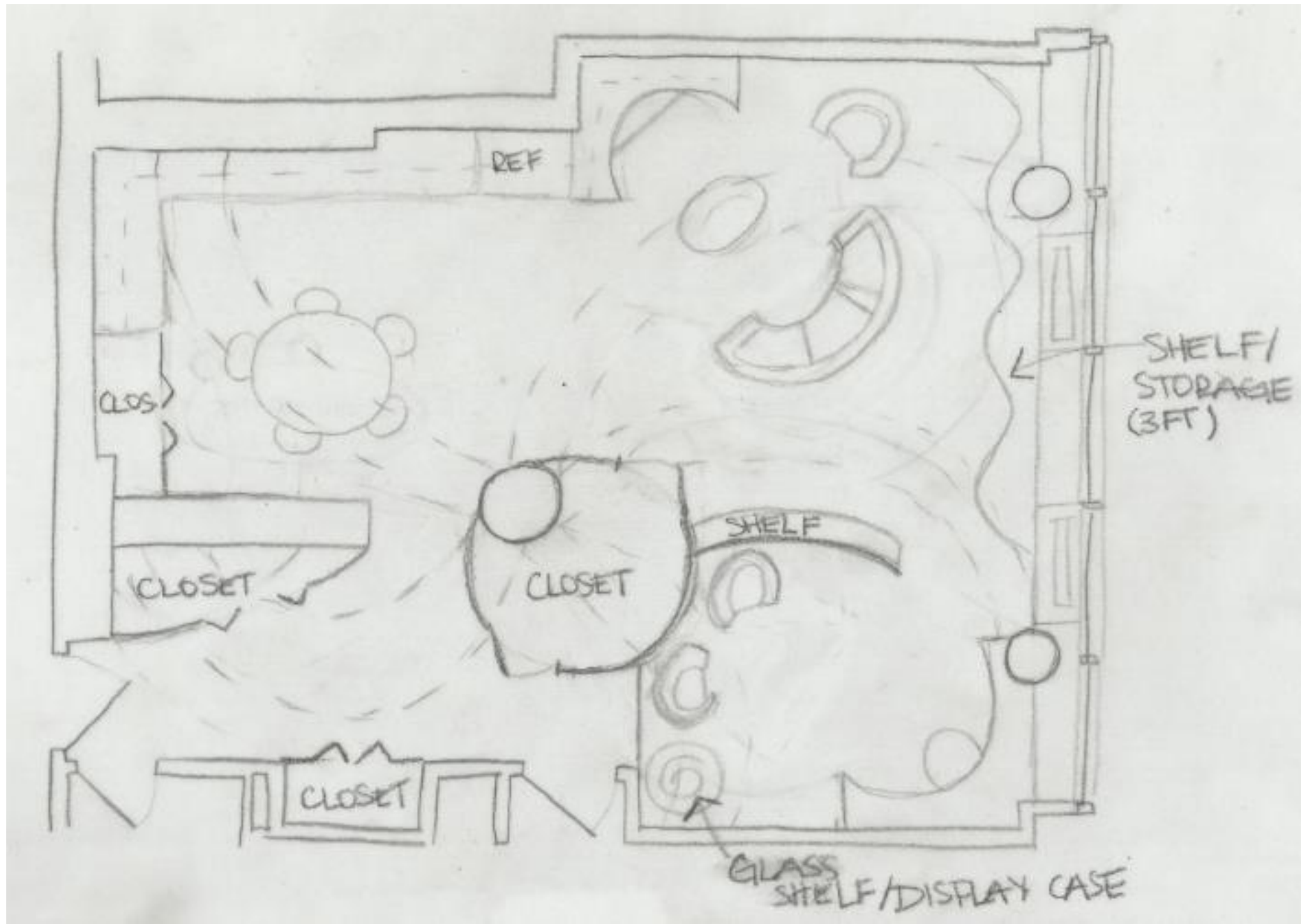
# LOOSE DIAGRAM 1



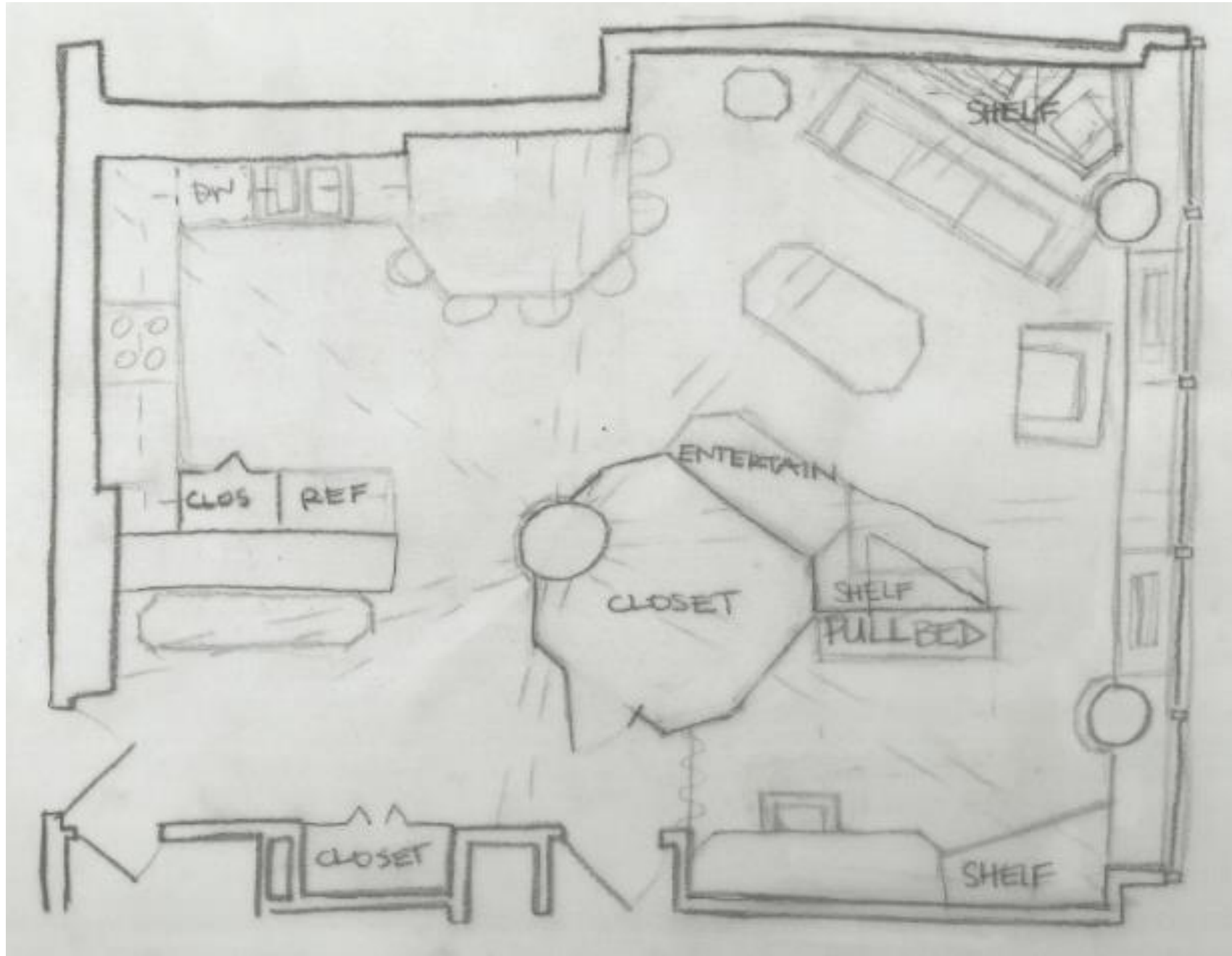
# LOOSE DIAGRAM 2



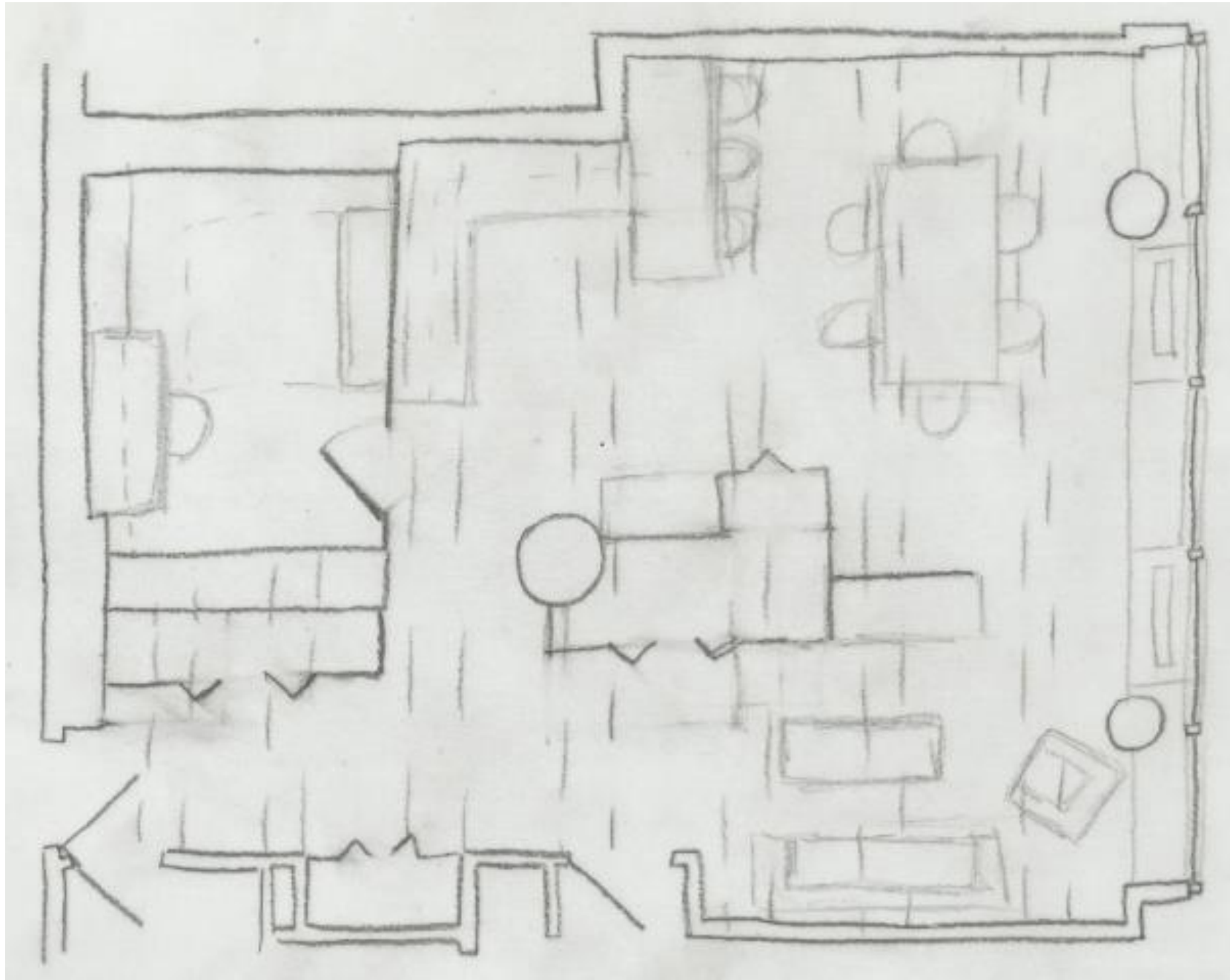
# LOOSE DIAGRAM 3



# LOOSE DIAGRAM 4

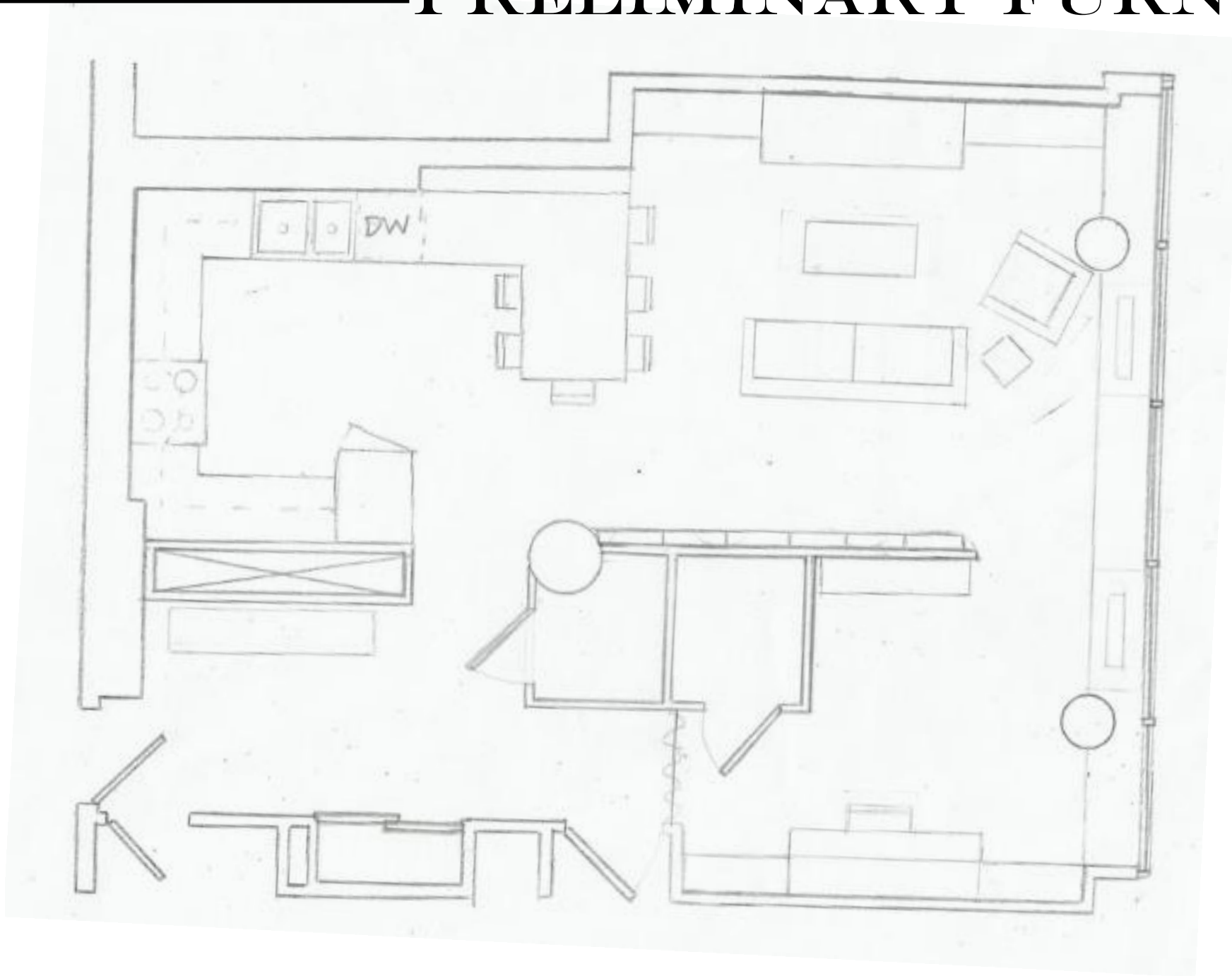


# LOOSE DIAGRAM 5

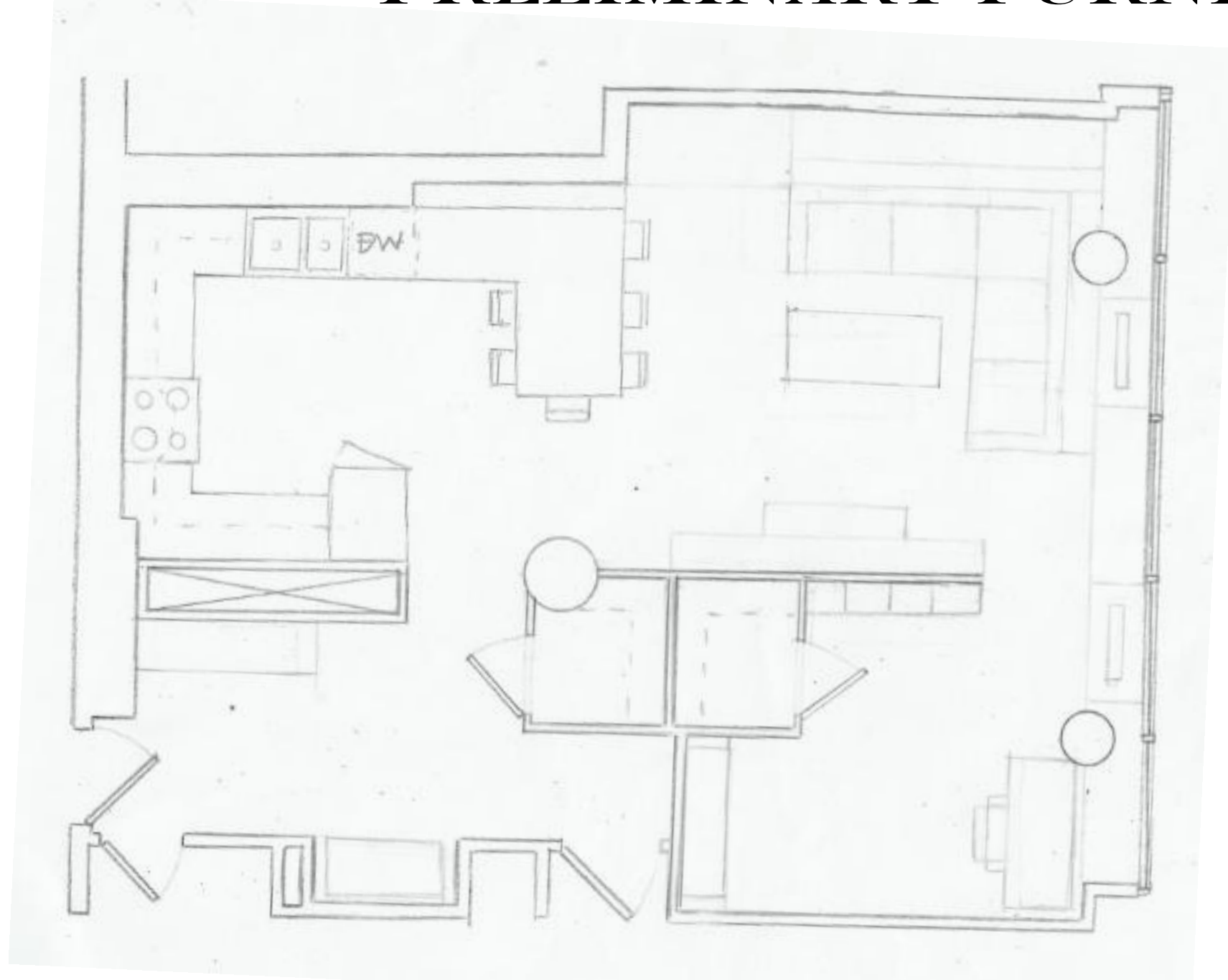




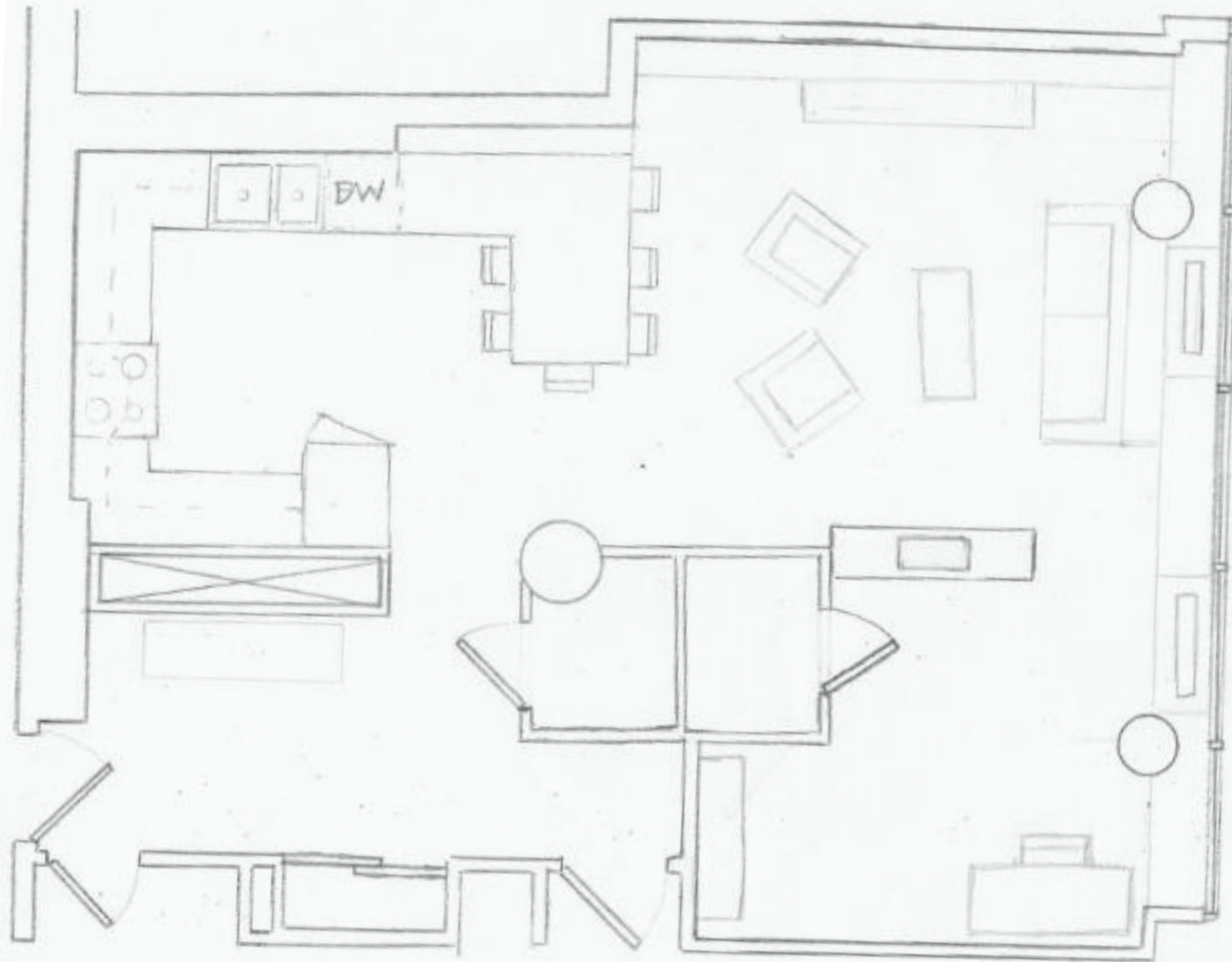
# PRELIMINARY FURNITURE 1



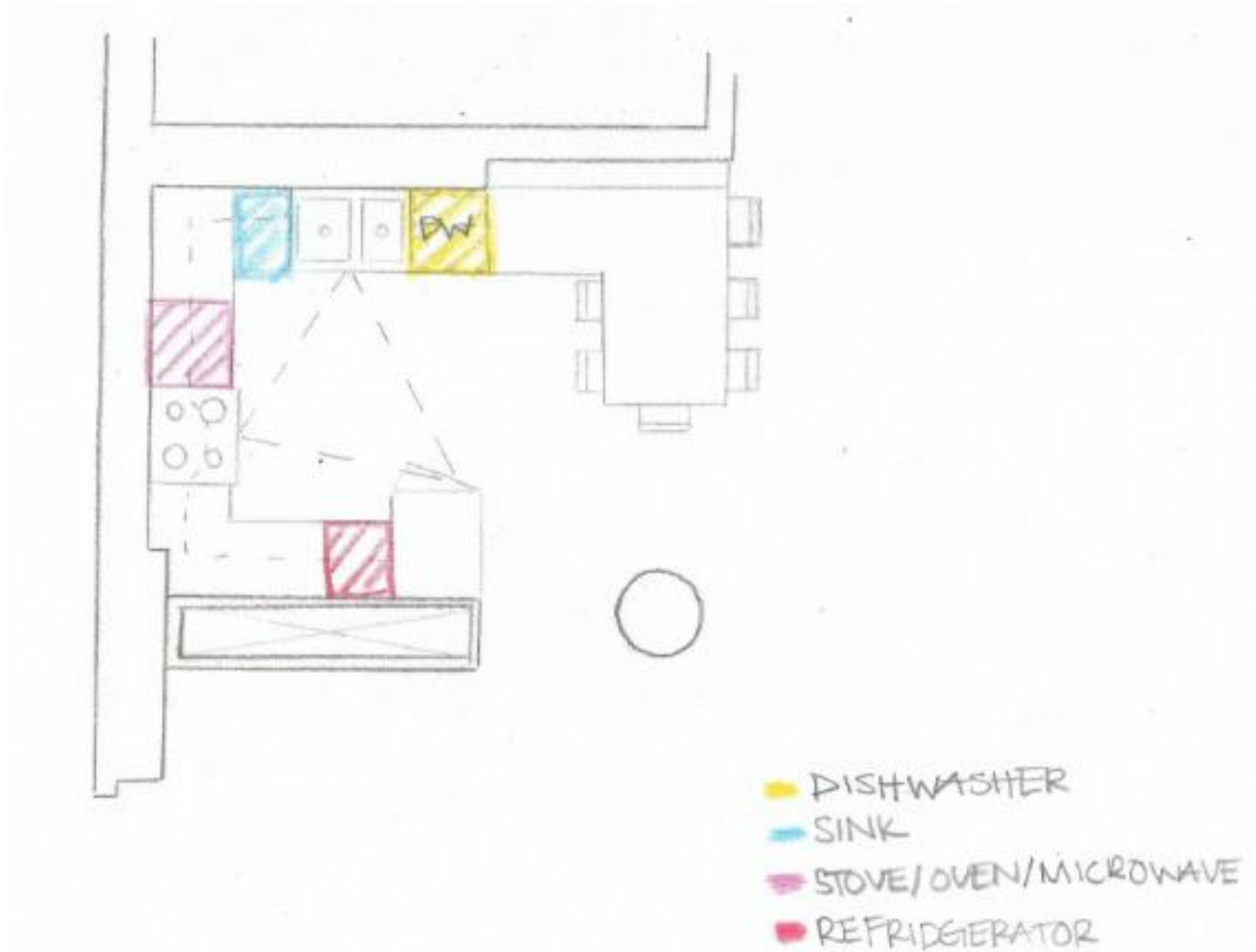
# PRELIMINARY FURNITURE 2



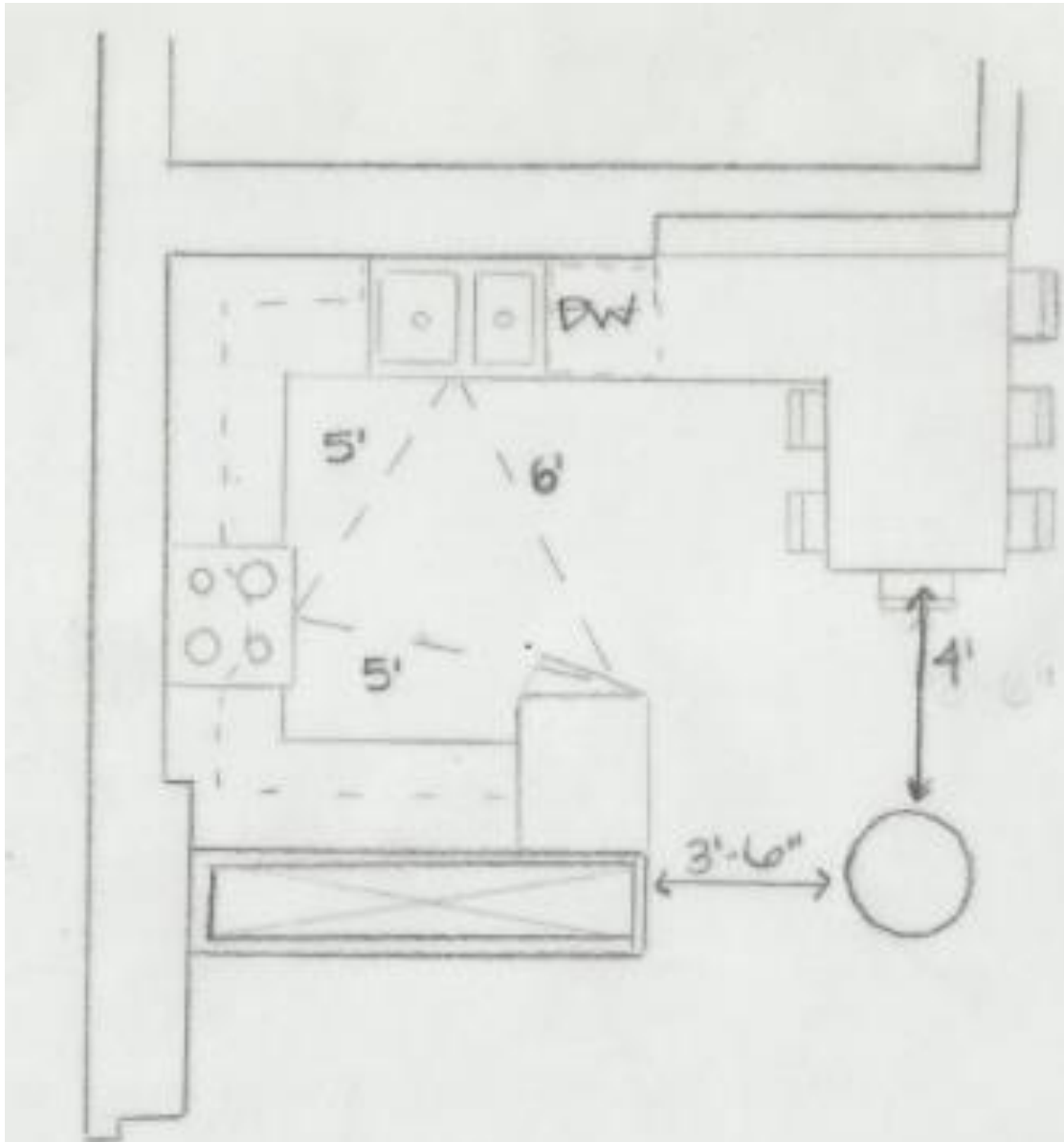
# PRELIMINARY FURNITURE 3



# ADJACENT COUNTER SPACE



# REFINED KITCHEN



## WORK TRIANGLE

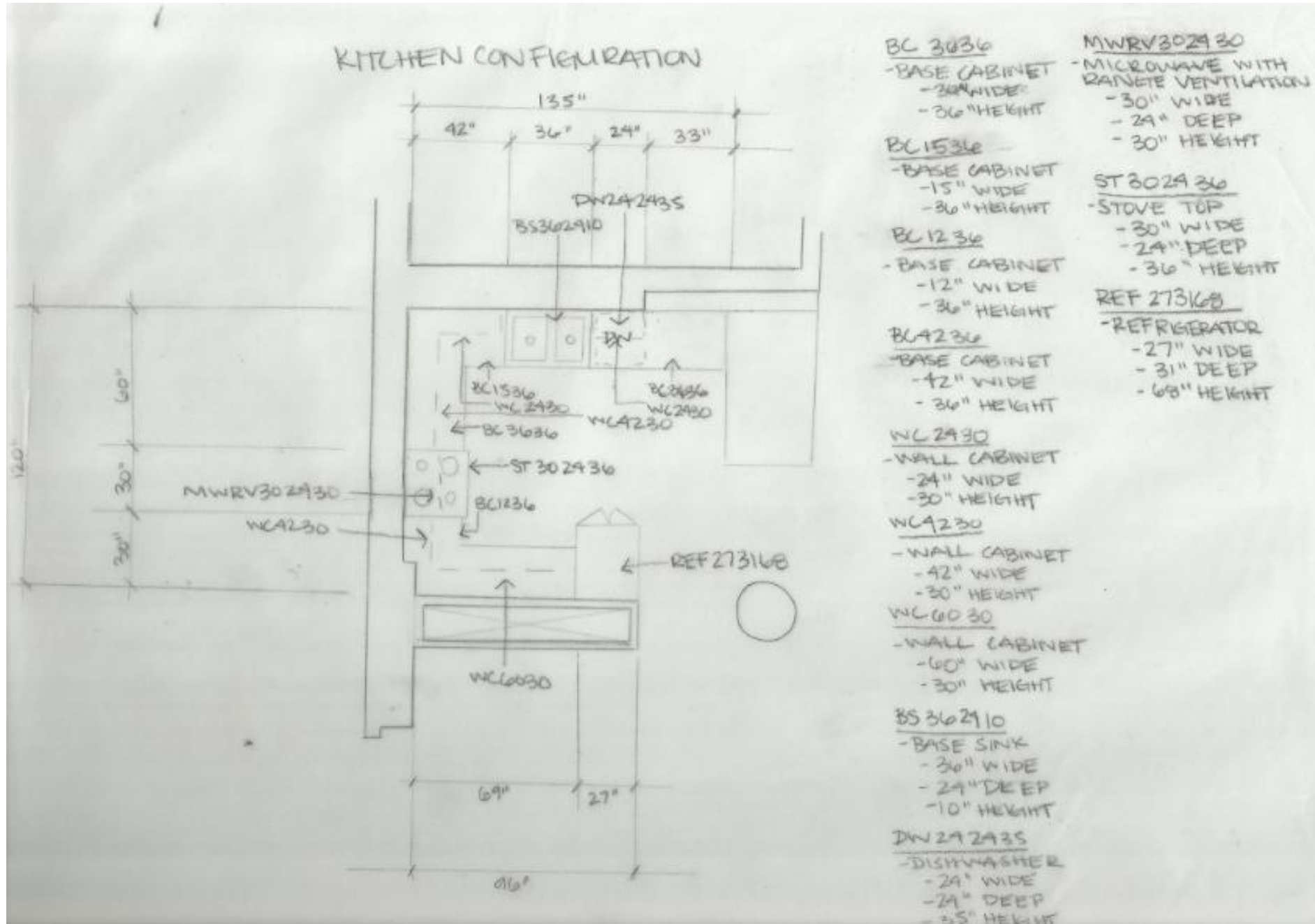
1. A → SINK TO FRIDGE  
A = 6'

2. B → STOVE TO FRIDGE  
B = 5'

3. C → SINK TO STOVE  
C = 5'

TOTAL = A + B + C  
TOTAL = 6' + 5' + 5'  
**TOTAL = 16'**

# KITCHEN CONFIGURATIONS



BC 3636  
 -BASE CABINET  
 -36" WIDE  
 -36" HEIGHT

BC 1536  
 -BASE CABINET  
 -15" WIDE  
 -36" HEIGHT

BC 1236  
 -BASE CABINET  
 -12" WIDE  
 -36" HEIGHT

BC 4236  
 -BASE CABINET  
 -42" WIDE  
 -36" HEIGHT

WC 2930  
 -WALL CABINET  
 -24" WIDE  
 -30" HEIGHT

WC 4230  
 -WALL CABINET  
 -42" WIDE  
 -30" HEIGHT

WC 6030  
 -WALL CABINET  
 -60" WIDE  
 -30" HEIGHT

BS 362910  
 -BASE SINK  
 -36" WIDE  
 -24" DEEP  
 -10" HEIGHT

DW 292935  
 -DISHWASHER  
 -24" WIDE  
 -24" DEEP  
 -35" HEIGHT

MWRV302930  
 -MICROWAVE WITH RANGE VENTILATION  
 -30" WIDE  
 -24" DEEP  
 -30" HEIGHT

ST 302936  
 -STOVE TOP  
 -30" WIDE  
 -24" DEEP  
 -36" HEIGHT

REF 273168  
 -REFRIGERATOR  
 -27" WIDE  
 -31" DEEP  
 -68" HEIGHT