



MALAYSIAN BUNGALOW

ELLYN MENKE

PROJECT OVERVIEW

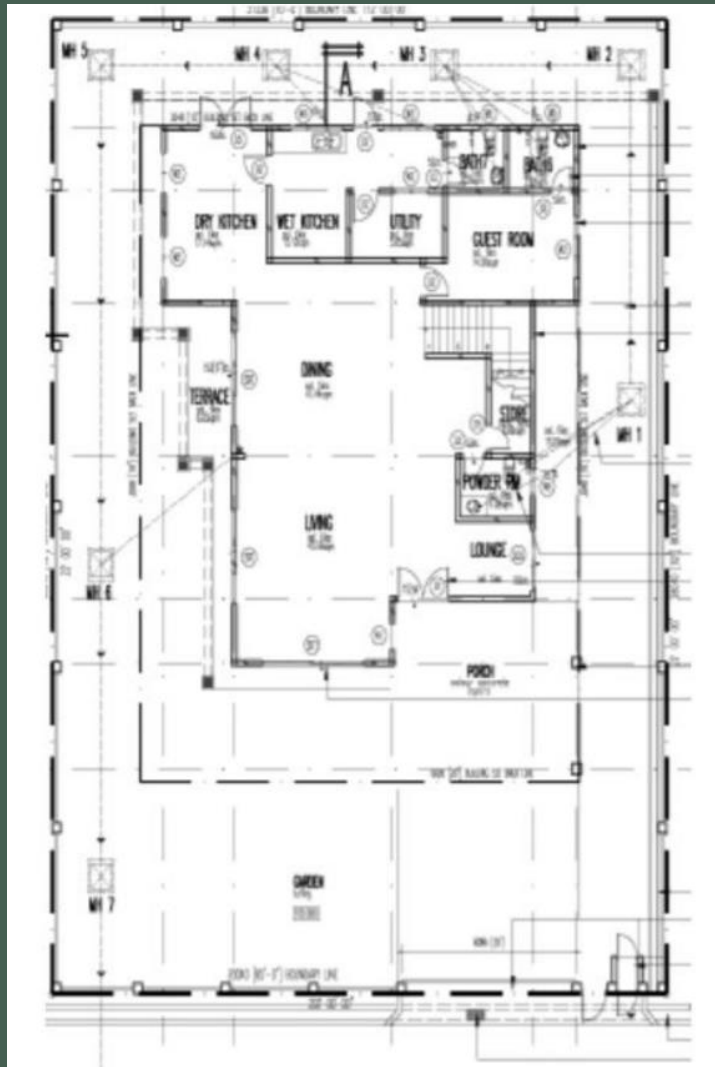
LOCATED IN PETALING JAYA, SELANGOR, MALAYSIA MAG 5 @ GRANDVILLE IS AN APPROXIMATELY 6,500 SQUARE FOOT HOME BUILT BY FAVOURITE OUTCOME SDN. BHD. THE HOME IS CURRENTLY OCCUPIED BY A FAMILY OF FIVE AND THEIR LIVE-IN MAID. THE DRY AND WET KITCHEN ARE TOO SMALL AND THERE ARE PLACEMENT ISSUES WITH CERTAIN ROOMS. THE CLIENTS WISH TO RENOVATE THE HOME TO CREATE A MORE FUNCTIONAL AND AESTHETICALLY PLEASING SPACE WITH A MODERN BALINESE STYLE.



CONCEPT STATEMENT

IN ORDER TO CREATE A MORE FUNCTIONAL SPACE FOR THE FAMILY OF FIVE A REVAMP OF THE CURRENT LAYOUT IS NECESSARY. BY USING NATURAL AND LIGHT MATERIALS THE SPACE OPENS UP TO THE OUTDOORS. CHOOSING CALM COLORS AND SIMPLE DESIGN THE SPACE BECOMES TRANQUIL AND COOL IN COMPARISON TO THE WARM MALAYSIAN WEATHER. WITH LITTLE TO NO WALLS IN THE MAIN LIVING SPACE IT OPENS UP THE GROUND LEVEL AND ALLOWS NATURAL LIGHT TO BOUNCH THROUGHOUT THE SPACE. TYING ALL THESE ELEMENTS TOGETHER WITH THE MODERN BALINESE STYLE THE HOME WILL BE A PERFECT FIT.

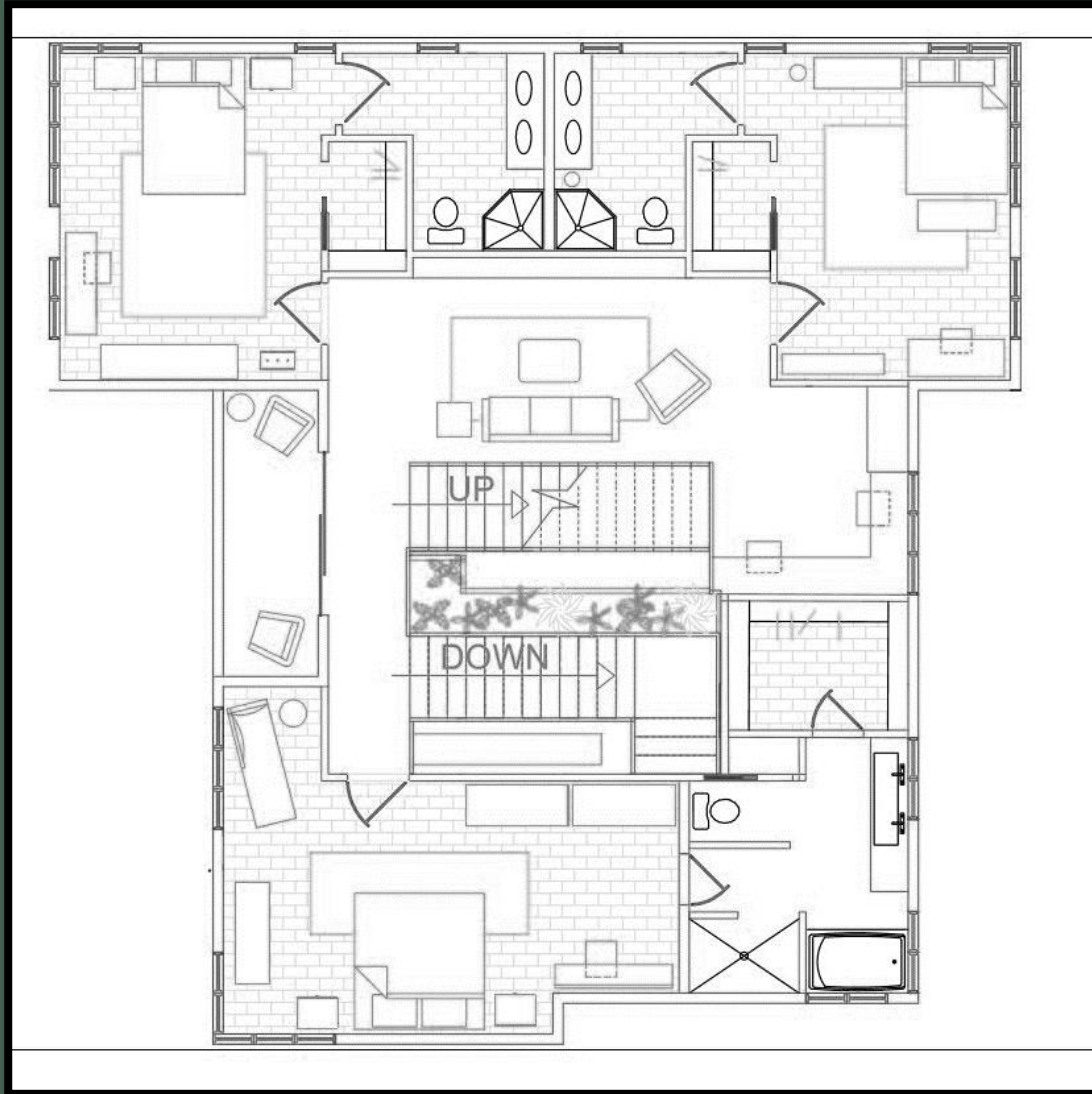
ORIGINAL FLOOR PLAN



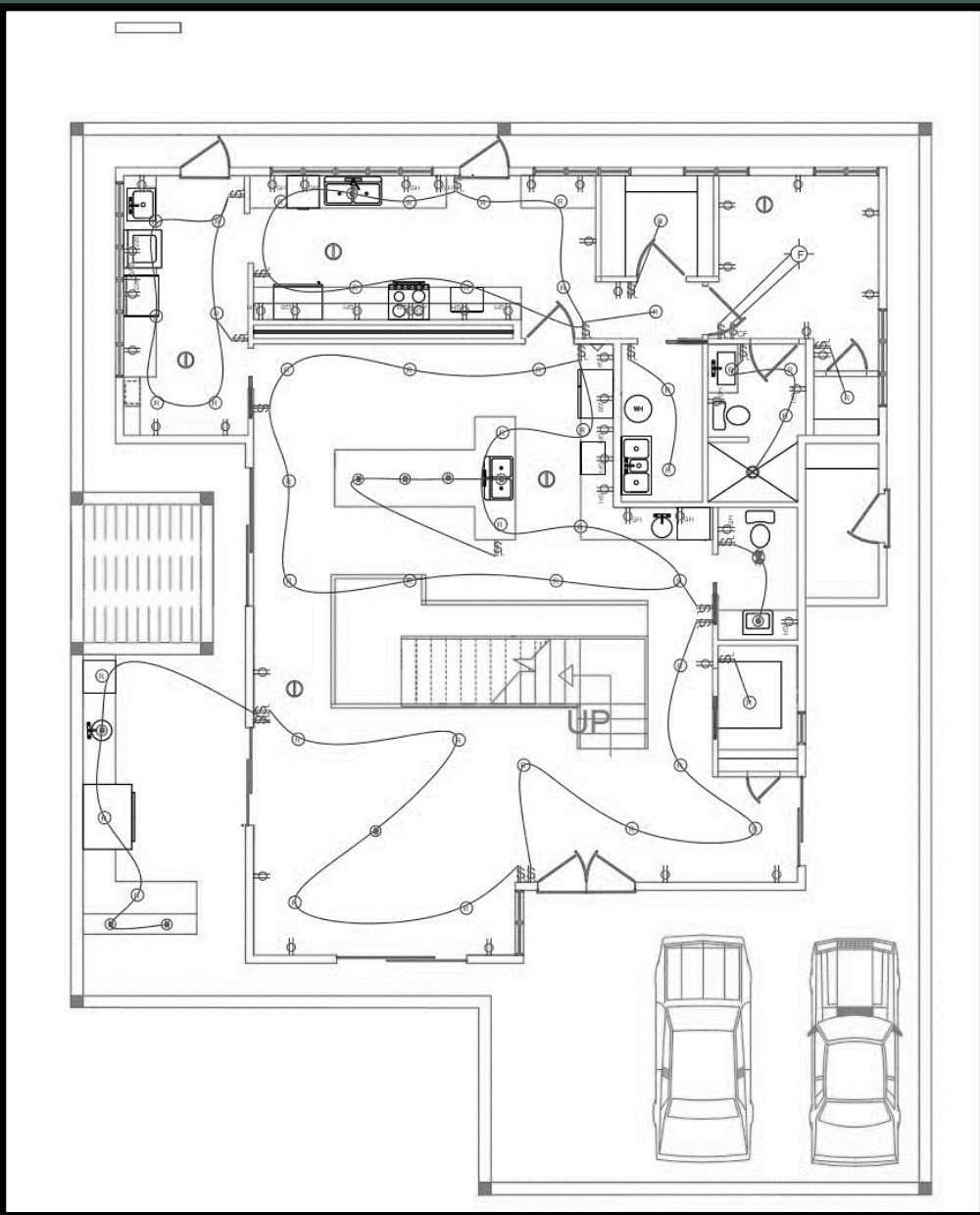


Pelan Bawha Dua












Pelan Tingkat Satu



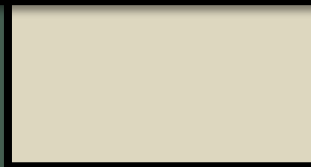
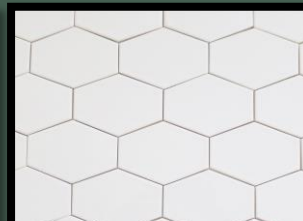
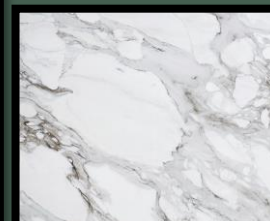
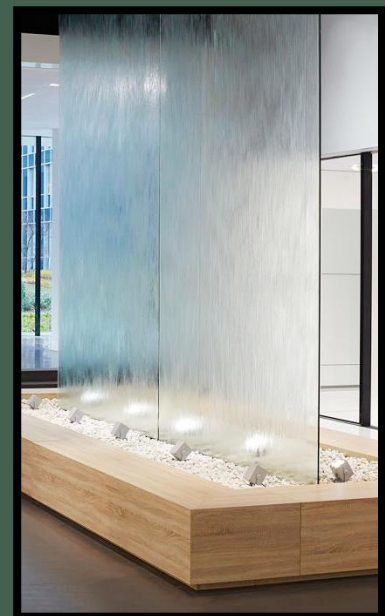
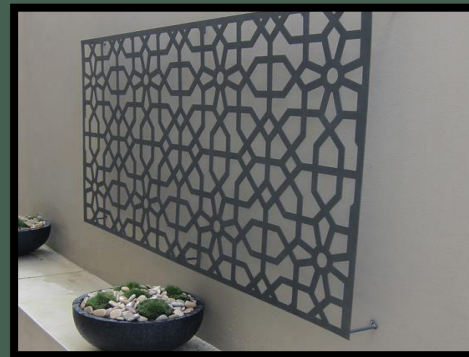
T & E P L A N



Legend

- | | |
|---|--|
|  Duplex Outlet |  Telephone Jack |
|  Pendant Light |  GFI Outlet |
|  Ceiling Fan with lights |  Gas outlet |
|  Recessed Light | |
|  Smoke Detector | |
|  Ceiling Fan Switch | |
|  Light Switch | |
|  Light and Vent Combo | |

*All duplex outlets and GFI outlets include individual switches.



KITCHEN PERSPECTIVE

