



# CONCEPTUAL BOARD

Claire Smith

## Room Schedule

ROOM NUMBER	ROOM NAME
300	FOYER
301	DEN
302	DINING
303	KITCHEN
304	LIVING

# INTERIOR ROOM FINISH SCHEDULE

ROOM	FLOOR	BASE	WALLS	CEILING	CEILING HEIGHT
FOYER	WOOD	4" WOOD TRIM	PAINT	PTD GYP BD	10'
DEN	WOOD	4" WOOD TRIM	PAINT	PTD GYP BD	10'
DINING	WOOD	4" WOOD TRIM	PAINT	PTD GYP BD & BEAMS	10'
KITCHEN	TILE	4" WOOD TRIM	PAINT	PTD GYP BD AND BEAMS	10'
LIVING	WOOD	4" WOOD TRIM	PAINT	PTD GYP	10'

# MATERIAL AND FINISHES SCHEDULE

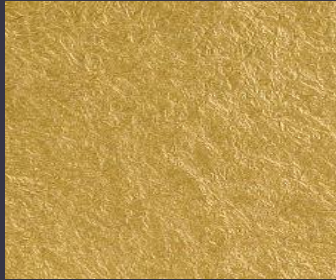
ROOM	FLOOR	BASE	WALLS	CEILING	CEILING HEIGHT	REMARKS
FOYER	BRUCE AMERICAN ORIGINAL WARM SPICE MAPLE	4" WOOD TRIM. COLOR TBA	PAINT: VALSPAR FARMONT PENTHOUSE STONE	PTD GYPM BD VALSPAR CHEF WHITE	10'	
DEN	BRUCE AMERICAN ORIGINAL WARM SPICE MAPLE	4" WOOD TRIM. COLOR TBA	PAINT: VALSPAR FIELD OF PINES	PTD GYPM BD VALSPAR CHEF WHITE	10'	
DINING	BRUCE AMERICAN ORIGINAL WARM SPICE MAPLE	4" WOOD TRIM. COLOR TBA	PAINT: VALSPAR FARMONT PENTHOUSE STONE	PTD GYPM BD VALSPAR CHEF WHITE W/ BEAMS	10'	BEAMS: WARM SPICE MAPLE 12" WIDE
KITCHEN	SAHARA BEIGE MARBLE TILE	4" WOOD TRIM. COLOR TBA	PAINT: VALSPAR FARMONT PENTHOUSE STONE	WOOD CEILING: BRUCE AMERICAN WARM SPICE MAPLE W/ BEAMS	10'	BEAMS: WARM SPICE MAPLE 12" WIDE
LIVING	BRUCE AMERICAN ORIGINAL WARM SPICE MAPLE	4" WOOD TRIM. COLOR TBA	PAINT: VALSPAR FARMONT PENTHOUSE STONE	PTD GYPM BD VALSPAR CHEF WHITE	10'	

ROOM	MARK	MATERIAL/FINISH	MANUFACTURER	COLOR/CATALOG #	REMARKS
300, 301, 302, 304	WF	WOOD FLOOR	HOME DEPOT	HAND SCRAPE MAPLE SPICE	
300, 302, 303, 304	PT1	PAINT	VALSPAR	FARMONT PENTHOUSE STONE	
301	PT2	PAINT	VALSPAR	FIELD OF PINES	
303	TL	TILE	MOSAIC TILE DIRECT	SAHARA BEIGE 12X12	
303	BC	BASE CAB	LEEDS	FULL HEIGHT BC IN STEEL	
303	WC	WALL CAB	LEEDS	FULL HEIGHT WALL CAB IN STEEL	
303	BS	BACK SPLASH	CARRARA	POLISHED MARBLE SUB	
<b>303</b>	<b>CT</b>	<b>COUNTER TOP</b>	<b>MOSAIC TILE DIRECT</b>	<b>WHITE ON GRAY MARB</b>	

# COLOR SCHEME



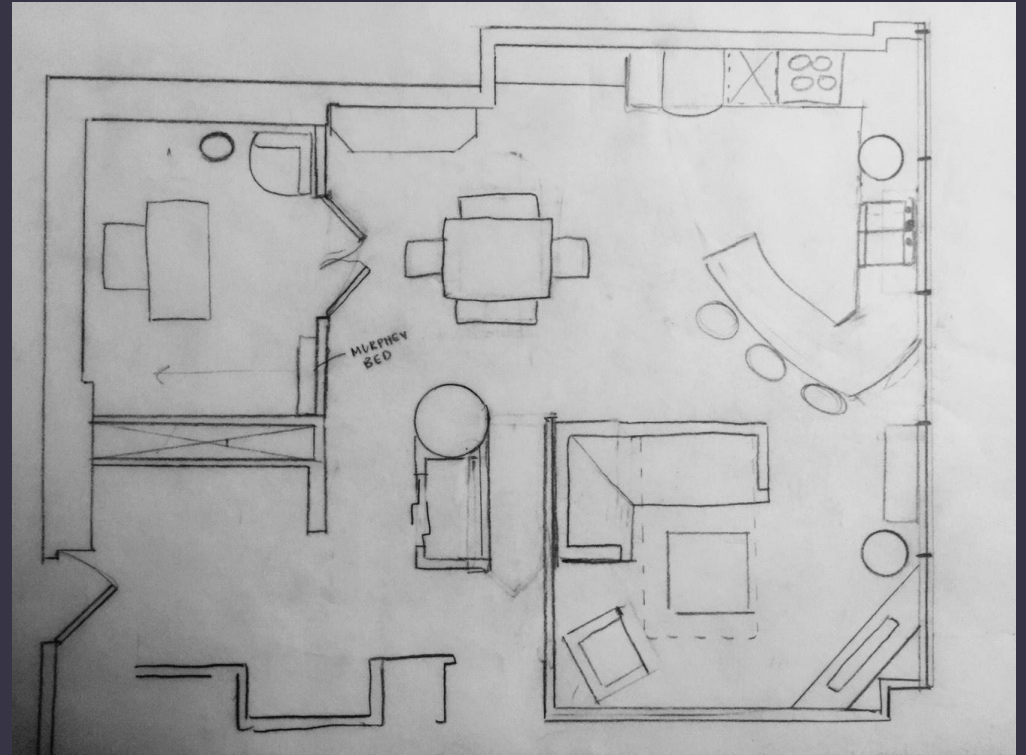
Blueish/Gray



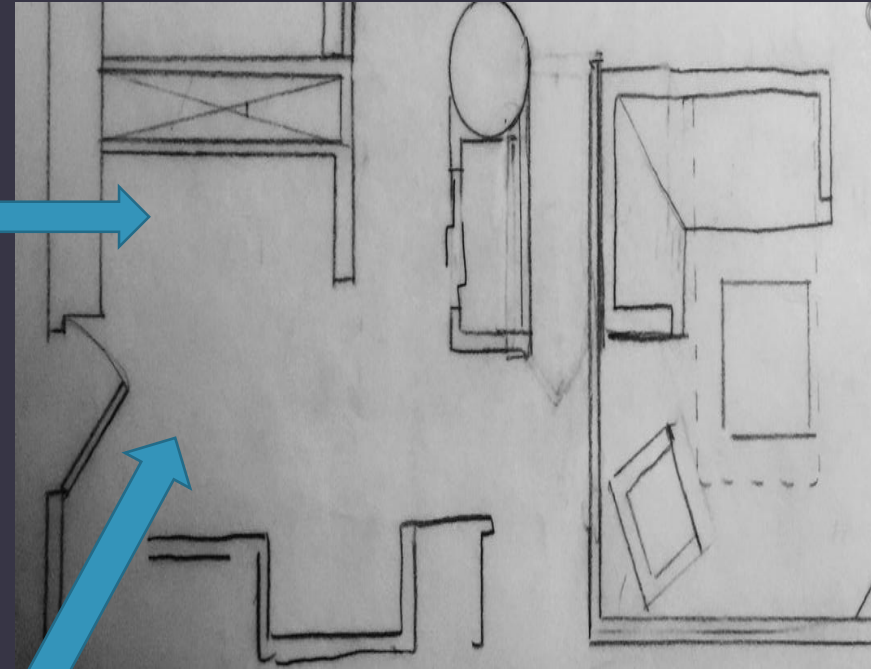
orange/gold



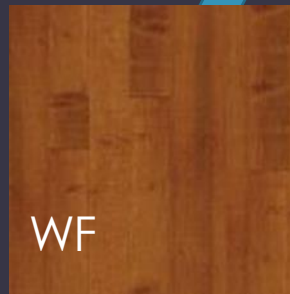
champagne  
white



# FOYER INSERTS



FLOORING: BRUCE AMERICAN ORIGINAL WARM SPICE MAPLE (HOME DEPOT)



WF

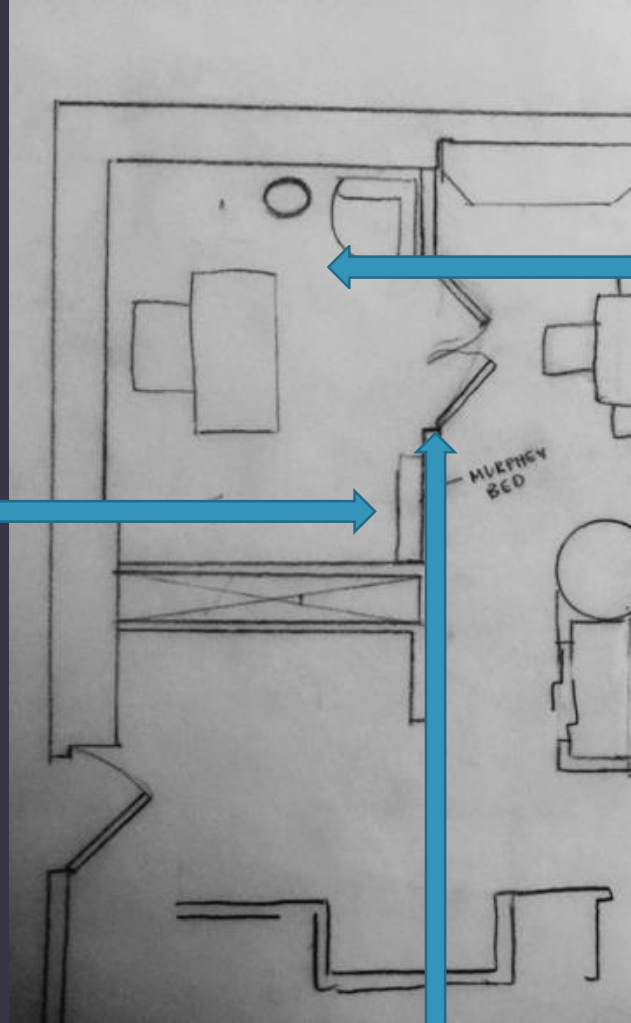
# FOYER LINKS

- BENCH SEAT: [http://www.overstock.com/Home-Garden/Benches/2740/subcat.html?featuredproduct=8353567&featuredoption=11722282&cid=202290&kid=9553000357392&track=pspla&ci\\_src=17588969&ci\\_sku=15662419-000-001&gclid=COaJsbiK-8oCFYGFaQodoZoNmg&gclsrc=aw.ds](http://www.overstock.com/Home-Garden/Benches/2740/subcat.html?featuredproduct=8353567&featuredoption=11722282&cid=202290&kid=9553000357392&track=pspla&ci_src=17588969&ci_sku=15662419-000-001&gclid=COaJsbiK-8oCFYGFaQodoZoNmg&gclsrc=aw.ds)
- FLOORING: <http://www.homedepot.com/p/Millstead-Handscrape-Maple-Spice-3-8-in-Thick-x-3-3-4-in-Wide-x-Random-Length-Engineered-Click-Wood-Flooring-24-4-sq-ft-case-PF9597/202617794>



# DEN INSERTS

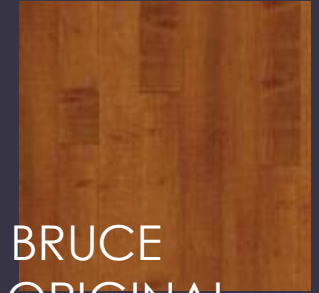
TWIN MURPHY BED



FRENCH DOORS



FLOORING: BRUCE  
AMERICAN ORIGINAL  
WARM SPICE MAPLE  
(HOME DEPOT)



# DEN LINKS

FLOOR: <http://www.homedepot.com/p/Bruce-American-Originals-Warmed-Spice-Maple-3-8-in-Thick-x-3-in-Wide-Engineered-Click-Lock-Hardwood-Flooring-22sq-ft-case-EHD3733L/204655540>

MURPHY BED: <https://www.dutchcrafters.com/Amish-Comfort-Wood-Horizontal-Wall-Bed-with-Side-Units/p/45942?gclid=CPmY7d2l-8oCFQcLaQodFxYHWg>

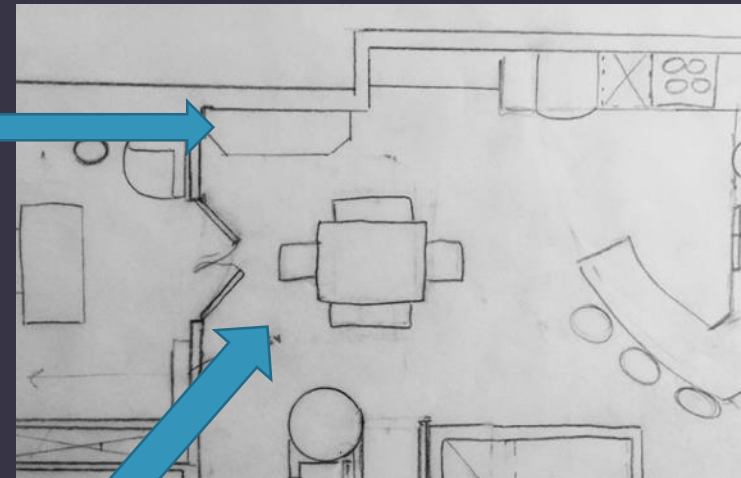
FLOORING: <http://www.homedepot.com/p/Millstead-Handscrape-Maple-Spice-3-8-in-Thick-x-3-3-4-in-Wide-x-Random-Length-Engineered-Click-Wood-Flooring-24-4-sq-ft-case-PF9597/202617794>

# DINING INSERTS

BUILT IN SHELVING



SAME FLOORING



# DINING LINKS

- SHELVING: [http://www.overstock.com/Home-Garden/Media-Bookshelves/2031/subcat.html?featuredproduct=9628815&featuredoption=14362424&cid=202290&kid=9553000357392&track=pspla&ci\\_src=17588969&ci\\_sku=16814516-000-000&gclid=CKuA4s-N-8oCFQetaQodo\\_EH2g&gclsrc=aw.ds](http://www.overstock.com/Home-Garden/Media-Bookshelves/2031/subcat.html?featuredproduct=9628815&featuredoption=14362424&cid=202290&kid=9553000357392&track=pspla&ci_src=17588969&ci_sku=16814516-000-000&gclid=CKuA4s-N-8oCFQetaQodo_EH2g&gclsrc=aw.ds)

# KITCHEN INSERTS

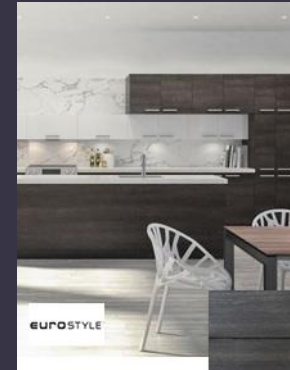
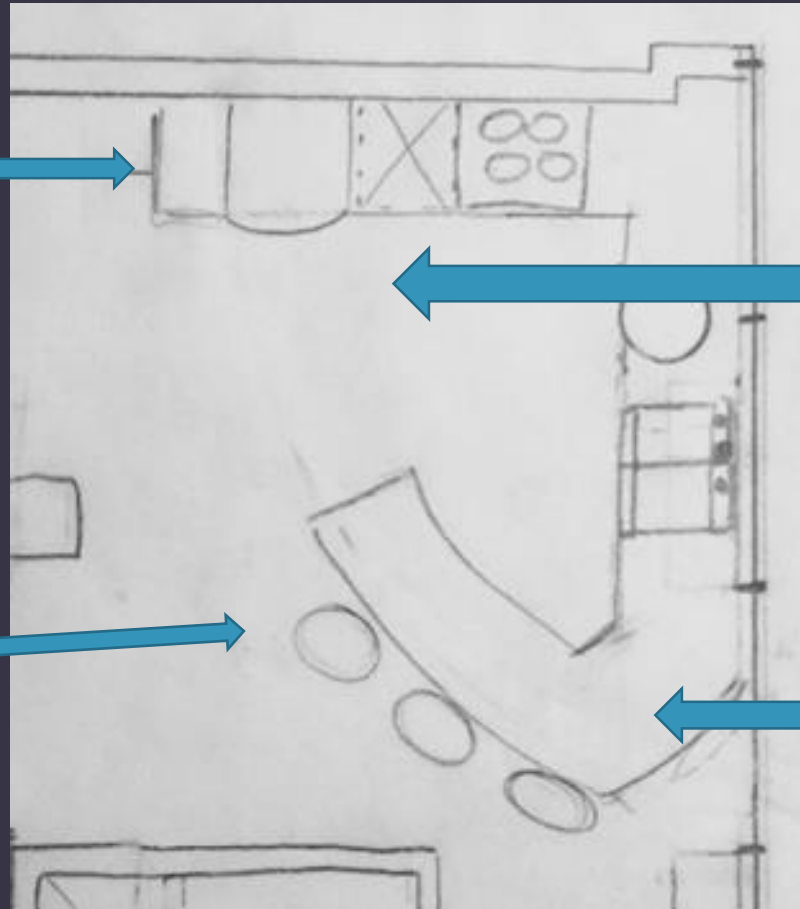
BS



BACKSPLASH



BAR STOOLS



SLEEK LEED CABINETS  
WC AND BC

SAHARA  
BEIGE  
MARBLE  
TILE -TL



MARBLE COUNTER TOPS

# KITCHEN LINKS

MARBLE FLOORING: [http://mosaictiledirect.net/12-in-x-12-in-sahara-beige-marble-polished-flooring-tiles.html?gclid=CL689\\_SQ-8oCFQ8vaQodF10HXw](http://mosaictiledirect.net/12-in-x-12-in-sahara-beige-marble-polished-flooring-tiles.html?gclid=CL689_SQ-8oCFQ8vaQodF10HXw)

CABINETS: <http://www.homedepot.com/b/Kitchen-Cabinets-Cabinet-Hardware-Ready-to-Assemble-Cabinets/Eurostyle/Leeds/N-5yc1vZaqh9Ze2sZ1z0q9eI>

BAR STOOLS:

[http://www.hayneedle.com/product/morganaonyxtuftedcounterstool.cfm?redirect=false&source=pla&kwid=Barstools\\_CTY1436&tid=CTY1436-1&adtype=pla&kw=&ci\\_src=17588969&ci\\_sku=CTY1436-1&gclid=CPfaobiW-8oCFQgxaQodIDoljQ](http://www.hayneedle.com/product/morganaonyxtuftedcounterstool.cfm?redirect=false&source=pla&kwid=Barstools_CTY1436&tid=CTY1436-1&adtype=pla&kw=&ci_src=17588969&ci_sku=CTY1436-1&gclid=CPfaobiW-8oCFQgxaQodIDoljQ)

BACKSPLASH:

[http://www.thebuilderdepot.com/cabi2xpomamo.html?gclid=CN\\_0zd6W-8oCFQUFaQodOG0A9A](http://www.thebuilderdepot.com/cabi2xpomamo.html?gclid=CN_0zd6W-8oCFQUFaQodOG0A9A)

# LIVING ROOM INSERTS



SAME FLOOR

CORNER FIREPLACE W TV



STATEMENT WALL

