

The Malaysian Bungalow

Designed By: Caitlyn Lake

Project Overview



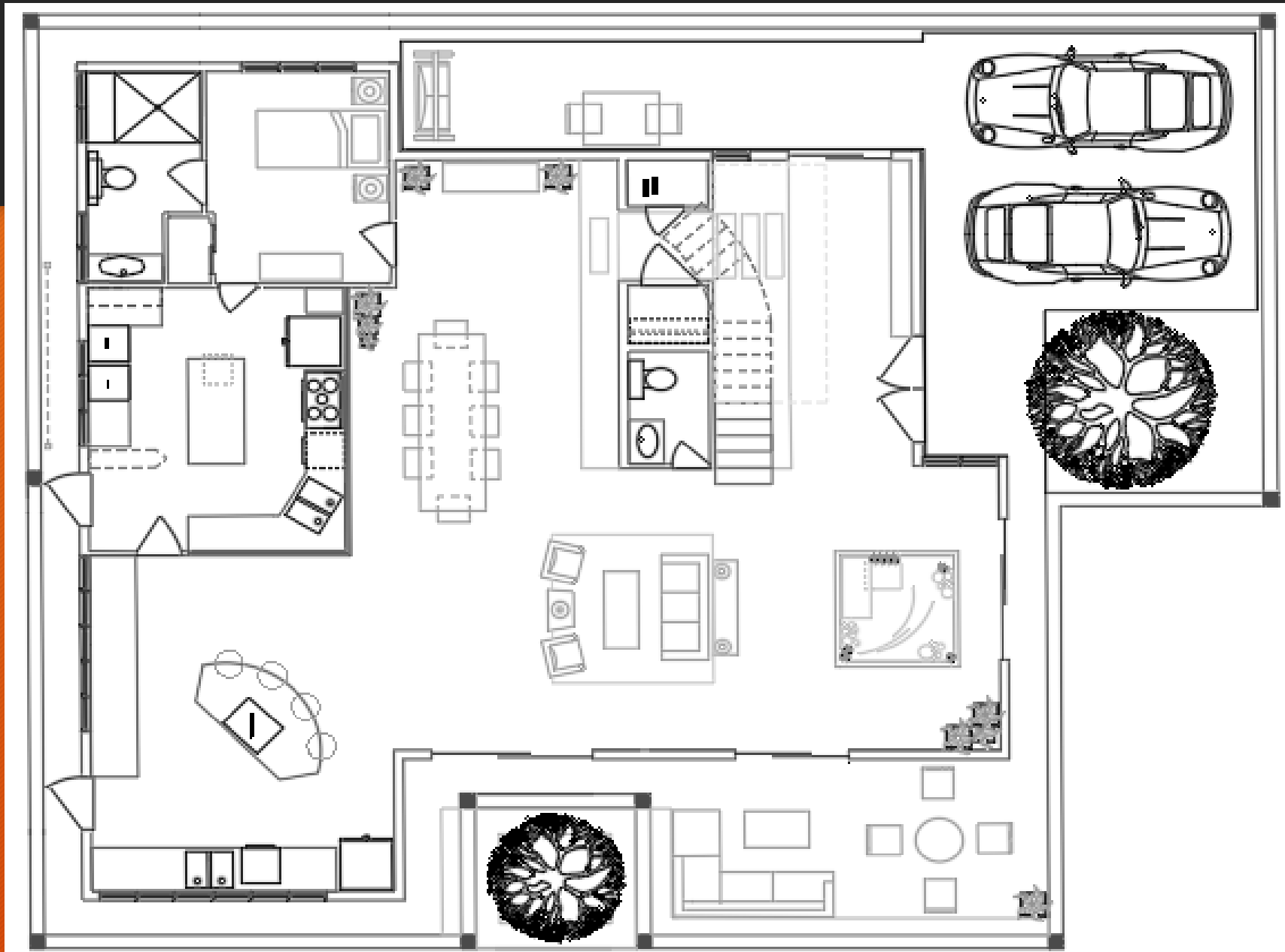
- Located in Petaling Jaya, Selangor, Malaysia MAG 5 @ Grandville
- 6,500 SQFT.
- Built by Favourite Outcome SDN. BHD.
- Family of 5 with Live-in Maid
- Not functional for family with 3 kids
- Dry and Wet kitchen too small
- Placement issues with certain rooms
- Want a more functional and appealing space with modern Balinese style



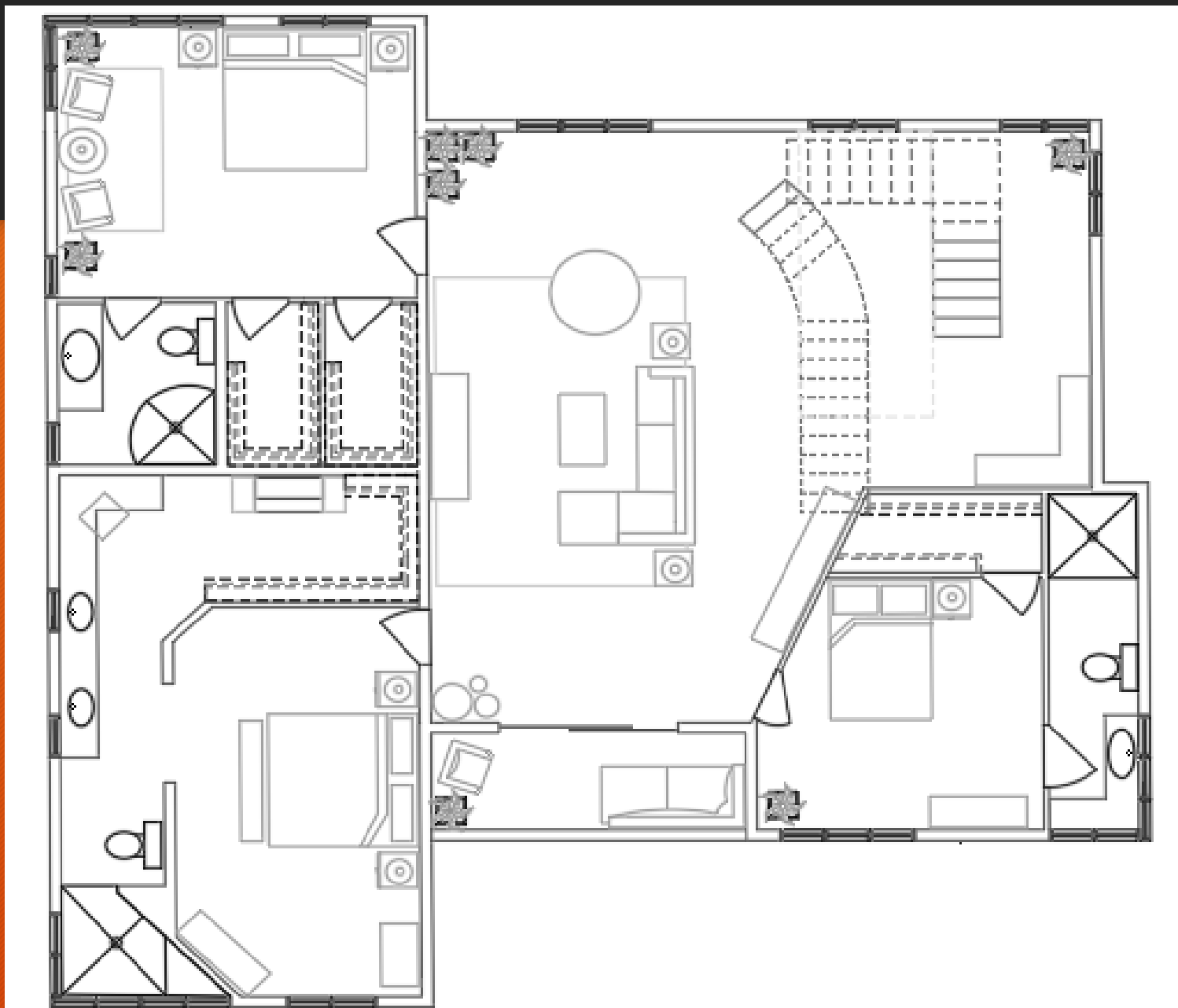
Concept Statement

I wanted to bring the outdoors in with this design by making it apparent when you first walk in the front door. Water was a bring element in my design with the walk through water fall to the closet over a coy pond. I also incorporated stone flooring to keep the natural feel and to help keep the house cool. Another element I added was a meditation sand pit to the side of the entrance. I wanted to keep the ground floor very formal and the first floor more kid friendly. The first floor has a more comfortable feel with the flooring being completely carpet.

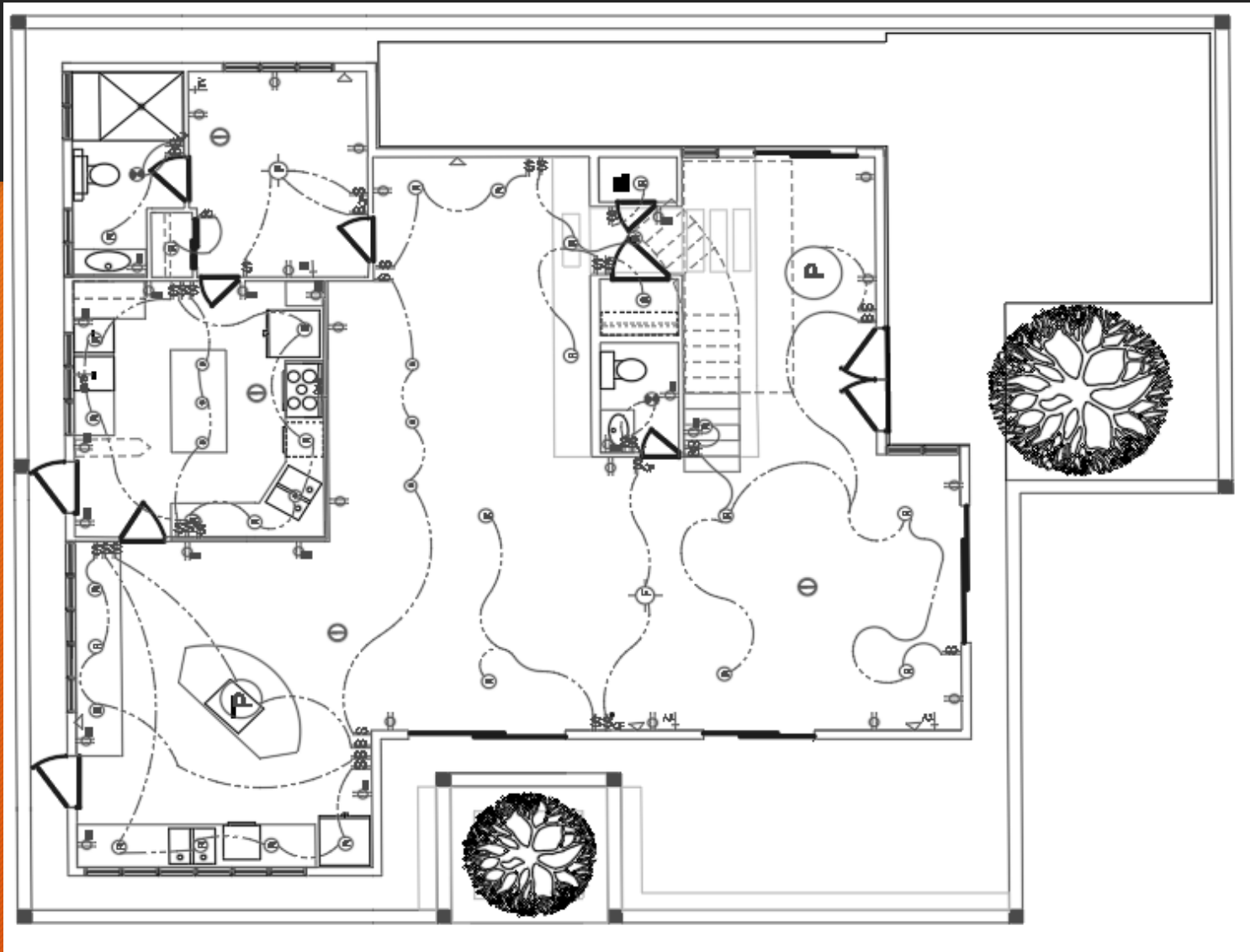
Ground Floor Furniture Plan








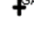







First Floor Furniture Plan



Telephone, Electric, and Lighting Plan



Legend

	Duplex Outlet		Telephone Jack
	Cable Outlet		GFI Outlet
	Ceiling Fan with lights		Gas outlet
	Recessed Light		
	Smoke Detector/ Carbon Monoxide Detector		
	Ceiling Fan Switch		
	Vent switch		
	Switch		
	Pendant Light		
	Light and Vent Combo		

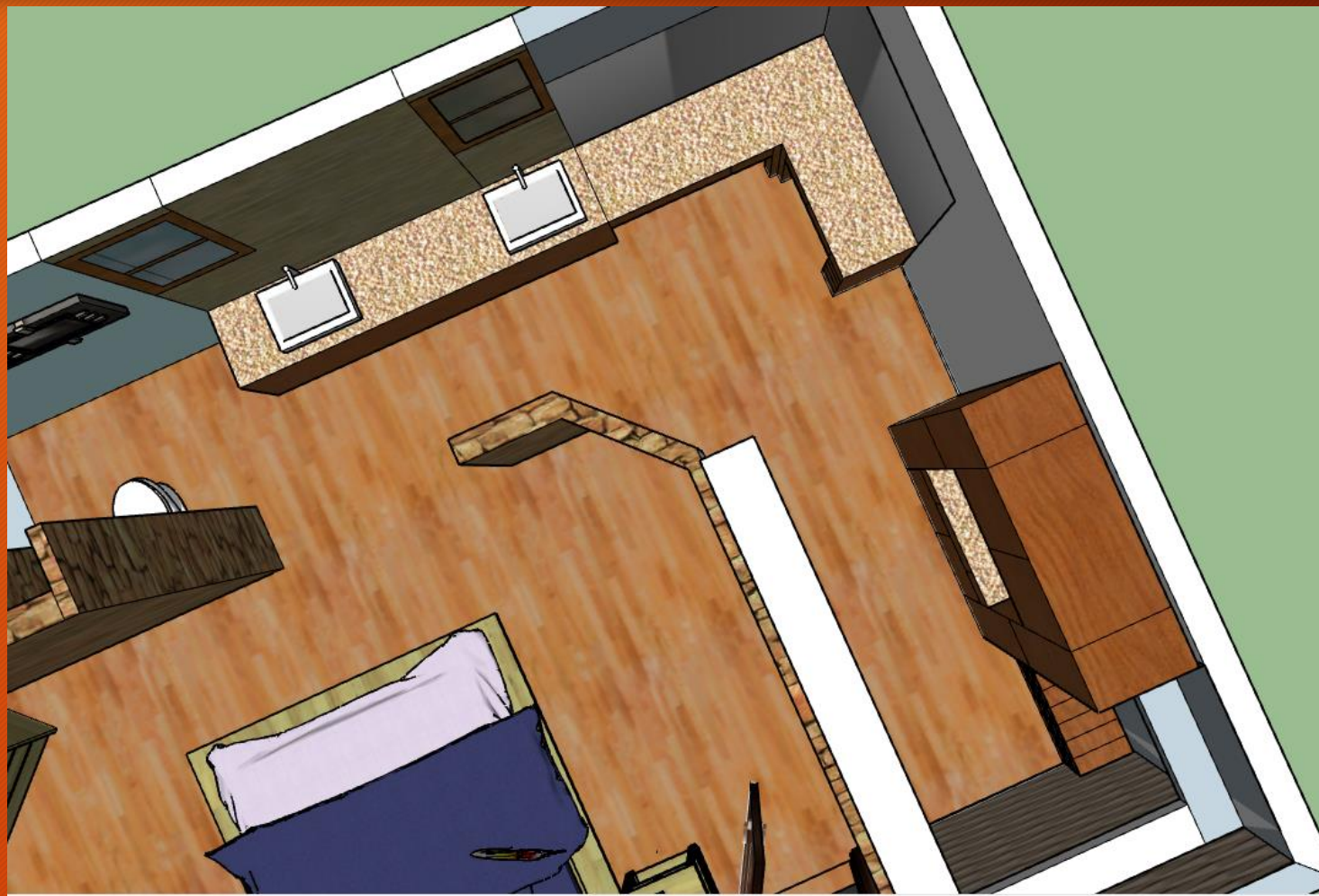
Master Suite Concept Board



Master Suite



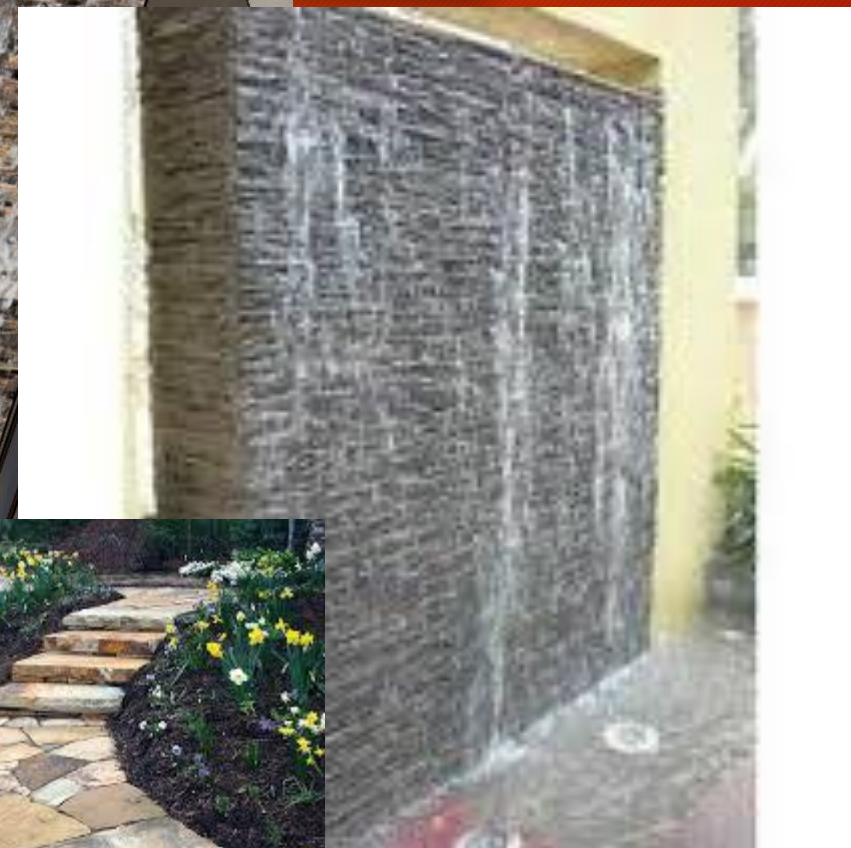
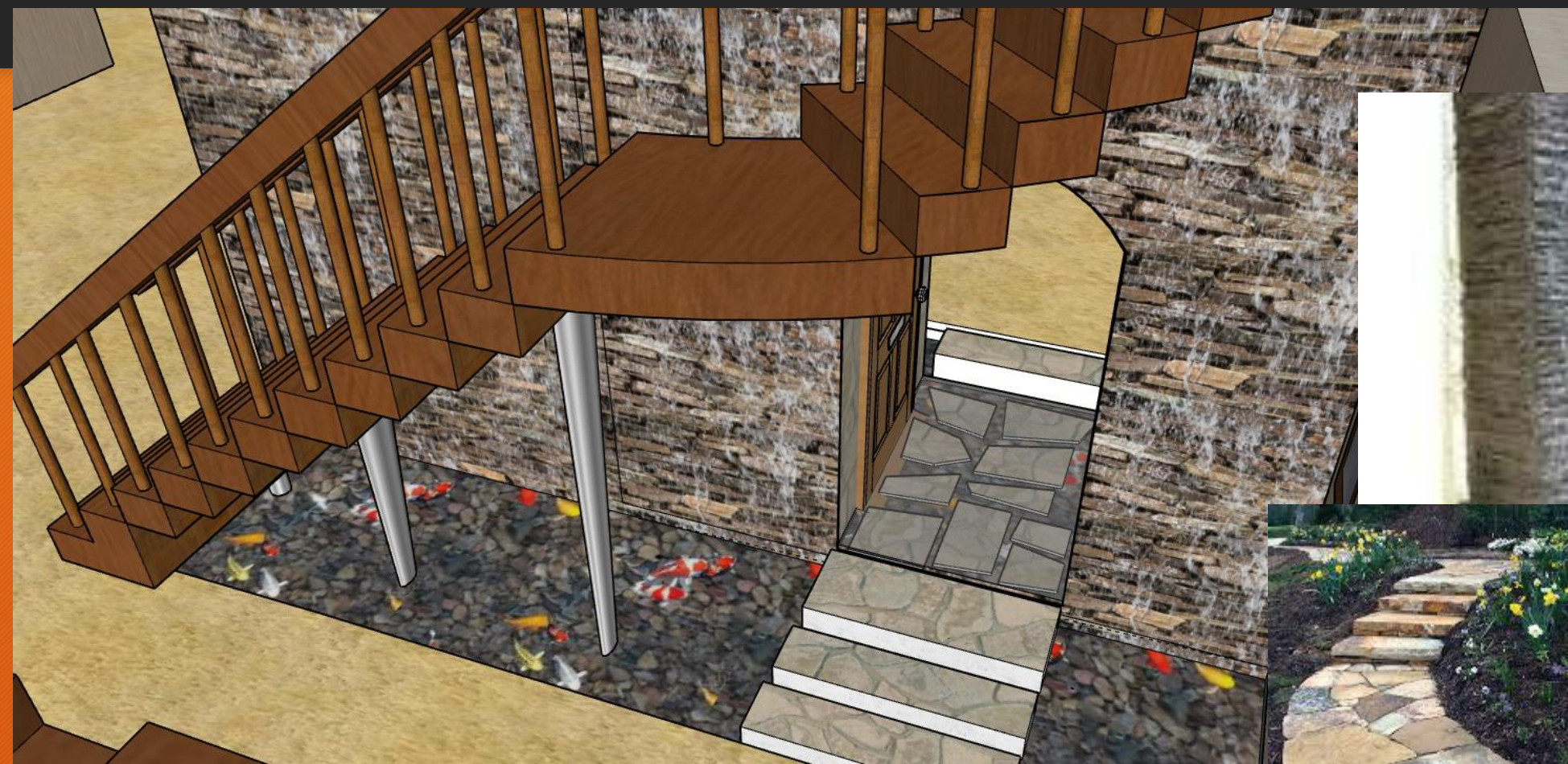
Master Suite



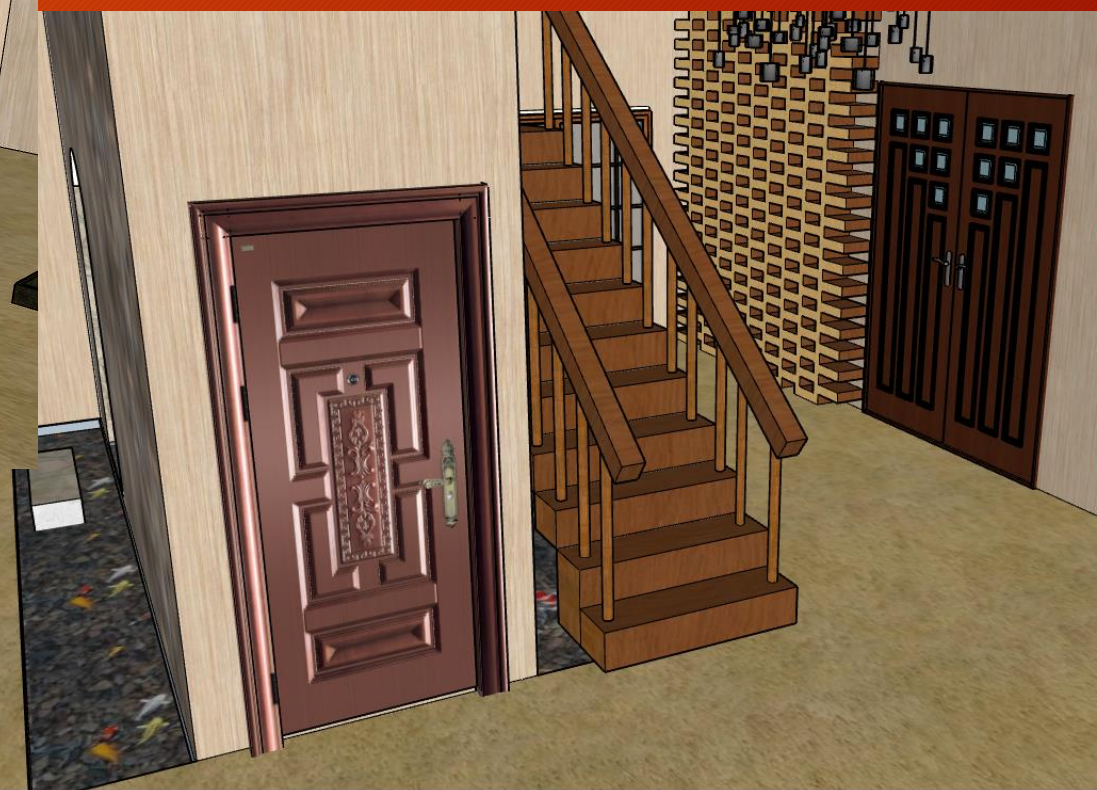
Foyer Concept Board



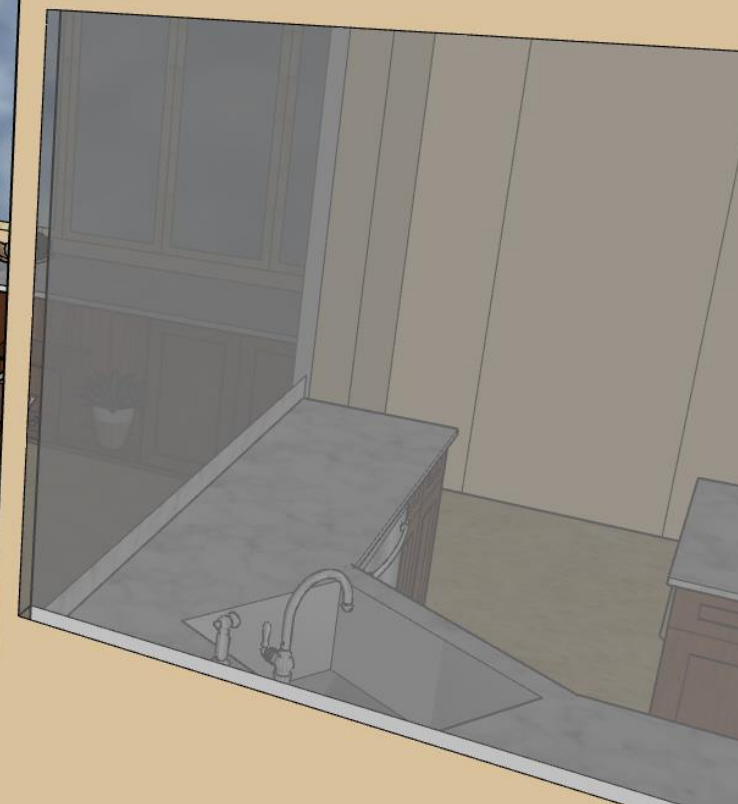
Foyer



Foyer



Dry & Wet Kitchen Concept Board



Dry Kitchen



Dry Kitchen



Dry Kitchen



Wet Kitchen



Wet Kitchen



Wet Kitchen



Wet Kitchen

