



# Study Models

# Making study models

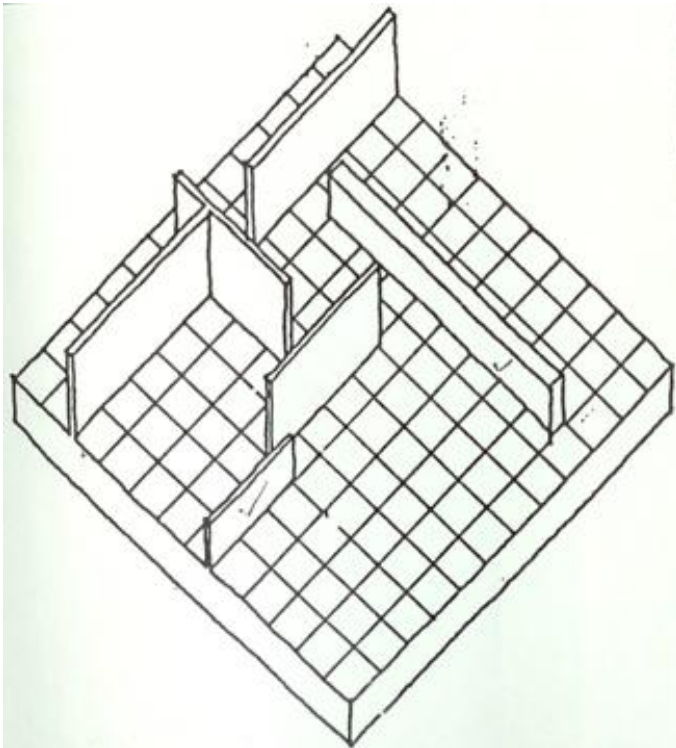
---

- ▶ **Make three study models**
  - ▶ Based on your three best loose plans
  - ▶ Base plane - cut a piece of corrugated board the size of project area (1/2 " larger from the project line)
  - ▶ Paste the loose plan on the base plane
    - ▶ make a copy before paste it down
    - ▶ repeat for the 2<sup>nd</sup> and 3<sup>rd</sup> model
  - ▶ Add vertical plane – add rectilinear interior partitions to the base
    - ▶ such as existing interior, exterior, new interior, and window cut out
    - ▶ cut out openings for doors (don't include doors)
  - ▶ Structural columns (existing)
  - ▶ Add non structural grid– post (optional) and beam (must have to add architectural elements to your design)



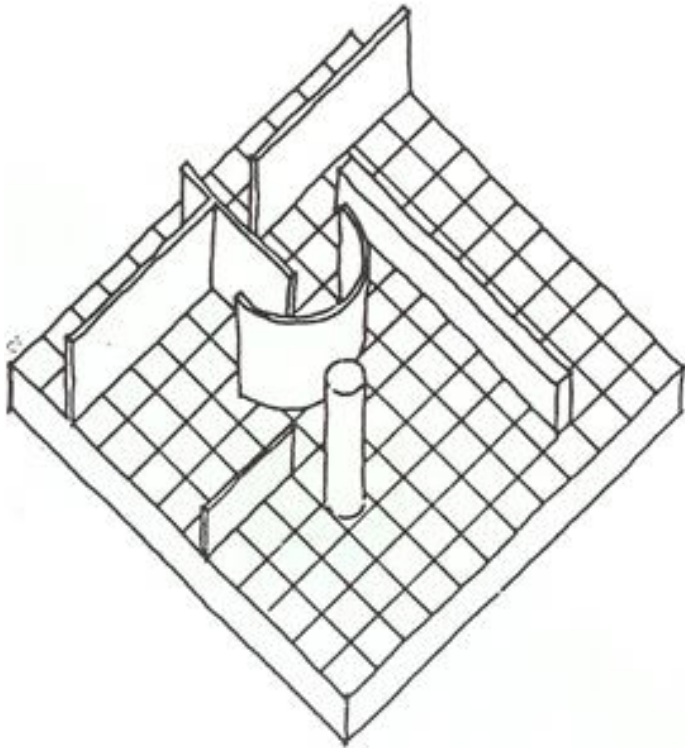
# Vertical plane – rectilinear plane

---



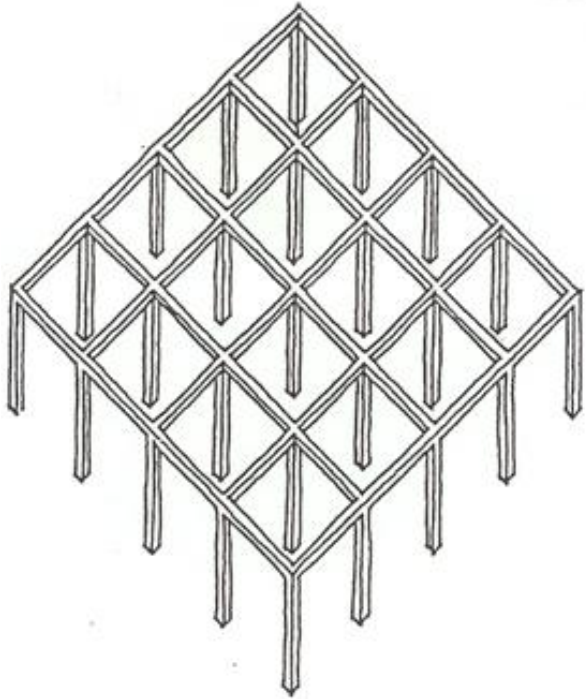
# Vertical plane – curvilinear plane

---



# Post and beam

---



# Study Models

---

- ▶ Need corrugated boards for today and next week for model making
- ▶ Tape, glue, sewing pins, exactor knife, metal ruler, masking tape





# Final Model

---



- 
- ▶ How many study models?
  - ▶ Base on what drawings...
  - ▶ What non-structural element that you need to add in your condo study model?

