

Harbor Point Condo

Dorliska Armstrong

PROJECT OVERVIEW

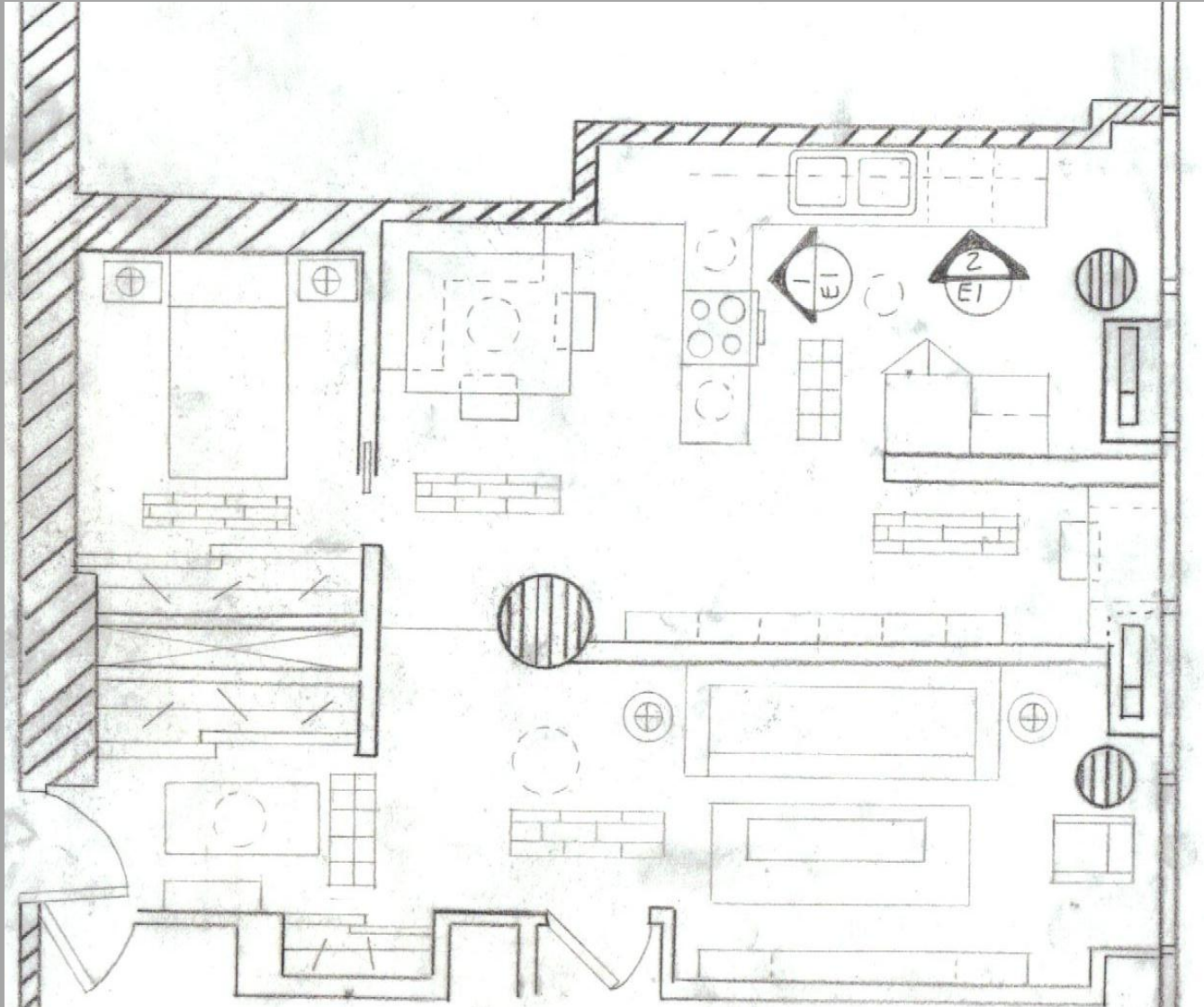
The current space is a 650 square feet condominium located in Chicago, Illinois. The beautiful views of the city are blocked by many walls in this space. The walls also make it difficult to have a functional space for entertaining. This condominium is also very outdated with the décor and kitchen appliances. There are some restrictions with the 10' ceiling height, support columns, registers, and entrance door location.

The client is a single male architect. He is wanting an open space, room for entertaining, view from the entrance, functional space for living, ability to enjoy the view, and also an updated kitchen.

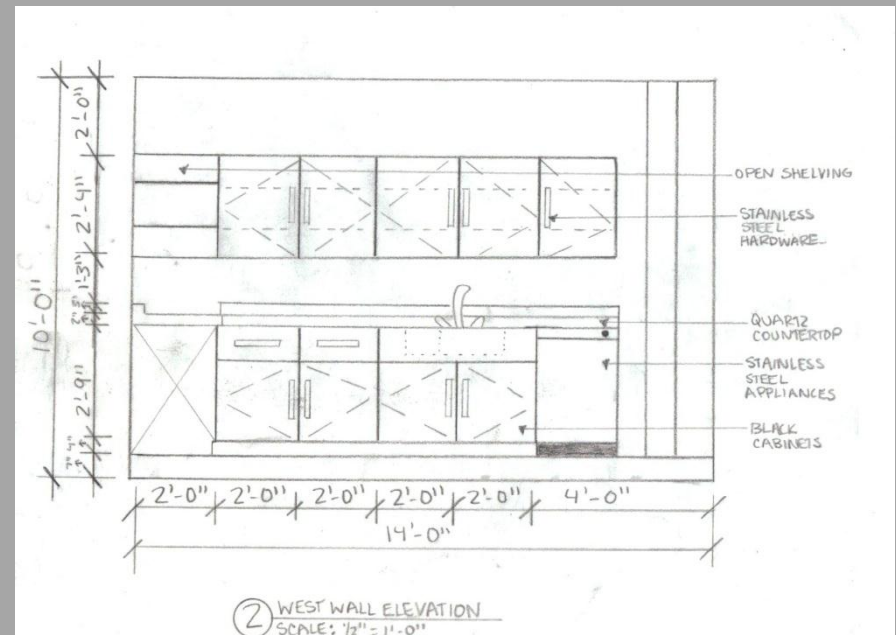
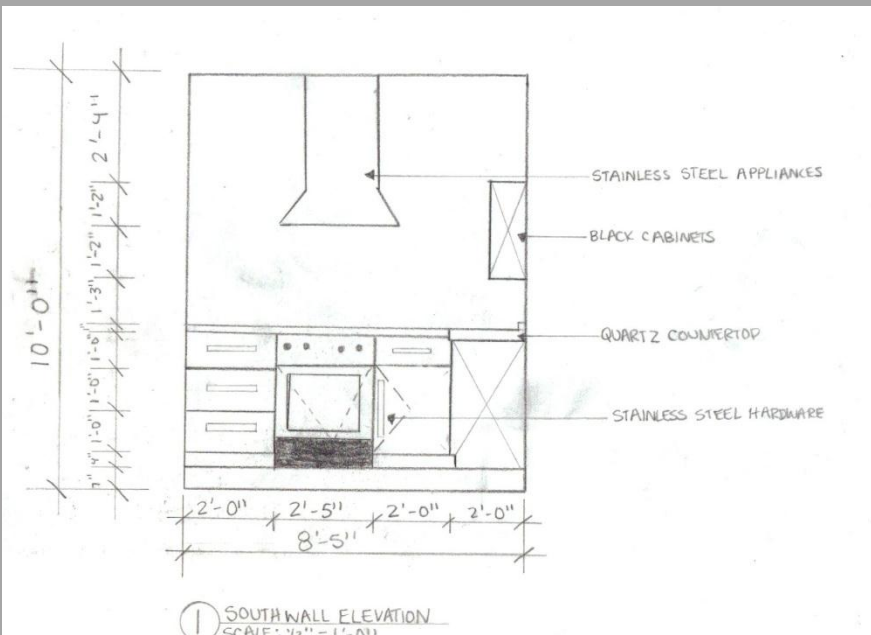
DESIGN CONCEPT

Open feeling, creating an open space with a functional living and entertaining environment. With the removal of walls, to create the open feeling and also to open the view and let natural sunlight in the space. A modern design that flows through the whole condo by selecting similar colors that can unite the different rooms. The focal point will be created with the huge kitchen/dining area for entertaining.

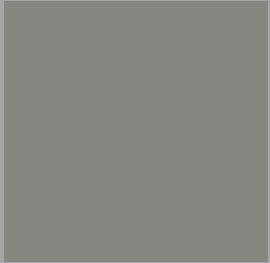
PLAN



KITCHEN ELEVATIONS



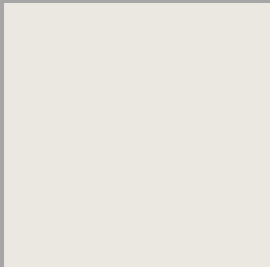
KITCHEN



West Wall



Backsplash



Ceiling, Column



Flooring



East Wall



Countertop



Cabinets



Hardware

KITCHEN APPLIANCES



CEILING TREATMENT



COLOR SCHEME



Tile Flooring



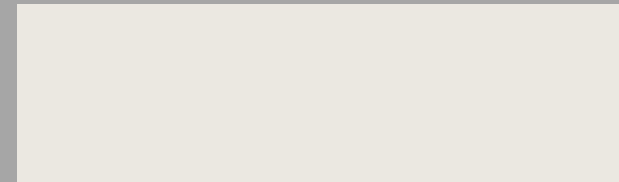
Hardwood Flooring



Bottom of Entertainment Center, East Wall



East Wall



West Wall, Column, and Ceiling



Guest Bedroom Walls

Room Schedule

NO.	Room Description
300	Foyer
301	Guest Room
302	Dining
303	Kitchen
304	Office
305	Living Room

Room Finish Schedule

Room	Floor	Base	Walls	Ceiling	Ceiling Height	Remarks
Foyer	Ceramic Tile	12" Ceramic	Paint	PTD GY BD	10'-0"	
Guest Room	Wood Flooring	3 ¼" wood	Paint	PTD GY BD	10'-0"	
Dining	Wood Flooring	3 ¼" wood	Paint	PTD GY BD	9'-0"	Raised Floor
Kitchen	Ceramic tile	12" Ceramic	Paint	PTD GY BD	9'-0"	Raised Floor
Office	Wood Flooring	3 ¼" wood	Paint	PTD GY BD	9'-0"	Raised Floor
Living Room	Wood Flooring	3 ¼" wood	Paint	PTD GY BD	10'-0"	

Material and Finishes Schedule

Room	Mark	Material/ Finish	Manufacturer	Color/ Catalog #	Remarks
300	C.T.	Ceramic Flooring	Armstrong	Panoma Travertine D1103	
300	PT1	Paint	Behr	Swiss Cream	Ceiling
300	WDDR1	Wood Door	Jeld Wen	White C202	Bi Fold
301	H.W.	Hardwood	Armstrong	Pewter SCM131PW LG	
301	PT1	Paint	Behr	Swiss Cream	N,E,W Wall and ceiling
301	PT2	Paint	Behr	Hillside	South Wall
301	WDDR2	Wood Door	Jeld Wen	White C100	Panel Door
301	WDDR1	Wood Door	Jeld Wen	White C202	Bi Fold
302	H.W.	Hardwood	Armstrong	Pewter SCM131PW LG	

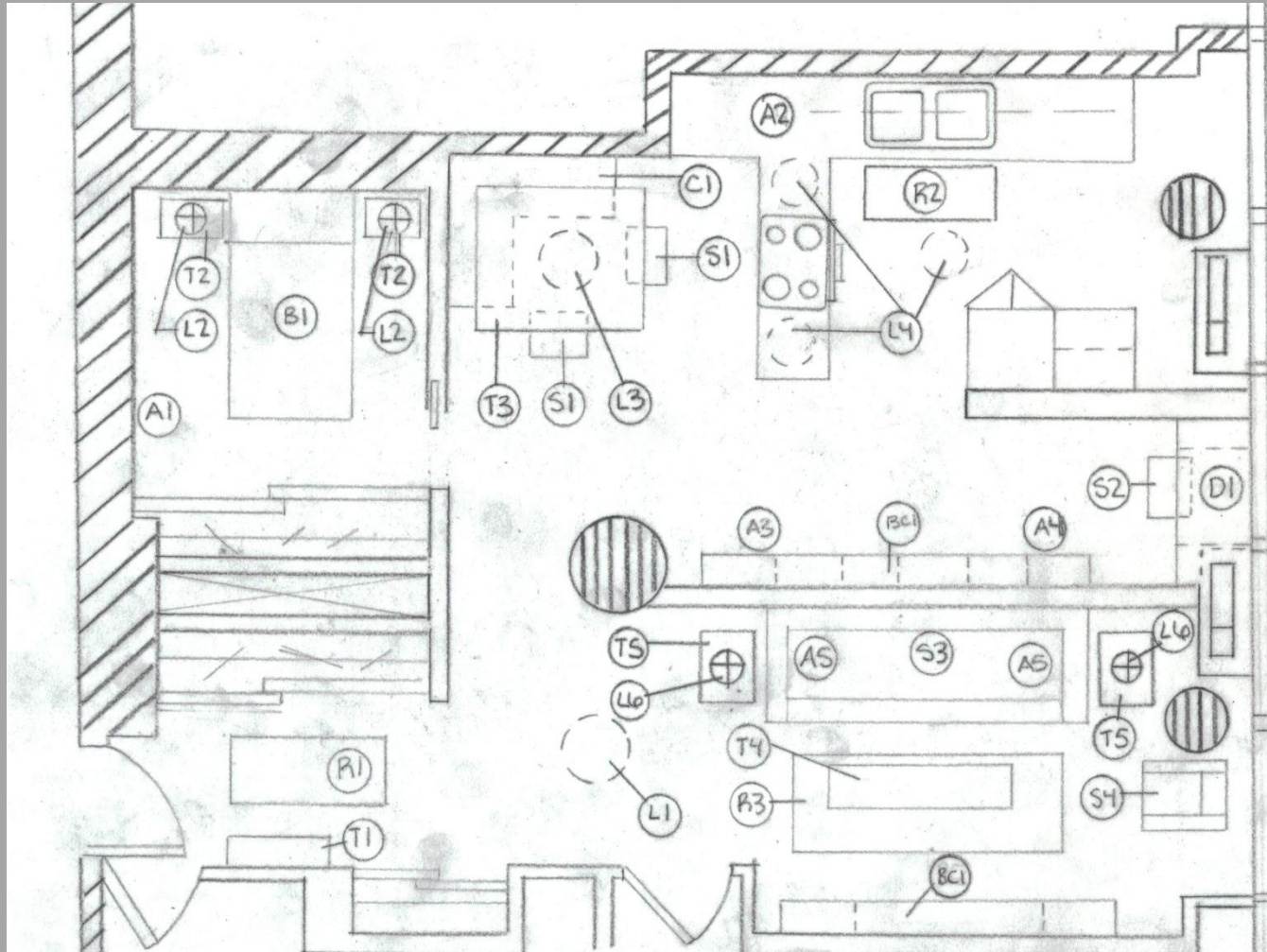
Material and Finishes Schedule

Room	Mark	Material/ Finish	Manufacturer	Color/ Catalog #	Remarks
302	PT1	Paint	Behr	Swiss Cream	
302	PT3	Paint	Behr		Walls
303	C.T.	Ceramic Tile	Armstrong	Panoma Travertime D1103	
303	PT1	Paint	Behr	Swiss Cream	Ceiling, Column
303	PT3	Paint	Behr	Anonymous	East Wall
303	PT4	Paint	Behr	Kingsfighter	West Wall
303	WC	Wall Cabinets	Armstrong	Onyx	
303	BC	Base Cabinets	Armstrong	Onyx	
303	HRD WR	Hardware	Armstrong	Steel	

Material and Finishes Schedule

Room	Mark	Material/ Finish	Manufacturer	Color/ Catalog #	Remarks
304	H.W.	Hardwood	Armstrong	Pewter SCM131PW LG	
304	PT1	Paint	Behr	Swiss Cream	Walls, Ceiling
305	H.W.	Hardwood	Armstrong	Pewter SCM131PW LG	
305	PT1	Paint	Behr	Swiss Cream	Ceiling, Colum, West Wall
305	PT3	Paint	Behr	Anonymous	East Wall
305	PT4	Paint	Behr	Kingsfighter	Bottom of Ent. center

CODED FURNITURE PLAN



Entry

Furniture, Lighting, and Fabric Schedule

Item	Mark	Manufacturer	Catalog #	Quantity	Room
Console Table	T1	Novei Studio	ZUO-107710	1	300
Rug	R1	West Elm	Lkat Links	1	300
Light	L1	Ylighting	AMC-SC-SXTA	1	300

T1



R1



L1



Dining Room

Furniture, Lighting, and Fabric Schedule

Item	Mark	Manufacturer	Catalog #	Quantity	Room
Table	T3	Novei Studeo	SKU2067	1	302
Bench Cushions	C1	Crestmount	10178	2	302
Lighting	L3	Ylighting	FLS-SKY-S1		302
Chair	S1	Crate and Barrel	151818	2	302

T3



C1



L3



S1



Kitchen

Furniture, Lighting, and Fabric Schedule

Item	Mark	Manufacturer	Catalog #	Quantity	Room
Clock	A2	Nelson	25755	1	303
Rug	R2	Tufenkian	LK5.339	1	303
Light	L4	West Elm	Mecury	3	303

A2



R2



L4



Office

Furniture, Lighting, and Fabric Schedule

Item	Mark	Manufacturer	Catalog #	Quantity	Room
Bookcase	BC1	Casamania	A23695	1	304
Desk	D1	West Elm	Modular Basic	1	304
Chair	S2	All Modern	HOC1160	1	304
Elephant	A3	Knoll	15191	1	304
Basket	A4	Knoll	22981	4	304

BC1



D1



S2



A3



A4



Living Room

Furniture, Lighting, and Fabric Schedule

Item	Mark	Manufacturer	Catalog #	Quantity	Room
Couch	S3	Crate and Barrel	688480	1	305
Chair	S4	Crate and Barrel	606553	1	305
Coffee Table	T4	Noveo Studio	SKU854	1	305
Pillow	A5	Crate and Barrel	619396	2	305
Rug	R3	Tufenkian	14037092	1	305

S3



S4



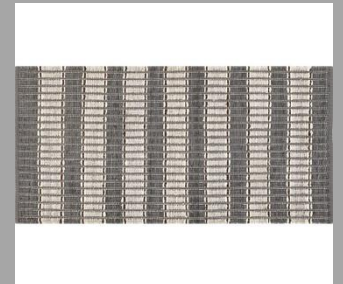
T4



A5



R3



Guest Bedroom

Furniture, Lighting, and Fabric Schedule

Item	Mark	Manufacturer	Catalog #	Quantity	Room
Bed	B1	Modern Essentials	B4589	1	301
Lamp	L2	Modern Lantern	SU45093-1	2	301
Picture	A1	Fine American Art	611	1	301
Nightstand	T2	West Elm	Adams	2	301

B1



L2



A1



T2



Living Room Cont.

Furniture, Lighting, and Fabric Schedule

Item	Mark	Manufacturer	Catalog #	Quantity	Room
Figure	A7	Chiasso	120-1989	1	305
Figure	A8	Chiasso	120-5872	1	305
Table	T5	Inmod	eu-33200WEN	2	305
Lamp	L6	Crate and Barrel	293825	2	305

A7



A8



T5



L6

