

Materials and Finishes Selection

Kitchen



Countertops



Plastic Laminate

▶ Plastic laminate

- ▶ made of plastic-coated synthetics
- ▶ Durable surface
- ▶ Can specify stain and chemical resistant

Formica

Wilsonart

Nevamar

Arborite

Advanced Technology

Incorporated

Coveright

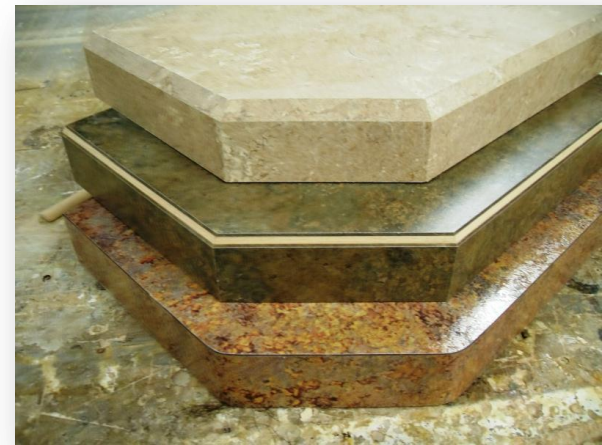
Panolam Industries



Plastic laminate

▶ Pros

- ▶ Easy to clean
- ▶ Anti-microbial
- ▶ Affordable compared to other materials
- ▶ End finishing and front edge choices can be expensive



Plastic laminate

▶ Plastic laminate

▶ Cons

- ▶ Visible seam and brown line
- ▶ Cannot withstand scratches, heat and chipping



ColorCore Plastic Laminate by Formica
- seamless



Solid surface

▶ Solid surface materials

- ▶ solid throughout the entire thickness
- ▶ No brown line
- ▶ Pros - combination
 - ▶ smoothness of marble
 - ▶ solid feel of granite
 - ▶ workability of wood



Corian

Formica

LG

Tristone

Avonite

Swanstone



Design and image property of respective owners

<http://www2.dupont.com/corian/en-us/bi/case-study/colorful-kitchen-renovation.html>

○ Advantages

- ✦ Low maintenance
- ✦ Nonporous
- ✦ Seamless
- ✦ Highly resistant to abuse
- ✦ Easy to repair



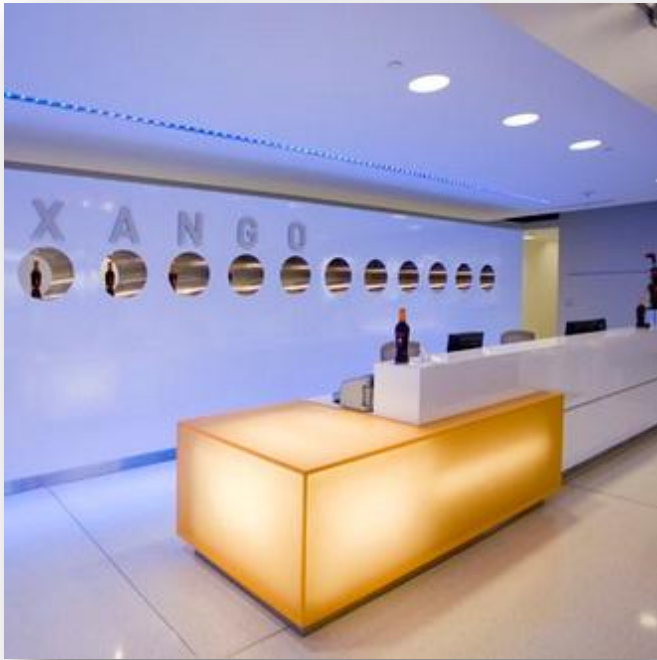
▶ Disadvantages

- ▶ vulnerable to heat
- ▶ can crack below 5 degrees celsius



Acrylic solid surface

- ▶ Translucent – amazing clarity for unrivaled light transmission
- ▶ Available in a 1/2", 1" and 2" t.
- ▶ solid surface countertop – renewable resource



- ▶ co-polymer resin - similar to the plastic found in drink bottles



Chroma line - Clear, Colorful as Glass
www.3-form.com



Tile

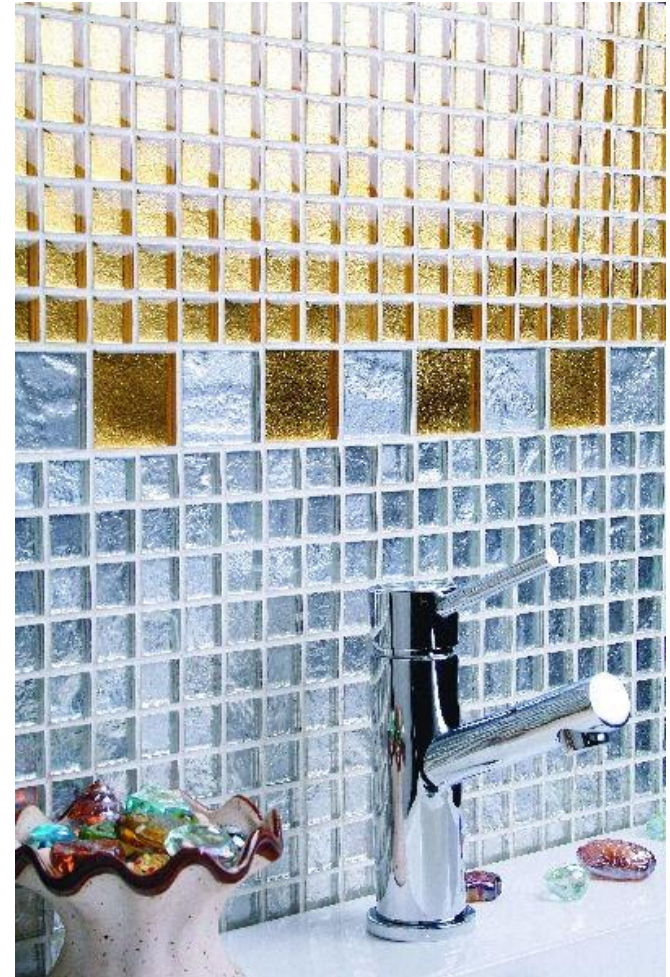
▶ Tile

- ▶ Countertop or wall
 - ▶ Backsplash (15" to 18")
- ▶ Ceramic, porcelain, mosaic, or glass
- ▶ Easy to clean except the grout
- ▶ Advantages
 - ▶ With stand heat
 - ▶ Easy to clean
- ▶ Disadvantages
 - ▶ Grout hard to clean
 - ▶ Fragile items will break
 - ▶ Crack easily





► Mosaic tiles from Stone Source



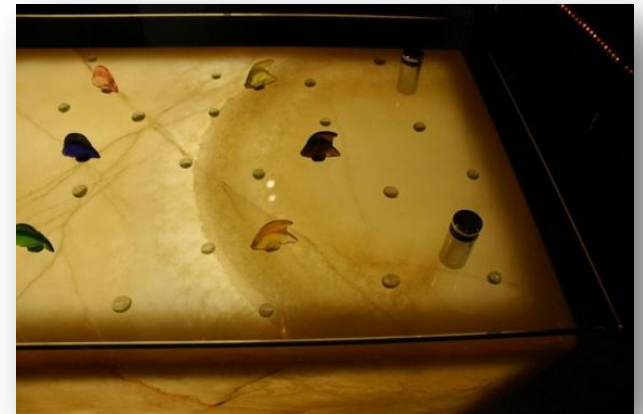
Glass tiles from Stone Source

Glass

- ▶ Glass
 - ▶ Translucent
 - ▶ Opaque
 - ▶ Painted
 - ▶ Laminated
 - ▶ Tinted



Backpainted glass island
www.cbdglass.com



▶ Advantages

- ▶ Stain proof, hygienic
- ▶ Heat resistant

▶ Disadvantages

- ▶ Chipping
- ▶ Once breaks need to replace with a new one
- ▶ Scratches and fingerprints
- ▶ Water patches



ThinkGlass



Wood or Butcher Block

- ▶ **Wood or Butcher Block**
 - ▶ Hardwoods - maple and oak are most often used
 - ▶ most eco-friendly (wood is a renewable resource)
 - ▶ Pros
 - ▶ easy to clean
 - ▶ smooth
 - ▶ can be sanded
 - ▶ Cons
 - ▶ damage from moisture
 - ▶ Indentation
 - ▶ easily get burnt
 - ▶ last about four to eight years at most



Concrete

▶ Concrete

- ▶ Great for unusual shapes
- ▶ Pros
 - ▶ heat and scratch resistant
 - ▶ can be color-tinted or filled
 - ▶ looks exotic and unusual
- ▶ Cons
 - ▶ mid to high range on cost due to custom work
 - ▶ cracking is possible
 - ▶ somewhat industrial
 - ▶ porous (but can be sealed)



a poured slab with recycled glass chips



Concrete



Concrete and wood





Natural stone



Countertop

Marble

▶ Marble

- ▶ Very expensive
- ▶ used as portion - baking
- ▶ Can be used as a cutting surface
- ▶ Pros
 - ▶ waterproof, heatproof, beautiful natural material
- ▶ Cons
 - ▶ Porous - stains easily
 - ▶ Acids will do damage
 - ▶ Expensive
 - ▶ Can scratch



Limestone



Vegas Rock and Burlington stone

▶ Vegas Rock



▶ Burlington stone



Stonesource.com



Unusual Stones

- ▶ Sandstones, volcanic rocks, serpentines



Soapstone

▶ Soapstone Counters

- ▶ soft to the touch
- ▶ Smooth to feel
- ▶ generally dark gray in color
- ▶ often seen in historic homes but is also used in modern homes
- ▶ Pros
 - ▶ rich, deep color; smooth feel
 - ▶ Not absorbent - can be scrubbed or sanded off
- ▶ Cons
 - ▶ requires regular maintenance (mineral oil)
 - ▶ may crack and darken over time



-
- ▶ 1-1/4" thick soapstone for top and back
 - ▶ doesn't require a sub-base on your cabinets



Vermont Soapstone



Granite

▶ Granite

- ▶ 2nd hardest material
- ▶ one of the best options
- ▶ very durable, long-lasting and elegant in appearance

▶ Advantages

- ▶ Holds up to heat
- ▶ Easy to clean (smooth as glass)
- ▶ Will last a lifetime
- ▶ Resistant to scratches
- ▶ waterproof and prevents the growth micro-organism



▶ Disadvantages

- ▶ Expensive
- ▶ absorbs stains if not sealed properly
- ▶ Replacement will be difficult as each piece has a unique coloration and patterns
- ▶ Need a sub –base if the granite is over 10” thick



Onyx

- ▶ Onyx
 - ▶ Is semi-translucent material
 - ▶ Can be illuminated by back light



Quartz

▶ Quartz

- ▶ Engineered stone
- ▶ made of 93 percent crushed natural quartz with 7 percent resins and pigments
- ▶ Durability - advantages of granite but easier to maintain (less porous and more scratch resistant)
- ▶ Strength - stronger, more durable, and easier to take care than granite

CaesarStone

<http://www.caesarstoneus.com/>

Cambria Quartz

DuPont Zodiaq

LG Viatera

Silestone

<http://www.silestoneusa.com>



Quartz

- Advantages

- Custom – flexibility
- quite durable
- stain, scratch, heat and water resistant
- a non-porous surface
- Antimicrobial
 - reducing the potential for bacterial growth
- easy to maintain and care
- does not need periodic sealing
- one of nature's strongest minerals

- ▶ Disadvantages

- ▶ Expensive (more than Granite)
- ▶ does not look natural
- ▶ seams are usually visible along the front edge



Quartz

- ▶ Quartzite
- ▶ Caesar
- ▶ Silestone
- ▶ Cambria



Stainless steel

- Contemporary and industrial look
- Seamless look
- High-tech and sterile look
- ▶ Pros
 - ▶ Durable, highly heat resistant
 - ▶ does not crack
 - ▶ non-porous - resistant to stains and corrosion
 - ▶ waterproof and easy-to-clean
- ▶ Flexible to be installed in all kinds of unique spaces
- ▶ Adds sleek and modern look
- ▶ reflects light - creates the illusion of a larger kitchen space



Stainless steel

- **Cons**
 - Expensive, noisy, may dent
 - Leaving water spots
 - Shows scratches
 - Food, grease, and fingerprints all show very clearly



Decorative Stainless Steel Sheet

www.quickshipmetals.com



Backsplash

- ▶ Ceramic
- ▶ Stainless steel
- ▶ Bronze

- ▶ Tins

- ▶ Marble

- ▶ <http://www.hgtv.com/kitchens/10-kitchen-backsplashes-that-wow/pictures/index.html>



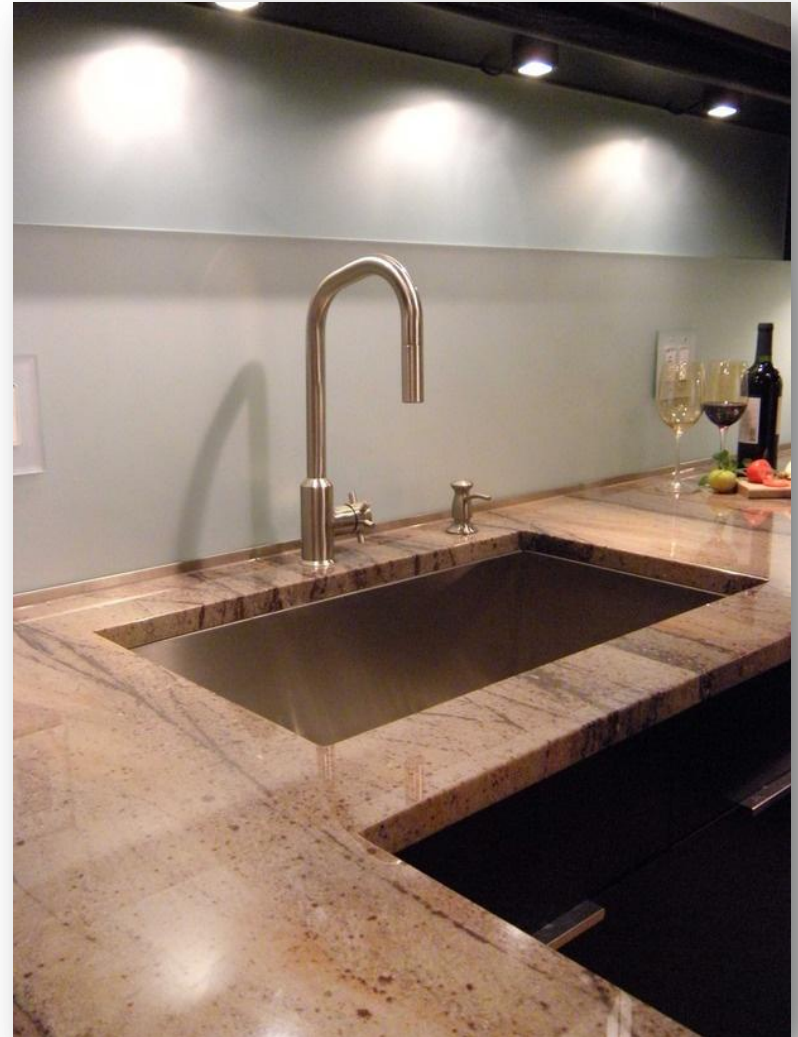
Backsplash

- ▶ Glass
- ▶ Tins
- ▶ Natural stone

- ▶ <http://www.hgtv.com/kitchens/10-kitchen-backsplashes-that-wow/pictures/index.html>



- ▶ Glass
- ▶ Bead board
- ▶ Concrete
- ▶ Sandblasted mirror





Kitchen Cabinets



Kitchen Cabinets

- ▶ **Wood**
 - ▶ Made of oak, maple, birch, mahogany, cherry
 - ▶ Traditional or contemporary styles
- ▶ **Plastic laminate/Melamine**
 - ▶ Various colors and patterns
- ▶ **Glass**
 - ▶ Clear, sandblasted/frosted, laminated, tinted, colored



▶ **Glass**

- ▶ Breakable
- ▶ May show finger print



▶ **Thermofoil**

- ▶ Created from vinyl material wrapped over fiberboard

▶ **Pro**

- ▶ very affordable.
- ▶ Incredibly easy to clean
- ▶ Provides bright and clean appeal of painted cabinets

▶ **Cons**

- ▶ May blister, bubble, and peel
- ▶ Moisture seeping below the surface can cause swelling
- ▶ requires extra care



Solid acrylic

- ▶ Parapan high glossy acrylic
 - ▶ can be cut to any size and thermoformed into any radius of curve
 - ▶ durability and moisture resistance
 - ▶ solid acrylic all the way through, it is not laminated or coated
 - ▶ Solid or digital pattern



Lacquer

- ▶ Titan Grey & Mineral White Satin Lacquer
 - ▶ Cutting-edge
 - ▶ Lacquered glass door
 - ▶ framed in molded aluminum



Veneer

- ▶ Macassar ebony veneer cabinetry
- ▶ <http://www.27estore.com/cabinet-doors>
- ▶ http://bellmont1900.com/finish_options.html



- ▶ Marsh Oak Veneer with a rich near-black stain
- ▶ Bright Lights, Small Kitchen



Wood cabinetry

▶ Cherry-Stained wood

▶ Pecan-finished



Stainless steel

- ▶ **Steel**
 - ▶ Very expensive
 - ▶ Finishes: brushed, shinny, matte, anodize, pattern
 - ▶ Can be thinner, taller (more storage)
 - ▶ Resistant to temperature and humidity changes (won't twist, warp, swell or absorb odors)



Door type

▶ Framed cabinets

- ▶ which are popular in traditional kitchens
- ▶ have a front frame around the cabinet opening
- ▶ door attaches to the frame



Framed

▶ Frameless or European-style cabinets

- ▶ have no front frame
- ▶ door attaches directly to the side of the cabinet
- ▶ which are often used in contemporary kitchens



Frameless

- ▶ Clean style emphasizes the door
- ▶ is often referred to as European style or full-access cabinetry



Framed cabinets - Door Types

▶ Full overlay doors

- ▶ have less than 1/8" space on all sides
- ▶ fully lay over the cabinet
- ▶ All frameless cabinets have only full overlay doors option
- ▶ require concealed hinges



▶ Partial overlay doors

- ▶ usually a 1/2" to 1" space on all sides, allowing you to see much of the face frame
- ▶ most common type of cabinet door and drawer front



Framed cabinets -Door Types

▶ Inset doors

- ▶ lay flush with the front edges of the cabinet box
- ▶ are a popular choice for Shaker or Arts & Crafts style
- ▶ Beaded Flush Inset
 - ▶ bead detail added



Door Styles

▶ Slab

- ▶ Clean lines
- ▶ Flat



▶ Raised Panel

- ▶ Raised panels generally measure between 1/2" and 3/4" thick



▶ Recessed Panel

- ▶ has a picture frame-type look and a simpler
- ▶ more country or transitional appearance



Door Styles

- ▶ **Curved Panel**

- ▶ top portion panel curves
- ▶ Panel is raised

- ▶ **Cathedral Panel**

- ▶ A cathedral-type arch into the recessed panel

- ▶ **Bead board Panel**

- ▶ Typically found in a recessed panel
- ▶ to create a casual country style



Hardware

- ▶ Add pulls, knobs and handles that complement your kitchen's design style to cabinets
- ▶ Aluminum strip handles
- ▶ No handles
 - ▶ invisible angled 'finger pulls' cut into the top or side of the cupboards

