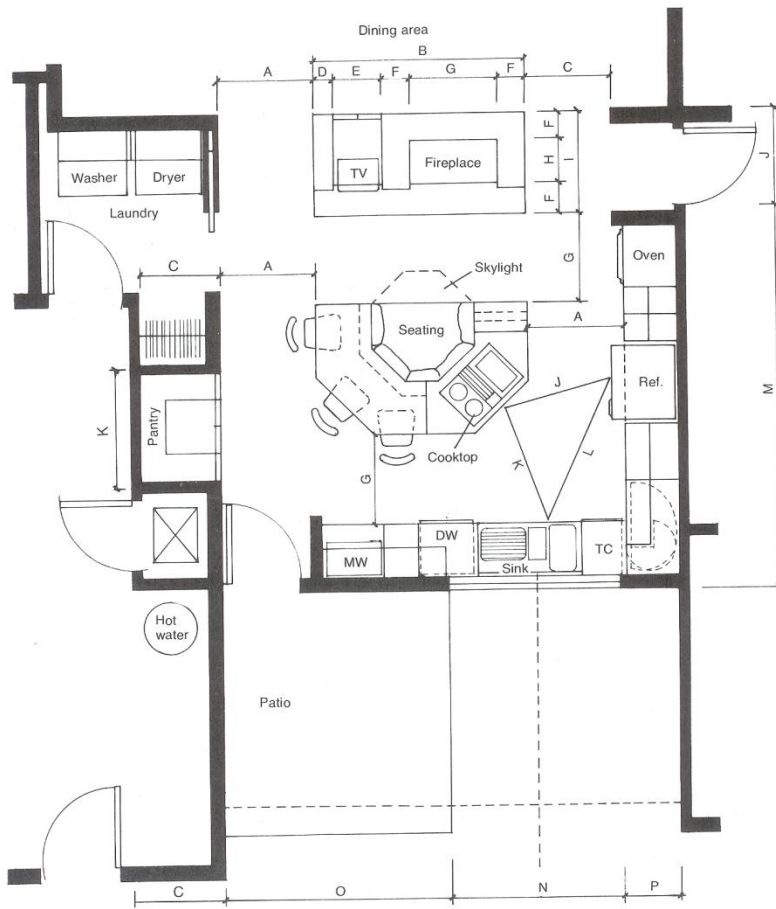


Interior Graphic Standards - II

Furniture plan

Kitchen layout



Kitchen with built-in breakfast bar & banquette lounging area

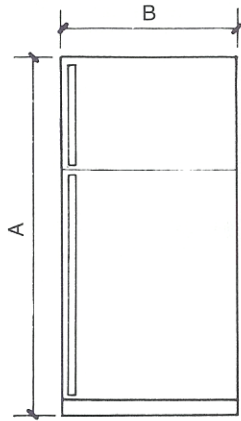
Dimensions & notes:

- A = 42" (106.68 cm)
- B = 94" (238.76 cm)
- C = 39" (99.06 cm)
- D = 8" (20.32 cm)
- E = 22" (55.88 cm)
- F = 12" (30.48 cm)
- G = 40" (101.60 cm)
- H = 20" (50.80 cm)
- I = 46" (116.84 cm)
- J = 48" (121.94 cm)

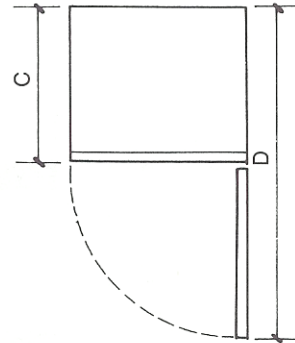
- K = 54" (137.26 cm)
- L = 72" (182.88 cm)
- M = 13' (3.96 m)
- N = 6'4" (1.93 m)
- O = 8'4" (2.54 m)
- P = 26" (66.04 cm)
- TC = trash compactor
- DW = dishwasher
- MW = microwave oven

Kitchen appliances

REFRIGERATORS & FREEZERS

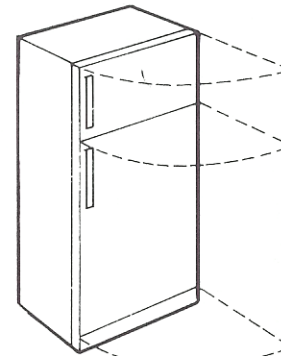


Top freezer

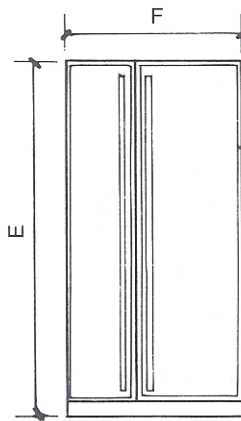


Single door

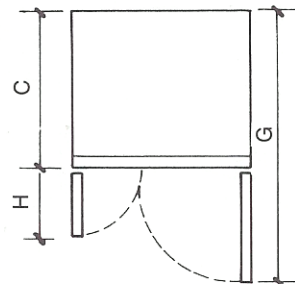
Note: Allow ample wall space on hinged side of door to permit a 90° door swing. 4" to 5" (10.16 to 12.70 cm) should be adequate.



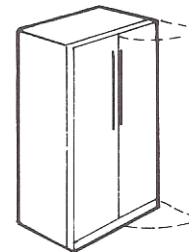
Double doors



Refrigerator-freezer side by side



Plan view



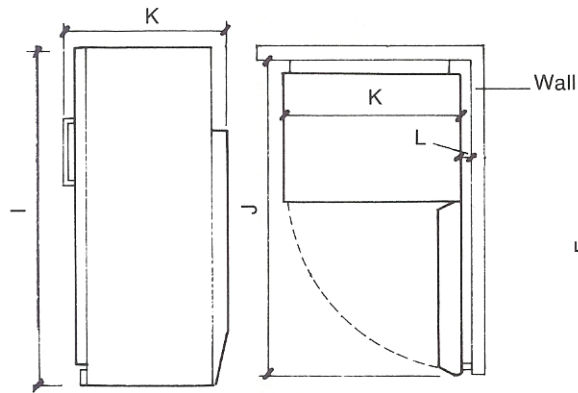
Double doors

General dimensions:

	in.	cm
A	= 66	167.64
B	= 34	86.36
C	= 30	76.20
D	= 60	152.40
E	= 65	165.10
F	= 35	88.90
G	= 45-48	114.30-121.92
H	= 10-12	25.40-30.48

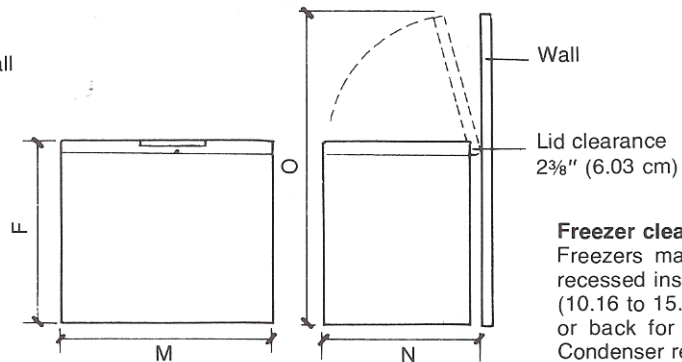
Clearance requirements

Allow 1/2" (1.27 cm) between back wall and condenser because it requires ventilation. Internal coils also require 1/2" between back wall and condenser. Allow 2" (5.08 cm) clearance above the refrigerator for air circulation. Allow 4" (10.16 cm) for recessed installations. Not all systems are designed for recessed use, but when handling one that is, add an additional 1/2" to width. Consult manufacturer's suggestions.



Upright freezer
Side view

Plan



Chest-type freezer
Front view

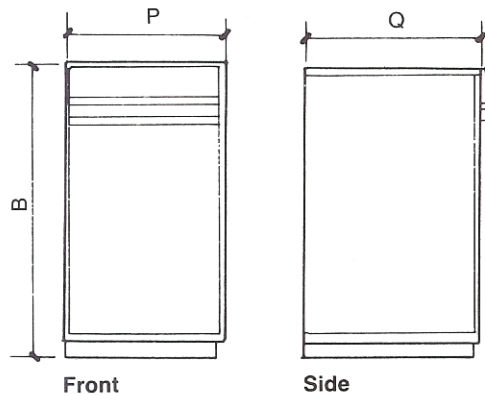
Elevation
Side view

Lid clearance
2 3/8" (6.03 cm)

Freezer clearances

Freezers may not be designed for recessed installation. Allow 4" to 6" (10.16 to 15.24 cm) at back and top or back for proper air circulation. Condenser requires 2" space above the freezer for ventilation. Also plan 1/2" space between wall and condenser.

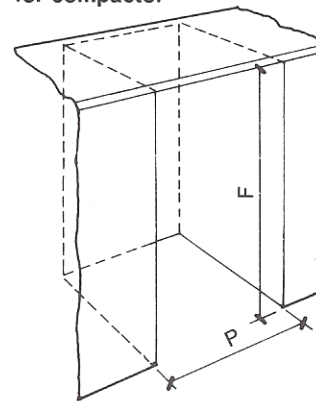
TRASH COMPACTORS



Front

Side

Recessed space for compactor



Freezer dimensions:

	in.	cm
I	= 59-65	149.86-165.10
J	= 54-57	137.16-144.78
K	= 28-30	71.12-76.20
L	= 4-6	10.16-15.24
M	= 25-69	63.50-175.26
N	= 23-29	58.42-73.66
O	= 55-60	139.70-152.40
P	= 15	38.10
Q	= 18	45.72



125 V
15 amps



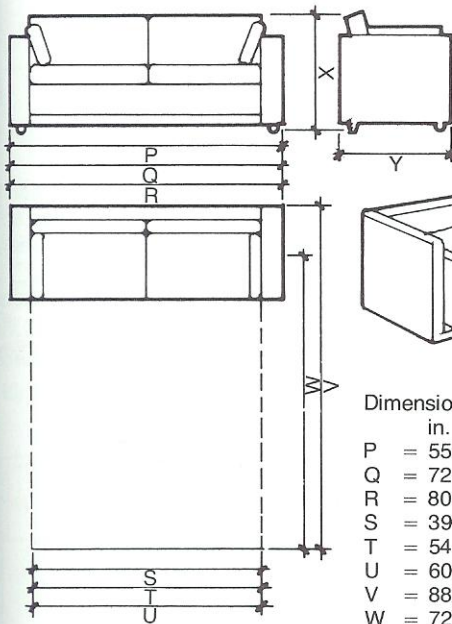
250 V
15 amps



250 V
20 amps

Convertible bedding: sleepers and sofas

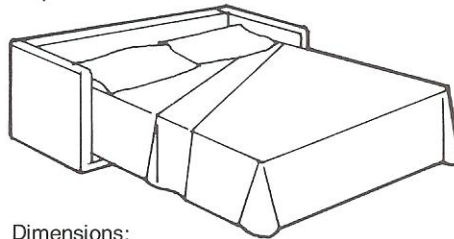
TYPES OF CONVERTIBLE BEDDING



Sofa beds

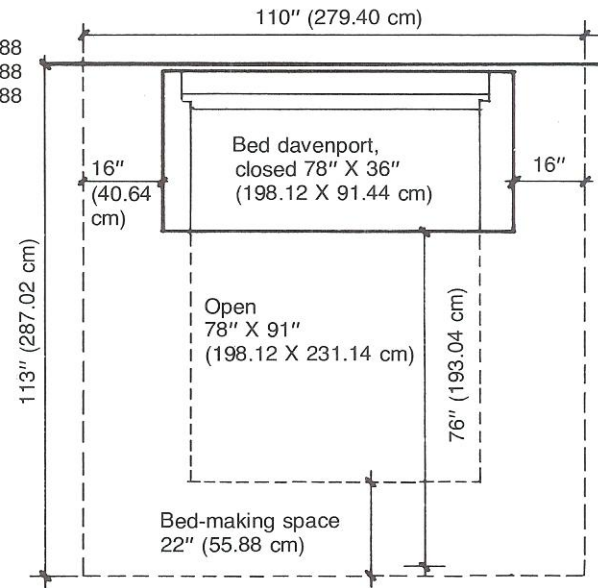
Opened mattress sizes:

	in.	cm
Single:	39 X 72	99.06 X 182.88
Double:	54 X 72	137.16 X 182.88
Queen:	60 X 72	152.40 X 182.88



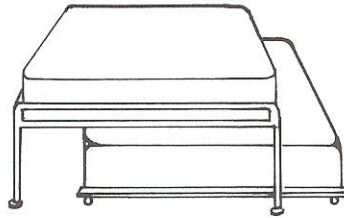
Dimensions:

	in.	cm
P =	55	139.70 single
Q =	72	182.88 double
R =	80	203.20 queen
S =	39	99.06 single
T =	54	137.16 double
U =	60	152.40 queen
V =	88	223.52
W =	72	182.88 mattress
X =	32	81.28
Y =	34	86.36

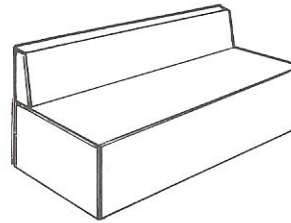




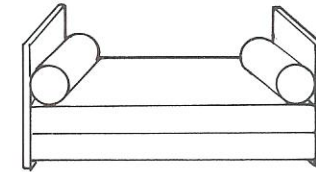
Roll-away



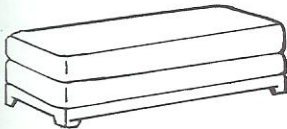
High riser



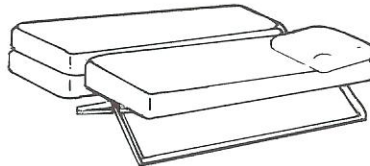
Sofa lounge



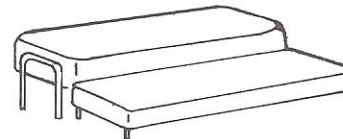
Daybed



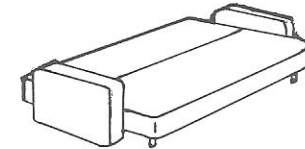
Studio divan



Studio couch



Trundle bed



Push-back sofa

Selected types of convertible bedding as defined in the Federal Standard for Flammability of Mattresses and Mattress pads (FF 4-72):

Roll-away: Portable bed with mattress and frame that folds in half for compact storage.

High riser: One frame of seating height has a mattress without a backrest. Another frame slides out below it with an equal-size

mattress and rises to form a double bed or two single beds.

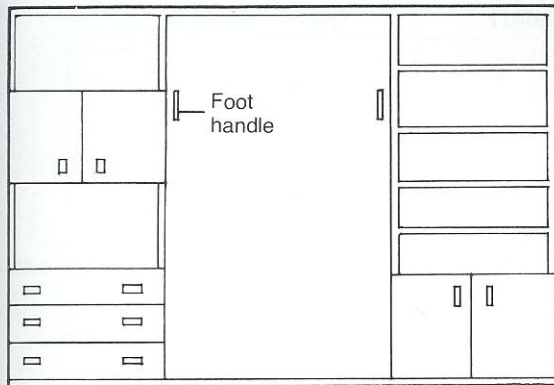
Studio couch: Upholstered seating section on an upholstered foundation may convert to twin beds.

Trundle bed: A low bed rolls under a larger bed and springs up to form a double bed or two single beds as in a high riser.

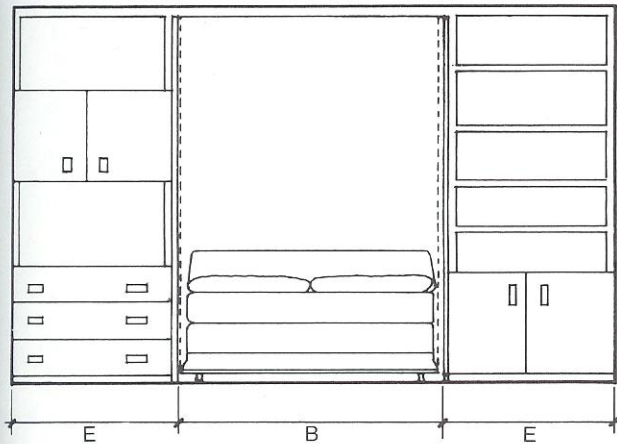
Push-back sofa: When back is pushed, it lowers to form portion of bed.

Wall beds

WALL BEDS



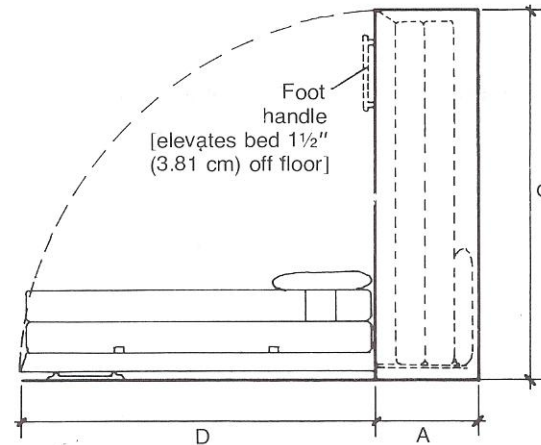
Elevation of closed wall bed



Elevation of opened wall bed

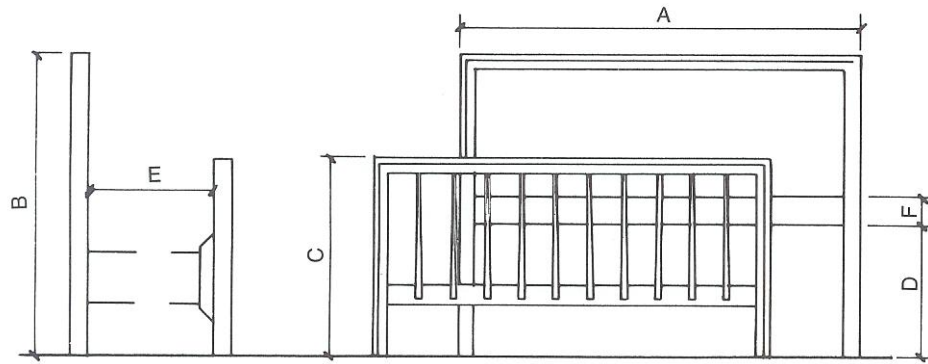
Finished dimensions of recessed openings:

	Single		Double		Queen	
	in.	cm	in.	cm	in.	cm
A = depth	18 to 24	45.72 to 60.96	24		24	
B = width	41	104.14	56	142.24	63	160.02
C = height	88 ³ / ₄	225.43	88	223.52	92 ¹ / ₂	252.73
D = opened bed length	78	198.12	78	198.12	84	213.36
E = side cabinet	30	76.20	30		30	



Elevation and section of bed closed

Bed frames measurement



Elevations of head- and footboards

Standard measurements of bed frames

Dimensions:

- A = headboard widths: 42" to 80" (106.68 to 203.20 cm)
- B = headboard height: 32" (81.28 cm)
- C = footboard: 21" (53.34 cm)
- D = 14" (35.56 cm)
- E = 6'4" (193.04 cm)
- F = 3" (7.62 cm)



Bedroom space requirements

SPACE STANDARDS FOR BEDROOM CONVENIENCE & MAINTENANCE

Dimensions (not to scale):

G = 15'8" (4.77 m)

H = 11'2" (3.60 m)

I = 9'11" to 10'4"
(3.01 to 3.14 m)

J = cleaning space: 48" (121.92 cm)

K = 42" (106.68 cm)

L = space to use dresser: 40" (101.60 cm)

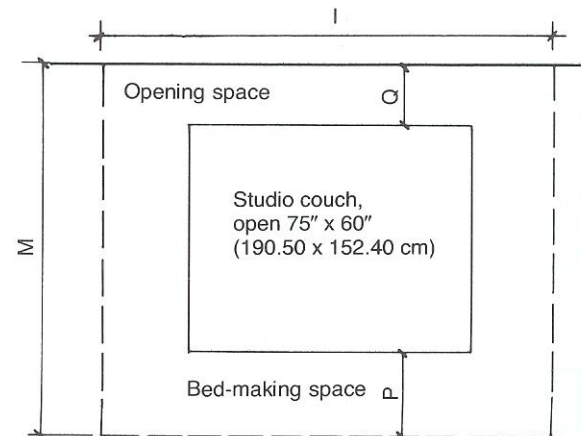
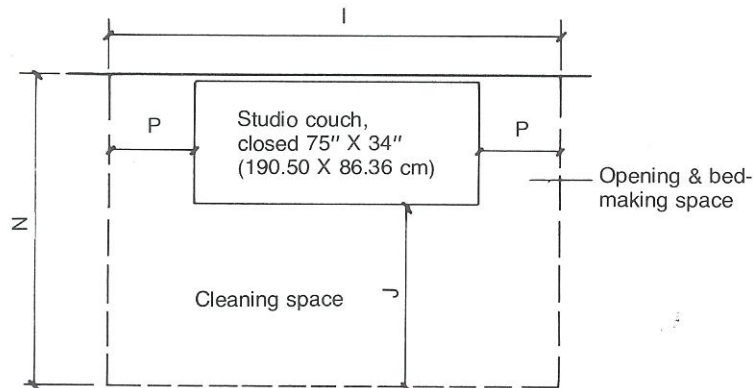
M = 8'2" (2.48 m)

N = 6'10" (2.07 m)

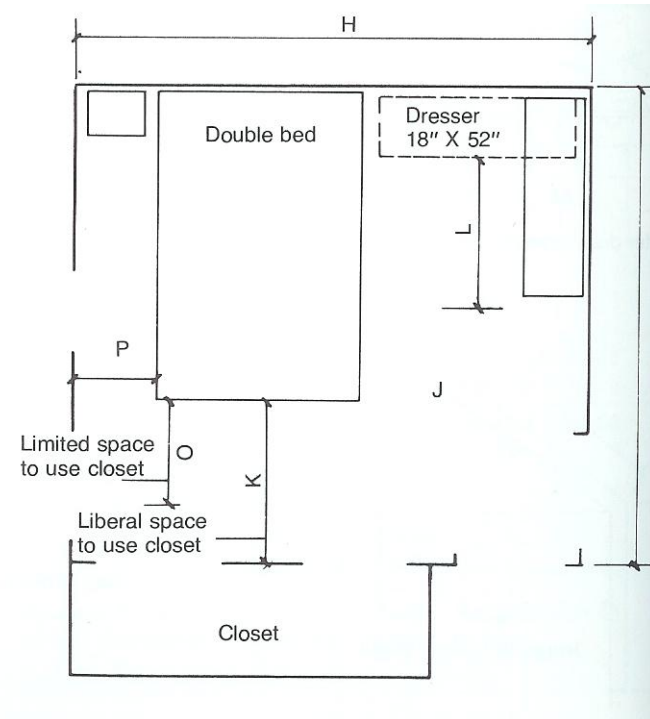
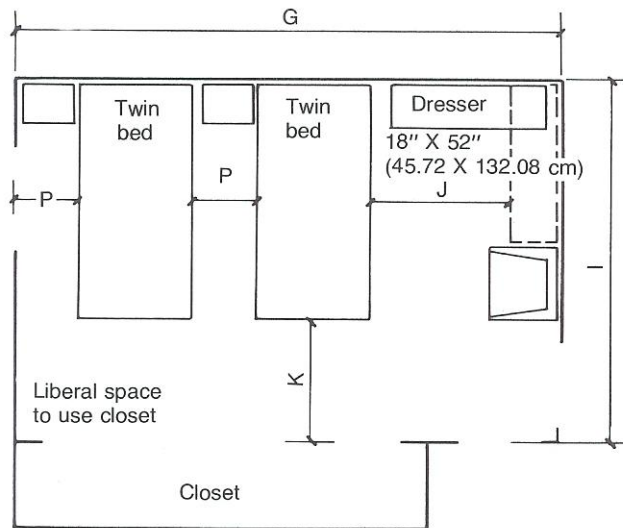
O = 36" (91.44 cm)

P = bed-making space: 22" (55.88 cm)

Q = opening space: 16" (40.64 cm)



Bedroom space requirements



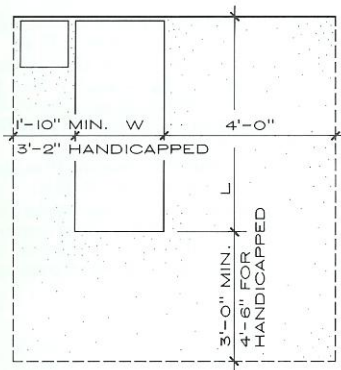
Note: In these drawings "limited space" refers to minimum space needed to remove clothes from the closet. "Liberal space" allows a person room to remove and put on clothing.



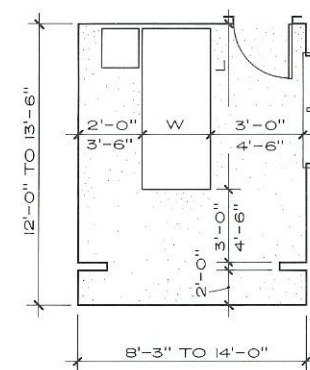
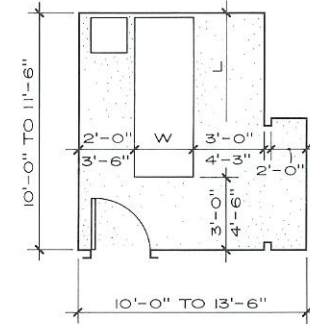
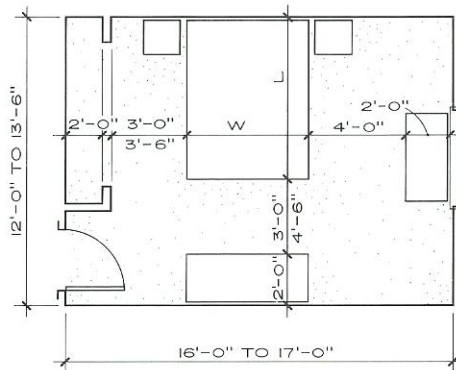
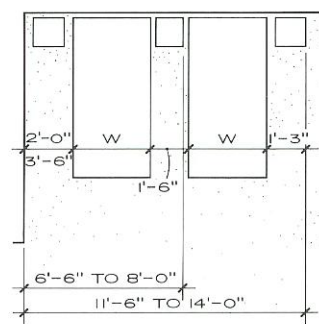
Bedroom space requirements and bed sizes

BED SIZES

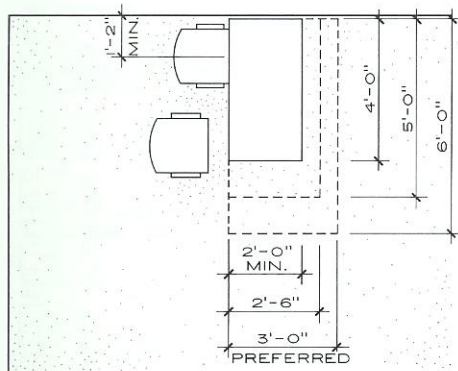
TYPES	W	L
KING	72"	84"
QUEEN	60"	82"
DOUBLE	54"	82"
SINGLE	39"	82"
DAYBED	30"	75"
CRIB	30"	53"



BED CLEARANCES
BEDROOM FURNITURE

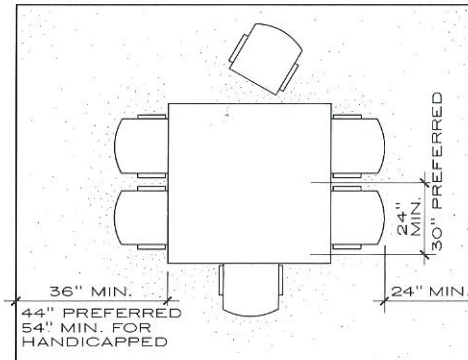


Dining and living room



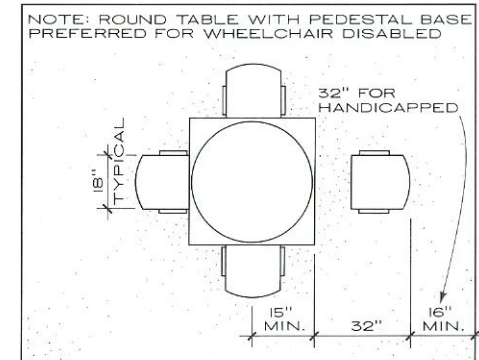
RECTANGULAR TABLES (IN.)

SIZE	SEAT	WHEELCHAIR
24 x 48	4	
30 x 48	4	2
30 x 60	4-6	2-4
36 x 72	4-6	4-6
36 x 84	6-8	6



SQUARE TABLES (IN.)

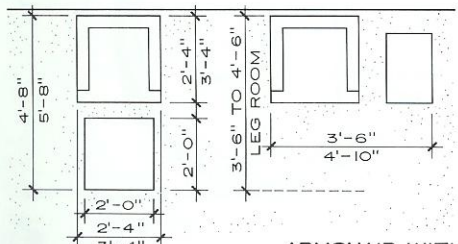
SIZE	SEAT	WHEELCHAIR
30 x 30	2	
36 x 36	2-4	
42 x 42	4	2 (TIGHT)
48 x 48	4-8	2
54 x 54	4-8	4



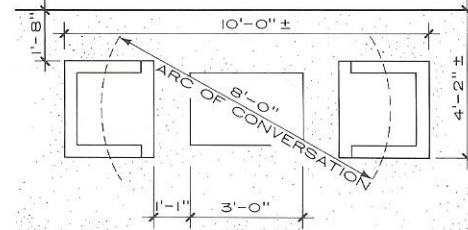
ROUND TABLES (IN.)

SIZE	SEAT	WHEELCHAIR
30	2	
36	2-4	
42	4-5	
48	5-6	2
54	5-6	4

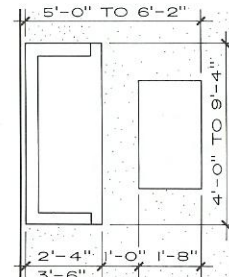
DINING ROOM FURNITURE



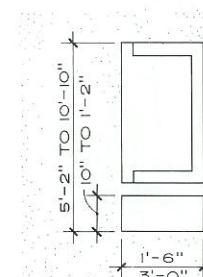
ARMCHAIR WITH OTTOMAN AND END TABLE
LIVING ROOM FURNITURE



ARMCHAIRS WITH COFFEE TABLE



SOFA WITH COFFEE TABLE

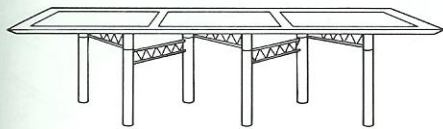


SOFA WITH END TABLE

Table sizes

RECTANGULAR

WIDTH	LENGTH	APPROXIMATE SEATING
5'-0"	20'-0"	20-22
4'-6"	18'-0"	18-20
4'-6"	16'-0"	16-18
4'-6"	14'-0"	14-16
4'-0"	12'-0"	12-14
4'-0"	11'-0"	10-12
4'-0"	10'-0"	10-12
4'-0"	9'-0"	8-10
4'-0"	8'-0"	8-10
3'-6"	9'-0"	8-10
3'-6"	8'-0"	8-10
3'-6"	7'-6"	6-8
3'-6"	7'-0"	6-8
3'-0"	7'-0"	6-8
3'-0"	6'-6"	6-8
2'-6"	5'-6"	4-6
2'-6"	5'-0"	4-6



RECTANGLE 48" X 84", 96"
(EXPANDABLE 48" X 48")
MODULAR UNITS TO 280"
H 29"

ZIPP TABLE
DESIGNER: RODNEY KINSMAN
DAVIS FURNITURE INDUSTRIES, INC.

SQUARE

WIDTH	LENGTH	APPROXIMATE SEATING
5'-0"	5'-0"	8-12
4'-6"	4'-6"	4-8
4'-0"	4'-0"	4-8
3'-6"	3'-6"	4
3'-0"	3'-0"	4

ROUND

DIAMETER	CIRCUM-FERENCE	APPROXIMATE SEATING
8'-0"	25'-1"	10-12
7'-0"	21'-8"	8-10
6'-0"	18'-9"	7-8
5'-0"	15'-7"	6-7
4'-6"	14'-1"	5-6
4'-0"	12'-6"	5-6
3'-6"	11'-0"	4-5



DIA 42"-72"
W 42"-54"
D 72"-144"
H 28 1/2"

SEGMENTED BASE TABLE
DESIGNER: CHARLES EAMES
HERMAN MILLER, INC.

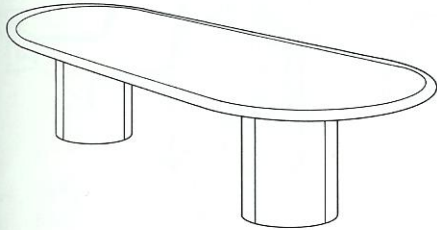
BOAT SHAPED

WIDTH		LENGTH	APPROXIMATE SEATING
CENTER	END		
6'-0"	4'-0"	20'-0"	20-24
5'-6"	4'-0"	18'-0"	18-20
5'-6"	4'-0"	16'-0"	16-18
5'-0"	3'-6"	14'-0"	14-16
4'-6"	3'-6"	12'-0"	12-14
4'-0"	3'-2"	11'-0"	10-12
4'-0"	3'-2"	10'-0"	10-12
3'-6"	3'-0"	9'-0"	8-10
3'-6"	3'-0"	8'-0"	8-10
3'-0"	2'-10"	7'-0"	6-8
3'-0"	2'-10"	6'-0"	6-8



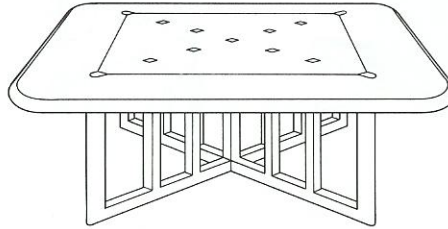
QUARTER CIRCLE: 168" O.D., 48" W
RECTANGULAR: 96" W, 48" D
H 29 1/4"

OMEGA MODULAR TABLES
STENDIG INTERNATIONAL



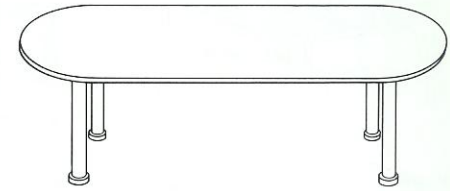
RECTANGULAR OR RADIUS END: 42" X 72" TO 60" X 240"
 ROUND OR SQUARE 42"-72"

CYLINDER BASE TABLES
MUELLER



DIA. 36 1/2"-74", SQUARE 31 1/2"-71"
 RECTANGULAR 44" X 68", 92", 116"
 H 18" OR 28 1/4"

DE MENIL TABLES
DESIGNER: GWATHMEY SIEGEL
ICF, INC.



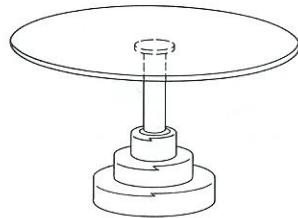
RECTANGULAR OR RADIUS END: 42" X 72" TO 48" X 192"
 ROUND OR SQUARE 42", 48", 54"

THE DONNELLY CONFERENCE TABLE
DESIGNER: PHILIP DONNELLY
JG FURNITURE SYSTEMS, INC.



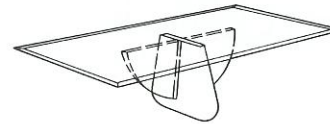
W 78"
 D 48"
 H 28"

KNOLL TABLE DESK
DESIGNER: FLORENCE KNOLL
KNOLL INTERNATIONAL



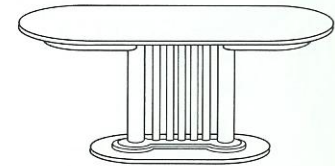
DIA. 24"-57"
 SQUARE 39"-57"
 RECTANGLE 16" X 51", 59", 71"

MENHIR TABLE CONNECTION
DESIGNERS: L. AKERBIS,
G. STOPPINO
ATELIER INTERNATIONAL



W 42", 48"
 D 84", 96"
 H 29"

PINNACLE TABLE
DESIGNER: J. WADE BEAM
BRUETON

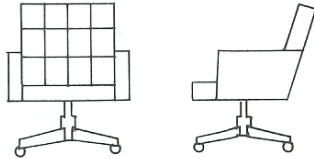


W 55"-75"
 D 39 1/2"
 H 28 1/2"

WASHINGTON OVAL
EXTENSION TABLE
DESIGNER: OTTO BLÜMEL
STENDIG INTERNATIONAL, INC.

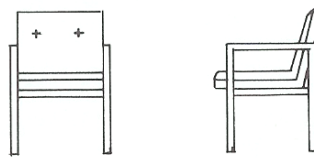
Chair sizes

1



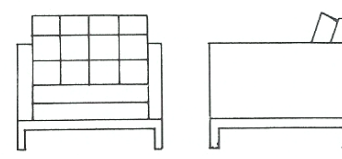
	in.	cm
W = 27		68.58
D = 29		73.66
H = 37		93.98

2



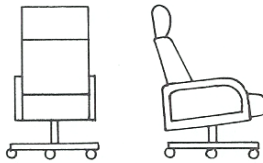
	in.	cm
W = 23		58.42
D = 26		66.04
H = 33		83.82

3



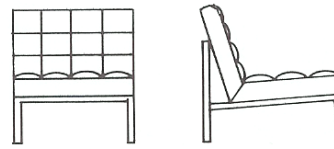
	in.	cm
W = 32		81.28
D = 32		81.28
H = 29		73.66

4



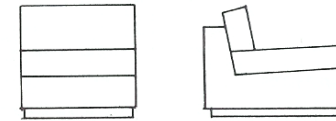
	in.	cm
W = 24		60.96
D = 30		76.20
H = 44		111.76

5



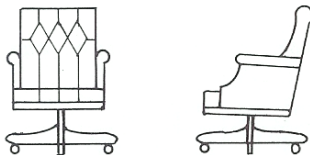
	in.	cm
W = 24		60.96
D = 27		68.58
H = 28		71.12

6



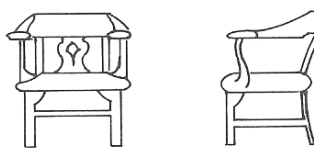
	in.	cm
W = 27½		69.85
D = 34		86.36
H = 29½		74.93

7



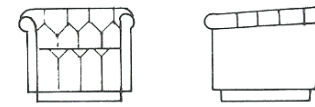
	in.	cm
W = 8½		21.59
D = 33½		82.55
H = 40½		102.87

8



	in.	cm
W = 29		73.66
D = 25		63.50
H = 33		83.82

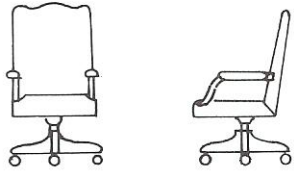
9



	in.	cm
W = 33		83.82
D = 33		83.82
H = 27		68.58



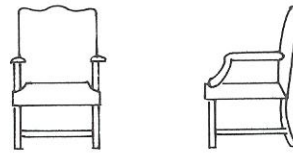
10



W = 25
D = 28
H = 42

63.50
71.12
106.68

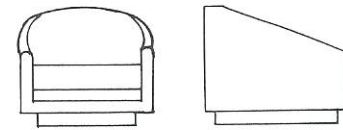
11



W = 25
D = 28
H = 38

63.50
71.12
96.52

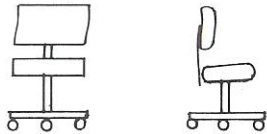
12



W = 30½
D = 27
H = 25

77.47
68.58
63.58

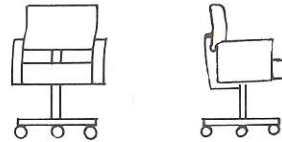
13



W = 20
D = 22
H = 31

50.80
55.88
78.74

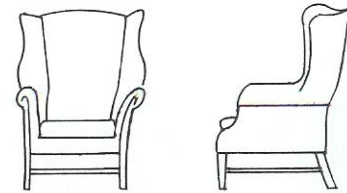
14



W = 24½
D = 25
H = 33

62.23
63.50
83.82

15

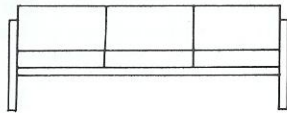


W = 31
D = 33
H = 43

78.74
83.82
109.22

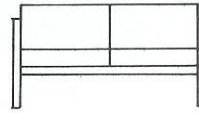
Sofa or love seat and upholstery yardage requirements

16



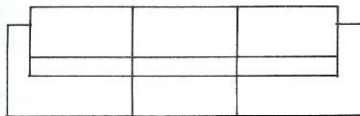
	in.	cm
W =	77	195.58
D =	33	83.82
H =	30	76.20

17



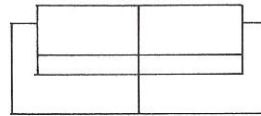
	in.	cm
W =	53	134.62
D =	33	83.82
H =	30	76.20

18



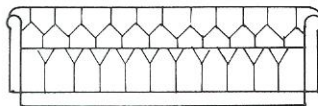
W =	85	215.90
D =	34	86.36
H =	28	71.12

19



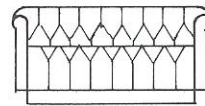
W =	61	154.94
D =	34	86.36
H =	28	71.12

20



W =	90	228.60
D =	33	83.82
H =	27	68.58

21



W =	57	144.78
D =	33	83.82
H =	27	68.58

Upholstery required

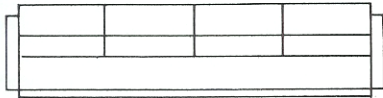
	Fabric		Leather	
	yd	m	ft ²	m ²
1	3¼	2.97	55	5.11
2	2	1.83	36	3.34
3	4	3.66	72	6.69
4	4⅞	4.46	90	8.36
5	2¼	2.06	45	4.18
6	6	5.49	108	10.03
7	4⅓	3.93	77½	7.19
8	1¼	1.14	23	2.14
9	7⅝	6.97	135	12.54
10	2½	2.29	45	4.18
11	2	1.83	36	3.34
12	4	3.66	72	6.69
13	1	0.91	18	1.67
14	3½	3.20	63	5.85
15	5½	5.03	99	9.20
16	9½	8.69	171	15.89
17	6⅞	5.83	117	10.87
18	15	13.72	270	25.08
19	13¾	12.57	252	23.41
20	12⅝	11.54	234	21.74
21	9⅝	8.80	180	16.72
22	22⅓	20.23	396	36.79
23	12¼	11.20	216	20.07
24	8	7.32	144	13.38
25	7	6.40	112	10.41
26	9	8.23	162	15.05
27	7½	6.86	135	12.54

Notes: All yardage is based on 54" (137.16 cm) wide plain fabric.

When furniture platform is to be covered in matching fabric, add the following yardage:

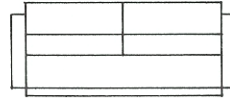
Chair	1¼ (114.30 cm)
Sofa or love seat to 60" (152.40 cm) wide	2¼ (205.74 cm)
Sofa over 60" wide	3⅞ (354.33 cm)

22



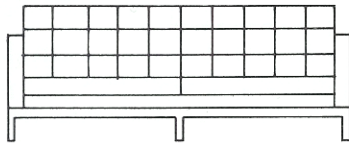
W = 108 274.32
 D = 34 86.36
 H = 29½ 74.93

23



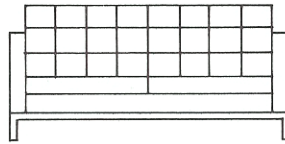
W = 64 162.56
 D = 34 86.36
 H = 29½ 74.93

24



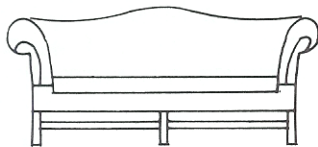
W = 72 182.88
 D = 32 81.28
 H = 29 73.66

25



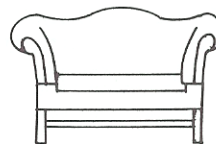
W = 60 152.40
 D = 32 81.28
 H = 29 73.66

26



W = 79 200.66
 D = 35 88.90
 H = 34 86.36

27



W = 60 152.40
 D = 35 88.90
 H = 34 86.36

Upholstery required

	Fabric		Leather	
	yd	m	ft ²	m ²
1	3¼	2.97	55	5.11
2	2	1.83	36	3.34
3	4	3.66	72	6.69
4	4⅞	4.46	90	8.36
5	2¼	2.06	45	4.18
6	6	5.49	108	10.03
7	4⅓	3.93	77⅔	7.19
8	1¼	1.14	23	2.14
9	7⅝	6.97	135	12.54
10	2½	2.29	45	4.18
11	2	1.83	36	3.34
12	4	3.66	72	6.69
13	1	0.91	18	1.67
14	3½	3.20	63	5.85
15	5½	5.03	99	9.20
16	9½	8.69	171	15.89
17	6⅜	5.83	117	10.87
18	15	13.72	270	25.08
19	13¾	12.57	252	23.41
20	12⅝	11.54	234	21.74
21	9⅝	8.80	180	16.72
22	22⅓	20.23	396	36.79
23	12¼	11.20	216	20.07
24	8	7.32	144	13.38
25	7	6.40	112	10.41
26	9	8.23	162	15.05
27	7½	6.86	135	12.54

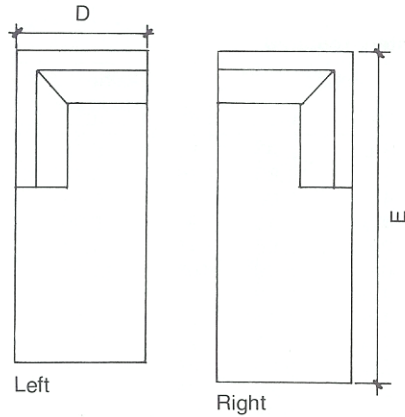
Notes: All yardage is based on 54" (137.16 cm) wide plain fabric.

When furniture platform is to be covered in matching fabric, add the following yardage:

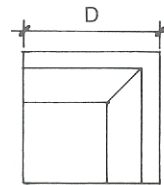
Chair	1¼ (114.30 cm)
Sofa or love seat to 60" (152.40 cm) wide	2¼ (205.74 cm)
Sofa over 60" wide	3⅞ (354.33 cm)

Sectional upholstered furniture

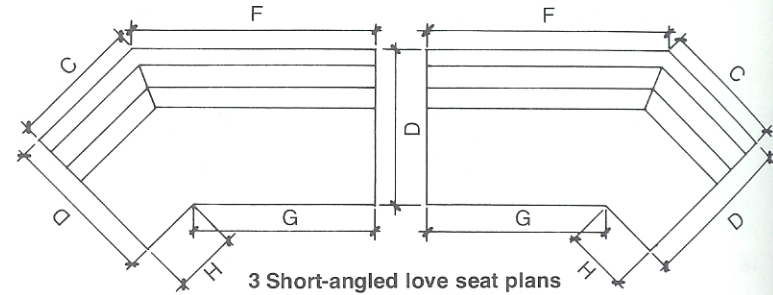
TYPICAL UPHOLSTERED SECTIONALS



1 Chaise lounge plans



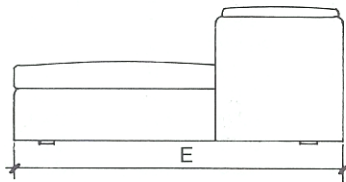
2 Right corner chair plan



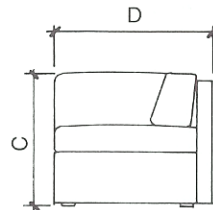
3 Short-angled love seat plans

Dimensions:

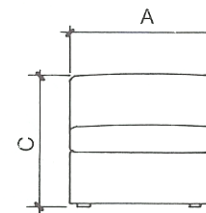
	in.	cm
A	32	81.28
B	17	43.18
C	30	76.20
D	36	91.44
E	85	215.90
F	44½	113.03
G	30½	77.47
H	15	38.10



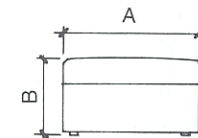
1 Chaise lounge elevation



2 Corner chair elevation

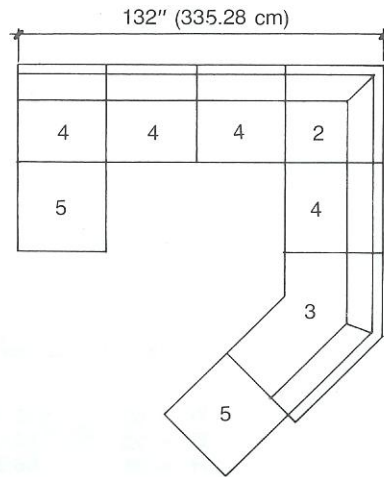
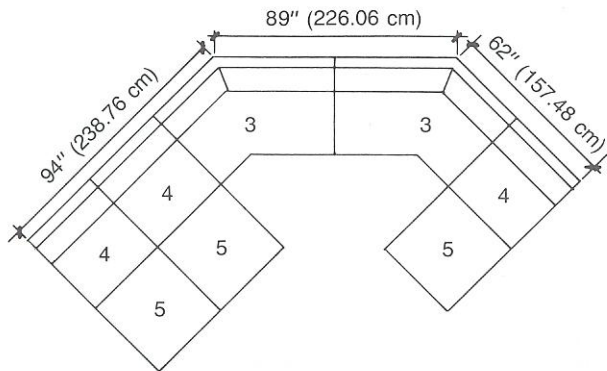
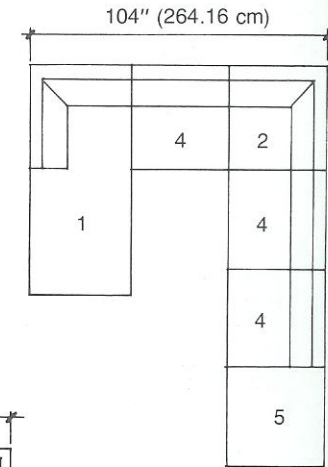
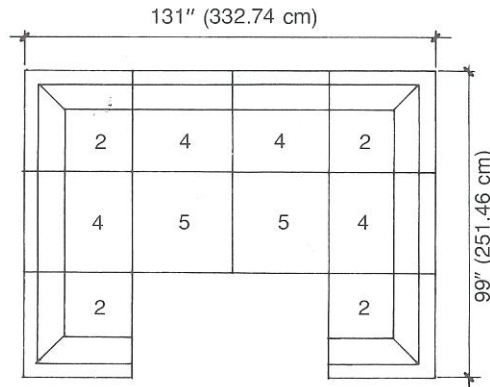
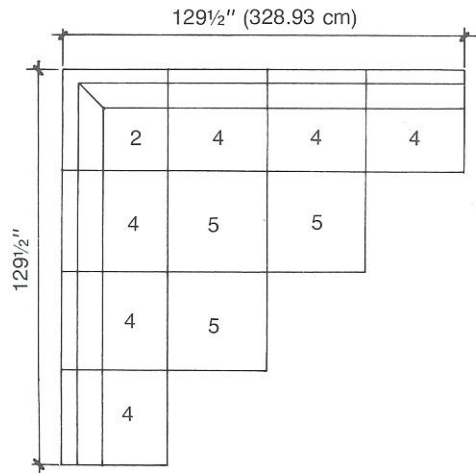


4 Armless chair elevation



5 Ottoman elevation

TYPICAL COMBINATIONS OF SECTIONAL PIECES



Note: When specifying sectional furnishings, be sure to specify arm location—either left or right. The left or right is determined by the viewer facing the front of the seating unit.